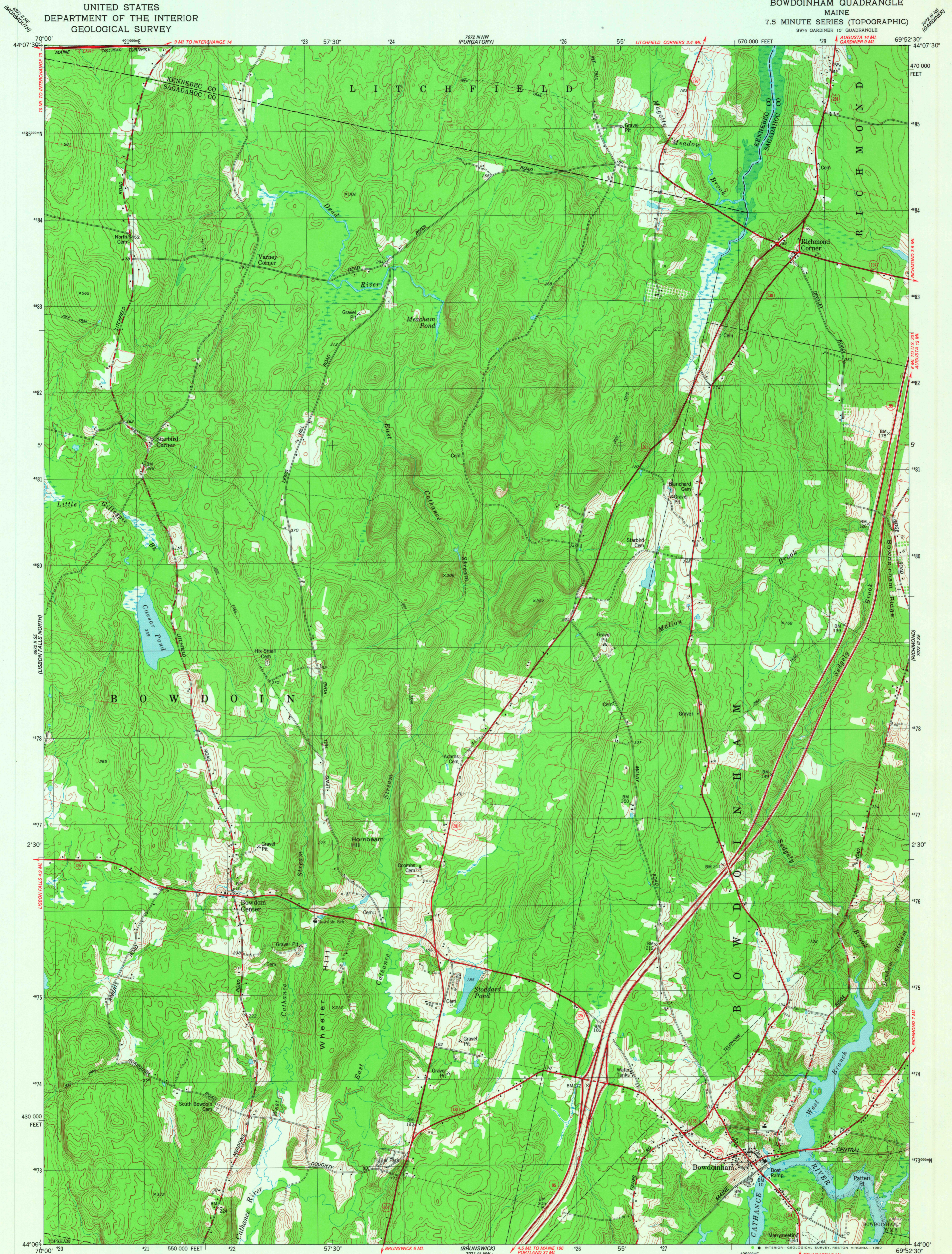
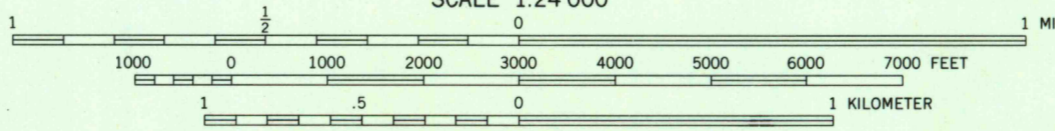
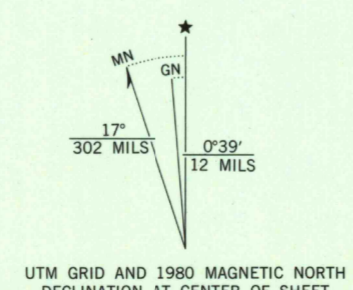


UNITED STATES
DEPARTMENT OF THE INTERIOR
GEOLOGICAL SURVEY

BOWDOINHAM QUADRANGLE
MAINE
7.5 MINUTE SERIES (TOPOGRAPHIC)



Mapped, edited, and published by the Geological Survey
Control by USGS, NOS/NOAA, and Maine Geodetic Survey
Topography by photogrammetric methods from aerial photographs taken 1972. Field checked 1974. Map edited 1980
Selected hydrographic data compiled from NOS chart 13293 (1979). This information is not intended for navigational purposes
Projection and 10,000-foot grid ticks: Maine coordinate system, west zone (transverse Mercator)
1000-meter Universal Transverse Mercator grid, zone 19. 1927 North American Datum
To place on the predicted North American Datum 1983 move the projection lines 4 meters south and 42 meters west as shown by dashed corner ticks
Fine red dashed lines indicate selected fences and field lines where generally visible on aerial photographs. This information is unchecked
There may be private inholdings within the boundaries of the National or State reservations shown on this map



CONTOUR INTERVAL 10 FEET
NATIONAL GEODETIC VERTICAL DATUM OF 1929
DEPTH CURVES AND SOUNDINGS IN FEET—DATUM IS MEAN LOW WATER
THE RELATIONSHIP BETWEEN THE TWO DATUMS IS VARIABLE
SHORELINE SHOWN REPRESENTS THE APPROXIMATE LINE OF MEAN HIGH WATER
THE MEAN RANGE OF TIDE IS APPROXIMATELY 5.7 FEET



ROAD CLASSIFICATION
Primary highway, hard surface ——— Light-duty road, hard or improved surface ———
Secondary highway, hard surface ——— Unimproved road ———
Interstate Route ——— U.S. Route ——— State Route ———

USGS
Historical File
Topographic Division
BOWDOINHAM, MAINE
SW4 GARDINER 19 QUADRANGLE
N4400-6952.5/7.5
1980
DMA 7072 III SW—SERIES V811

OCT 23 1980

2000