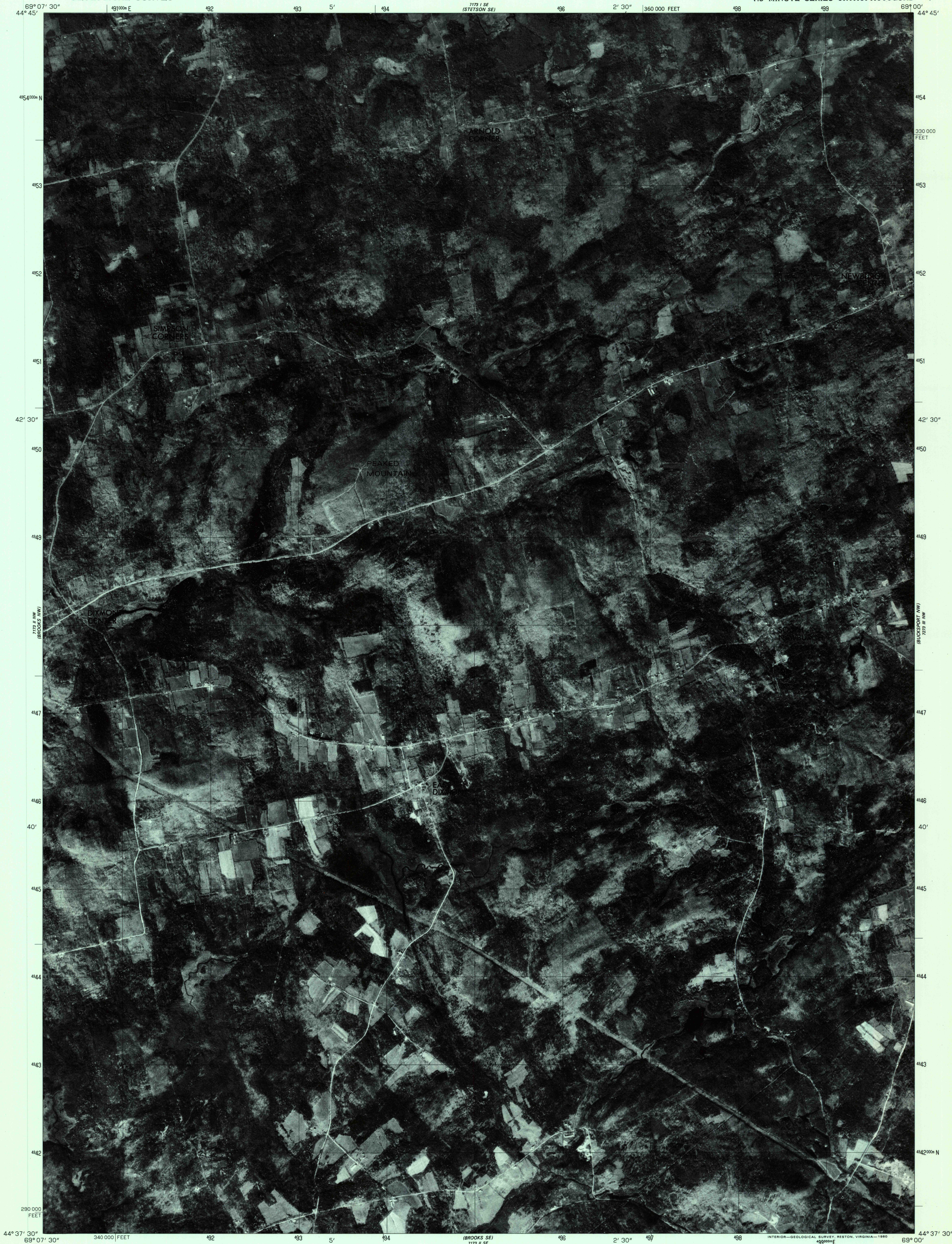


UNITED STATES
DEPARTMENT OF THE INTERIOR
GEOLOGICAL SURVEY

BROOKS NE QUADRANGLE
MAINE
7.5 MINUTE SERIES ORTHOPHOTOQUAD

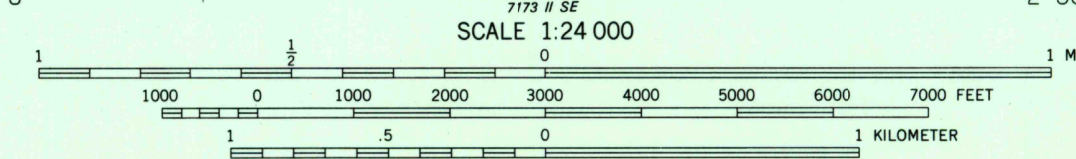
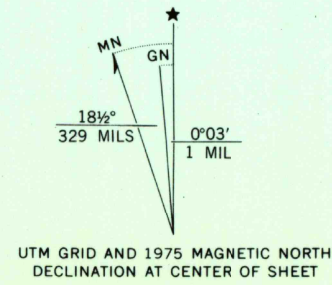


Produced and published by the Geological Survey

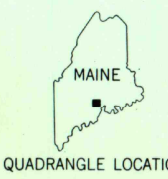
Orthophotograph prepared from 1:80,000-scale aerial photograph taken October 27, 1975

Projection and 10,000-foot grid ticks: Maine coordinate system, east zone (transverse Mercator) 1000-meter Universal Transverse Mercator grid, zone 19. 1927 North American datum

Photomagey rectified by optical scanning which may produce double or mismatched images; use the mean of image positions for map point



PRINCIPAL NUMBERED HIGHWAYS
○ Interstate Route ○ U. S. Route ○ State Route



This quadrangle area also covered by NE quarter of Brooks 1:62,500-scale topographic map

USGS
Historical File
Topographic Division
BROOKS NE, MAINE
14437.5-W6900/7.5
1975

AUG 11 1980
1700

THIS MAP COMPLIES WITH NATIONAL MAP ACCURACY STANDARDS
FOR SALE BY U. S. GEOLOGICAL SURVEY, RESTON, VIRGINIA 22092

DMA 7173 II NE-SERIES V011