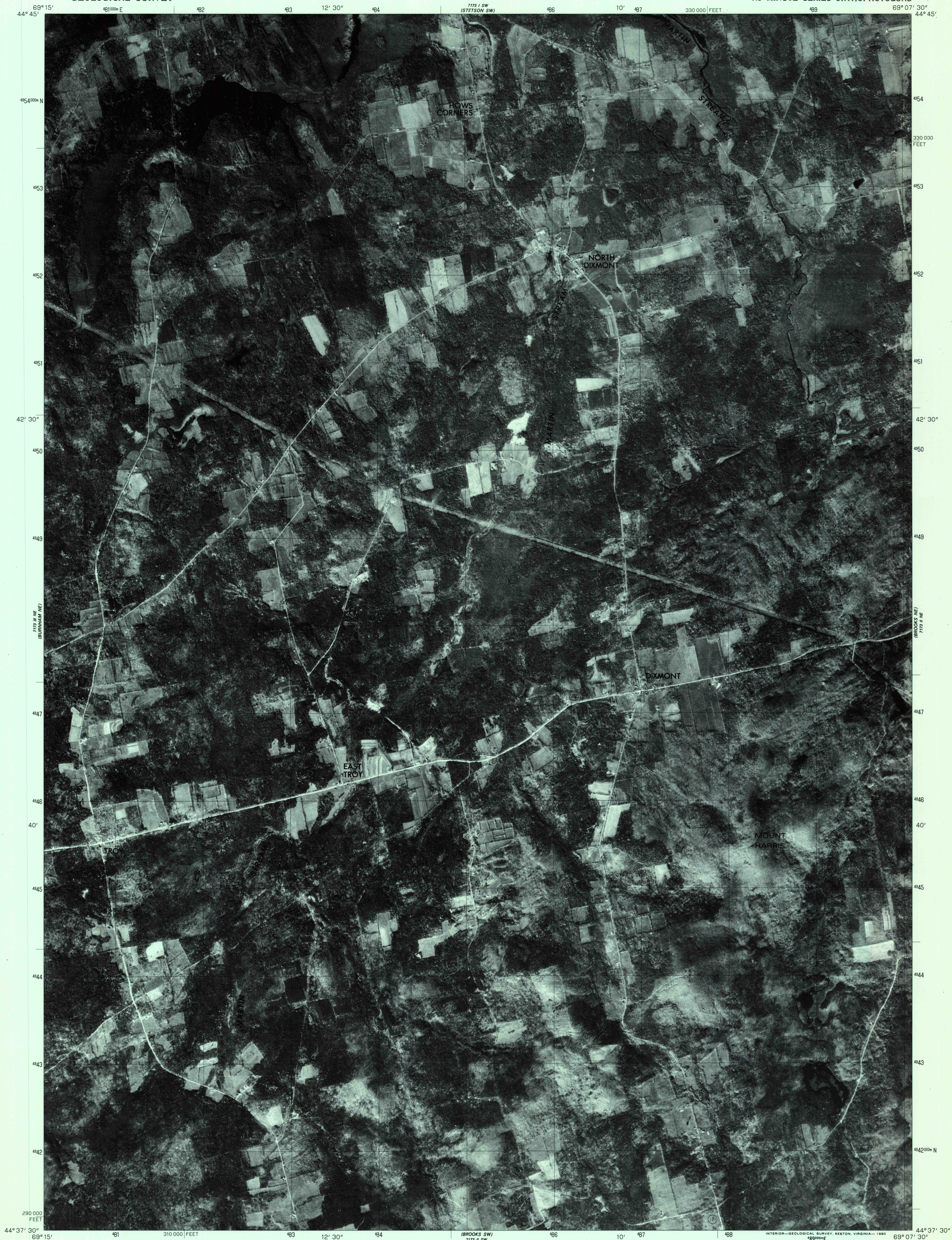


UNITED STATES
DEPARTMENT OF THE INTERIOR
GEOLOGICAL SURVEY

BROOKS NW QUADRANGLE
MAINE
7.5 MINUTE SERIES ORTHOPHOTOQUAD

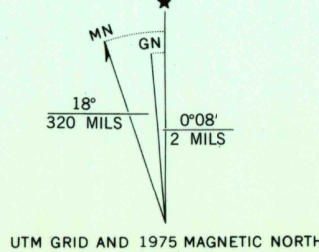


Produced and published by the Geological Survey

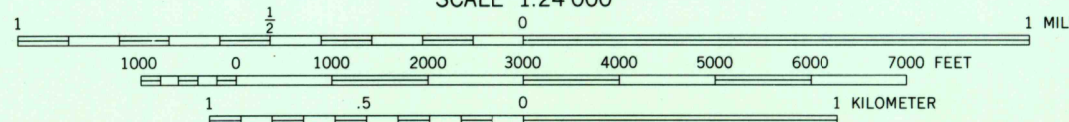
Orthophotograph prepared from 1:80,000-scale aerial photograph taken October 27, 1975

Projection and 10,000-foot grid ticks: Maine coordinate system, east zone (transverse Mercator) 1000-meter Universal Transverse Mercator grid, zone 19. 1927 North American datum

Photomagey rectified by optical scanning which may produce double or mismatched images; use the mean of image positions for map point



UTM GRID AND 1975 MAGNETIC NORTH DECLINATION AT CENTER OF SHEET



THIS MAP COMPLIES WITH NATIONAL MAP ACCURACY STANDARDS
FOR SALE BY U. S. GEOLOGICAL SURVEY, RESTON, VIRGINIA 22092

PRINCIPAL NUMBERED HIGHWAYS
Interstate Route U. S. Route State Route



QUADRANGLE LOCATION

This quadrangle area also covered by NW quarter of Brooks 1:62,500-scale topographic map

USGS
Historical File
Topographic Division

BROOKS NW, MAINE
N4437.5-W6907.5/7.5

1975

DMA 7173 II NW-SERIES V011

AUG 11 1980
1700