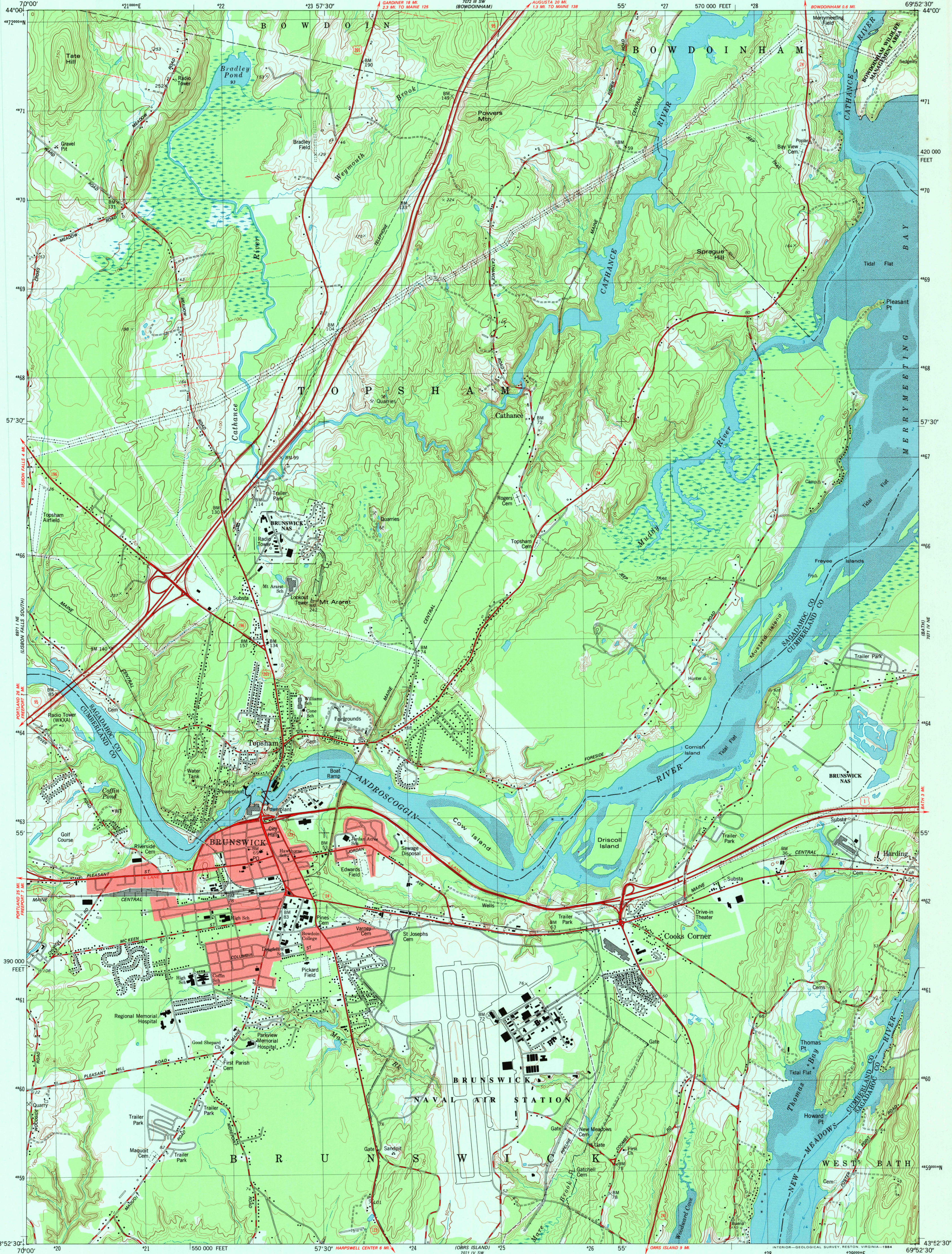
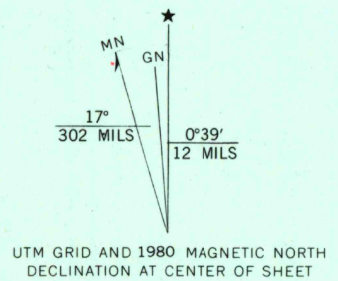


UNITED STATES
DEPARTMENT OF THE INTERIOR
GEOLOGICAL SURVEY

BRUNSWICK QUADRANGLE
MAINE
7.5 MINUTE SERIES (TOPOGRAPHIC)
NW/4 BATH 15' QUADRANGLE



Mapped, edited, and published by the Geological Survey
Control by USGS, NOS/NOAA, and Maine Geodetic Survey
Topography by photogrammetric methods from aerial photographs
taken 1972. Field checked 1974. Map edited 1980
Selected hydrographic data compiled from NOS charts
13290 (1979) and 13293 (1979). This information is not
intended for navigation purposes
Projection and 10,000-foot grid ticks: Maine coordinate
system, west zone (transverse Mercator)
1000-meter Universal Transverse Mercator grid, zone 19
1927 North American Datum
To place on the predicted North American Datum 1983
move the projection lines 4 meters south and
42 meters west as shown by dashed corner ticks
Fine red dashed lines indicate selected fence and field lines where
generally visible on aerial photographs. This information is unchecked
Red tint indicates areas in which only landmark buildings are shown
There may be private inholdings within the boundaries of
the National or State reservations shown on this map



SCALE 1:24 000
CONTOUR INTERVAL 10 FEET
NATIONAL GEODETIC VERTICAL DATUM OF 1929
DEPTH CURVES AND SOUNDINGS IN FEET—DATUM IS MEAN LOW WATER
THE RELATIONSHIP BETWEEN THE TWO DATUMS IS VARIABLE
SHORELINE SHOWN REPRESENTS THE APPROXIMATE LINE OF MEAN HIGH WATER
THE MEAN RANGE OF TIDE IS APPROXIMATELY 4.3 FEET
THIS MAP COMPLIES WITH NATIONAL MAP ACCURACY STANDARDS
FOR SALE BY U.S. GEOLOGICAL SURVEY, RESTON, VIRGINIA 22092
A FOLDER DESCRIBING TOPOGRAPHIC MAPS AND SYMBOLS IS AVAILABLE ON REQUEST



ROAD CLASSIFICATION
Primary highway, hard surface —————
Secondary highway, hard surface —————
Unimproved road —————
Interstate Route —————
U.S. Route —————
State Route —————

BRUNSWICK, MAINE
NW/4 BATH 15' QUADRANGLE
N4352.5—W6952.5/7.5

1980
DMA 7071 IV NW—SERIES V811

USGS NW/4 HISTORICAL
MAP ARCHIVES
JUL 3 1 1998
REC'D FILE COPY

ISBN 0-607-23736-4
9 780607 237362