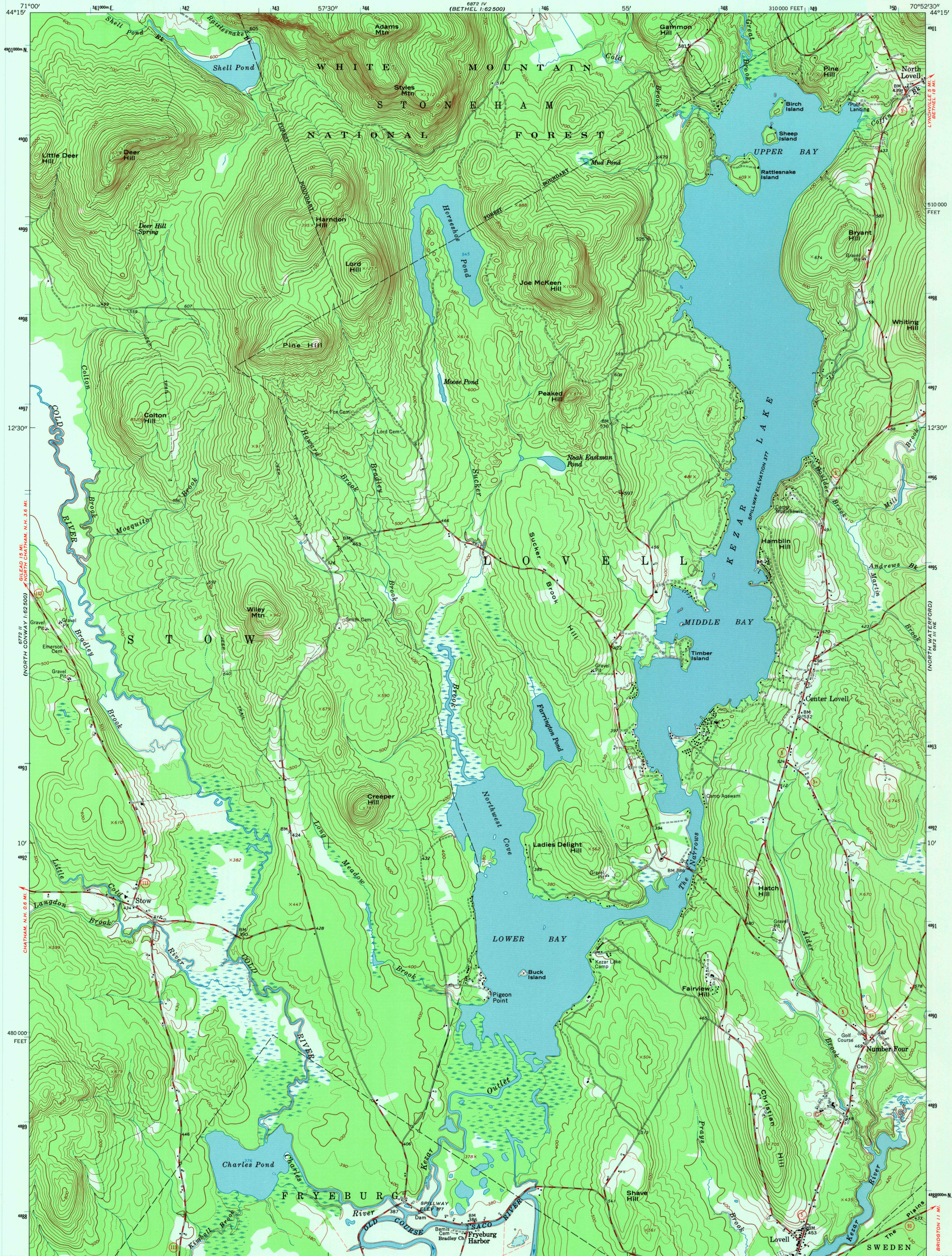


UNITED STATES  
DEPARTMENT OF THE INTERIOR  
GEOLOGICAL SURVEY

CENTER LOVELL QUADRANGLE  
MAINE-OXFORD CO.  
7.5 MINUTE SERIES (TOPOGRAPHIC)  
NW/4 FRYEBURG 15' QUADRANGLE

6872 IV (BETHEL 1:62,500)  
6872 V (BETHEL 1:62,500)



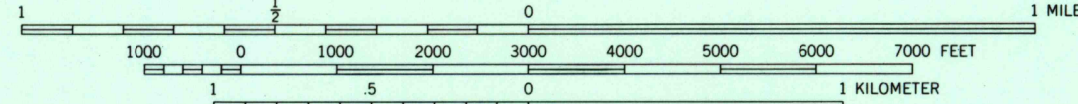
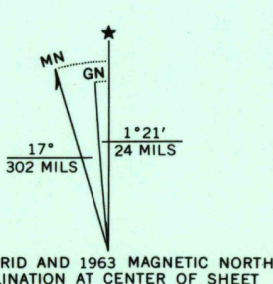
Mapped, edited, and published by the Geological Survey

Control by USGS and USC&GS

Topography by photogrammetric methods from aerial photographs taken 1961. Field checked 1963

Polyconic projection. 1927 North American datum  
10,000-foot grid based on Maine coordinate system, west zone  
1000-meter Universal Transverse Mercator grid ticks,  
zone 19, shown in blue

Fine red dashed lines indicate selected fence and field lines where  
generally visible on aerial photographs. This information is unchecked



CONTOUR INTERVAL 20 FEET  
DOTTED LINES REPRESENT 10-FOOT CONTOURS  
DATUM IS MEAN SEA LEVEL



ROAD CLASSIFICATION  
Medium-duty ——— Light-duty ———  
Unimproved dirt ———  
State Route

CENTER LOVELL, MAINE  
NW/4 FRYEBURG 15' QUADRANGLE  
N4407.5-W7052.5/7.5

1963

AMS 6872 III NW-SERIES V811

THIS MAP COMPLIES WITH NATIONAL MAP ACCURACY STANDARDS  
FOR SALE BY U.S. GEOLOGICAL SURVEY  
DENVER, COLORADO 80225, OR RESTON, VIRGINIA 22092  
A FOLDER DESCRIBING TOPOGRAPHIC MAPS AND SYMBOLS IS AVAILABLE ON REQUEST

USGS AND HISTORICAL  
MAP ARCHIVES  
DEC 1 1995  
REC'D FILE COPY

