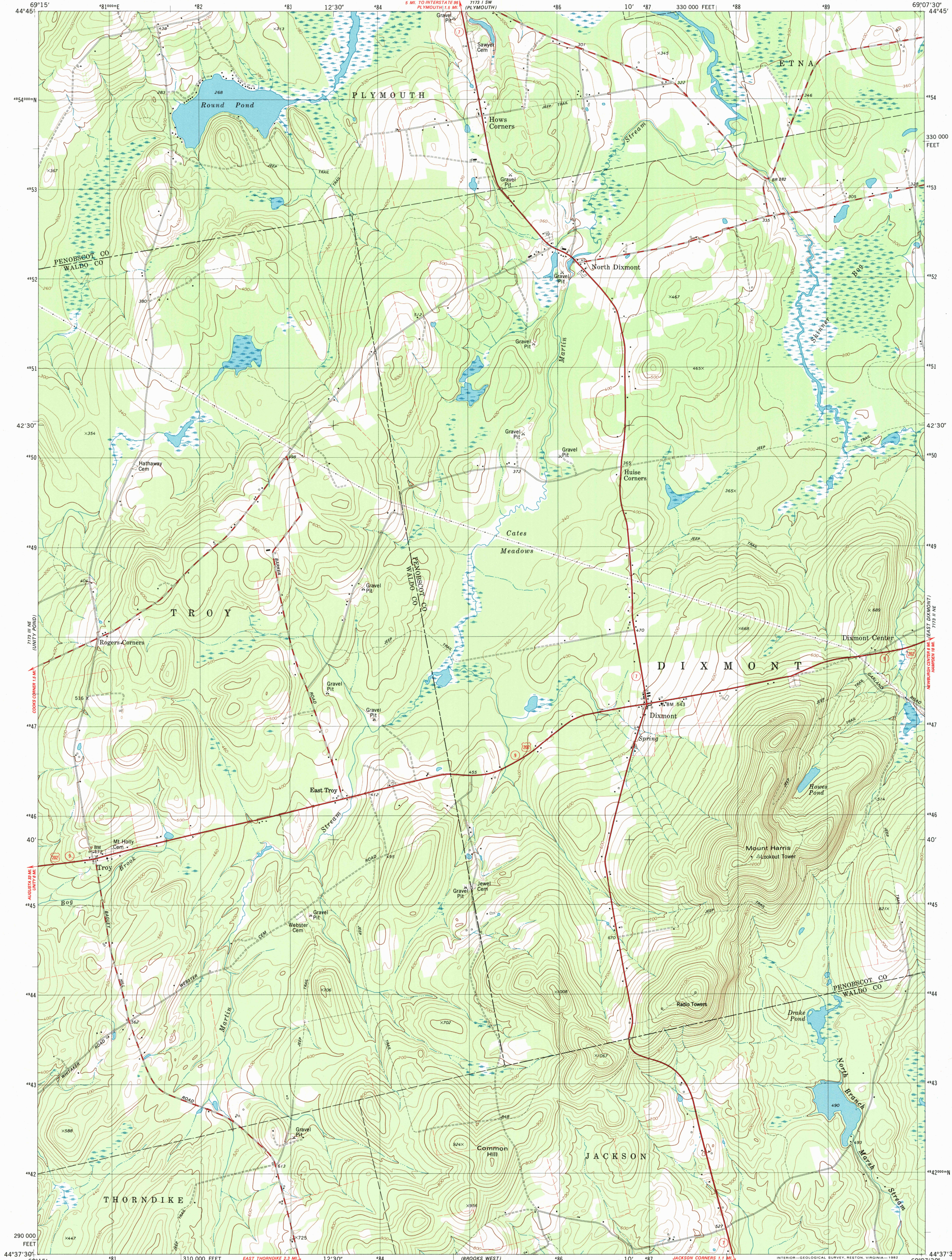


UNITED STATES  
DEPARTMENT OF THE INTERIOR  
GEOLOGICAL SURVEY

DIXMONT QUADRANGLE  
MAINE  
7.5 MINUTE SERIES (TOPOGRAPHIC)  
NW/4 BROOKS 15' QUADRANGLE



Mapped, edited, and published by the Geological Survey

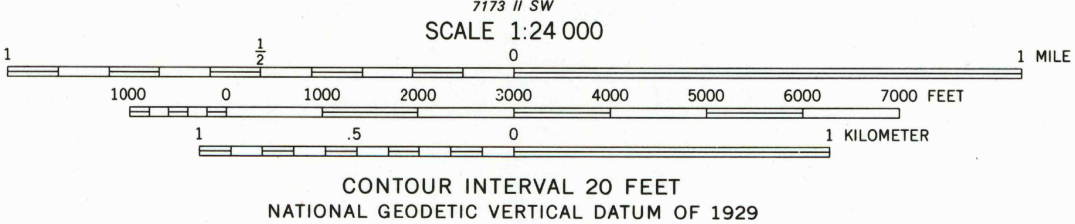
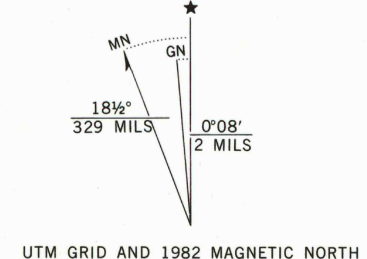
Control by USGS and NOS/NOAA  
Topography by photogrammetric methods from aerial photographs  
taken 1976. Field checked 1979. Map edited 1982

Projection and 10,000-foot grid ticks: Maine coordinate  
system, east zone (transverse Mercator)

1000-meter Universal Transverse Mercator grid, zone 19  
1927 North American Datum

To place on the predicted North American Datum 1983  
move the projection lines 3 meters south and  
43 meters west as shown by dashed corner ticks

Fine red dashed lines indicate selected fence and field lines where  
generally visible on aerial photographs. This information is unchecked



ROAD CLASSIFICATION	
Primary highway, hard surface	Light-duty road, hard or improved surface
Secondary highway, hard surface	Unimproved road
Interstate Route	U. S. Route
	State Route

DIXMONT, MAINE  
NW/4 BROOKS 15' QUADRANGLE  
N4437.5-W6907.5/7.5

1982

DMA 7173 II NW-SERIES V811

