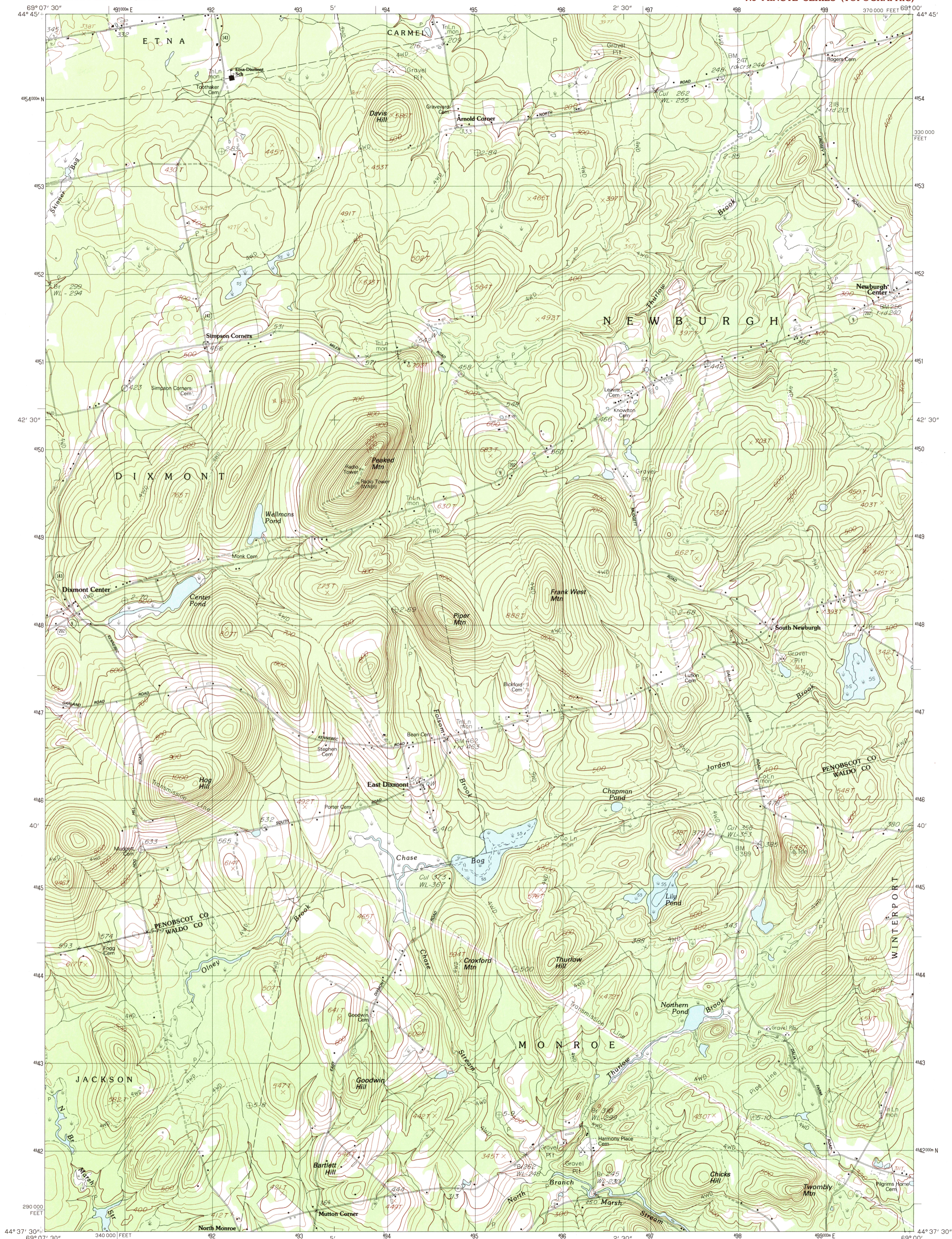


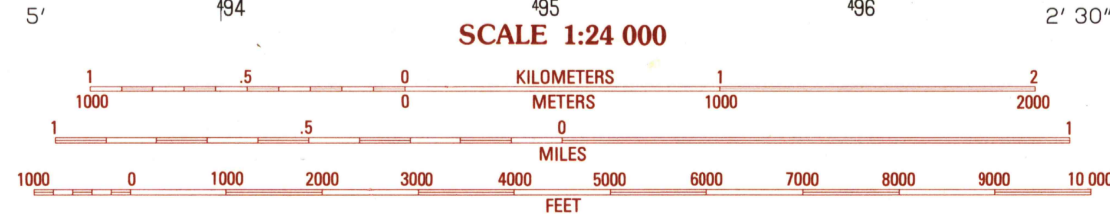
UNITED STATES  
DEPARTMENT OF THE INTERIOR  
GEOLOGICAL SURVEY

EAST DIXMONT QUADRANGLE  
MAINE  
7.5 MINUTE SERIES (TOPOGRAPHIC)



PRODUCED BY THE UNITED STATES GEOLOGICAL SURVEY  
CONTROL BY: USGS AND NOS/NOAA  
COMPILED FROM AERIAL PHOTOGRAPHS TAKEN: 1976 AND 1977  
FIELD CHECKED: 1979 MAP EDITED: 1982  
PROJECTION: TRANSVERSE MERCATOR  
GRID: 1000-METER UNIVERSAL TRANSVERSE MERCATOR ..... ZONE 19  
10,000-FOOT STATE GRID TICKS ..... MAINE EAST ZONE  
UTM GRID DECLINATION: 0°03' WEST  
1982 MAGNETIC NORTH DECLINATION: 18°30' WEST  
VERTICAL DATUM: NATIONAL GEODETIC DATUM OF 1929  
HORIZONTAL DATUM: 1927 NORTH AMERICAN DATUM  
To place on the predicted North American Datum of 1983, move  
the projection lines as shown by dashed corner ticks  
(3 meters south and 44 meters west)  
There may be private inholdings within the boundaries of any  
Federal and State Reservations shown on this map

**PROVISIONAL MAP**  
Produced from original  
manuscript drawings. Infor-  
mation shown as of date of  
field check



THIS MAP COMPLIES WITH NATIONAL MAP ACCURACY STANDARDS  
FOR SALE BY U.S. GEOLOGICAL SURVEY, RESTON, VIRGINIA 22092



1	2	3	1 Plymouth
			2 Carmel
			3 Hermon
4		5	4 Dixmont
			5 Snow Mountain
			6 Brooks West
6	7	8	7 Brooks East
			8 Mt. Waldo

ADJOINING 7.5' QUADRANGLE NAMES

ROAD LEGEND

Improved Road .....  
Unimproved Road .....  
Trail .....  
Interstate Route ..... U.S. Route ..... State Route .....

**EAST DIXMONT, MAINE**  
PROVISIONAL EDITION 1982

44069-F1-TF-024

FEB 20 1983

1900