

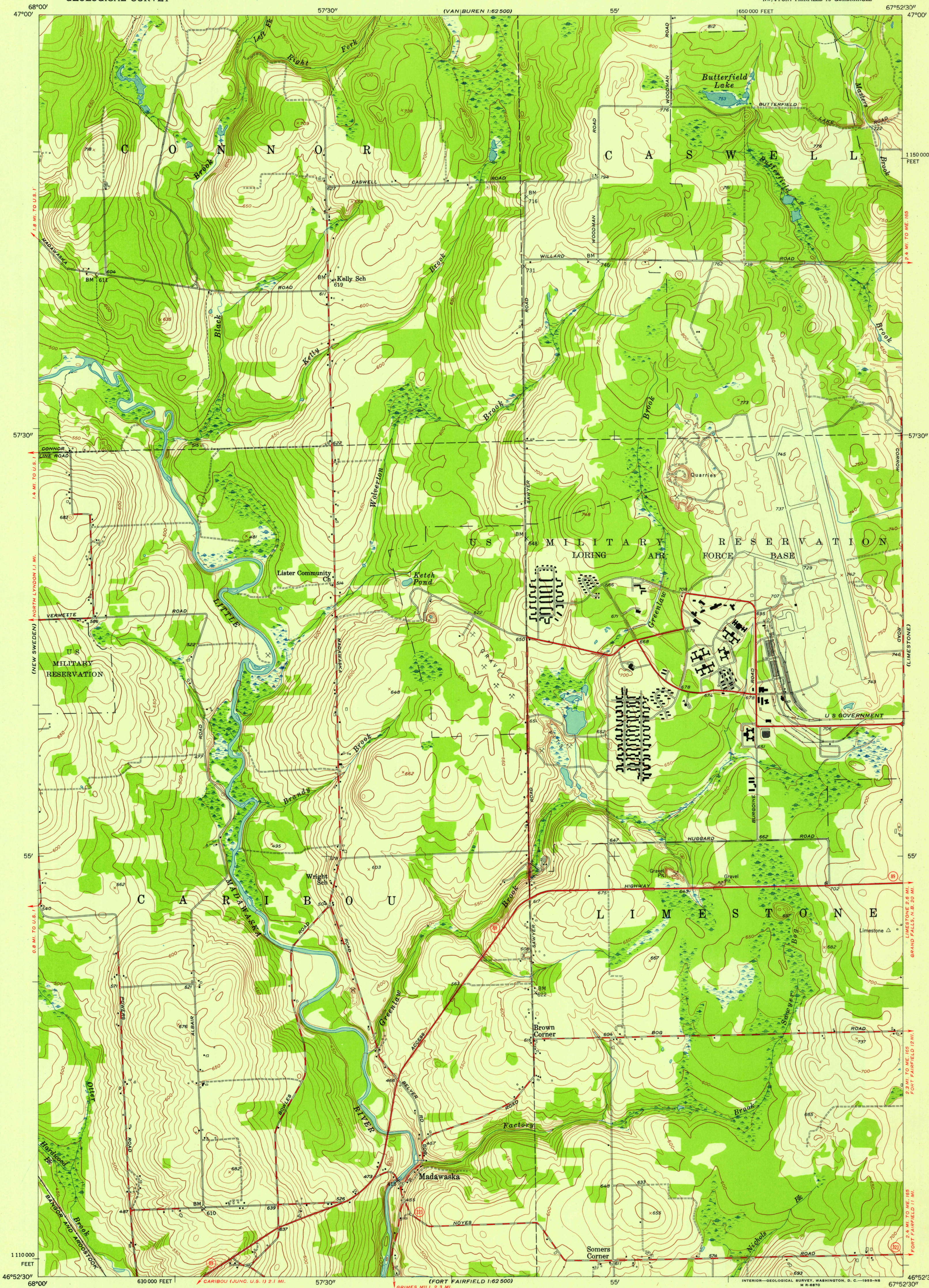
(STOCKHOLM
1:62,500)

UNITED STATES
DEPARTMENT OF THE INTERIOR
GEOLOGICAL SURVEY

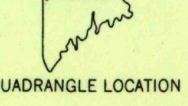
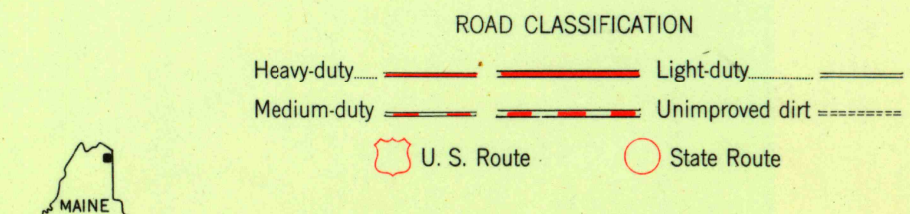
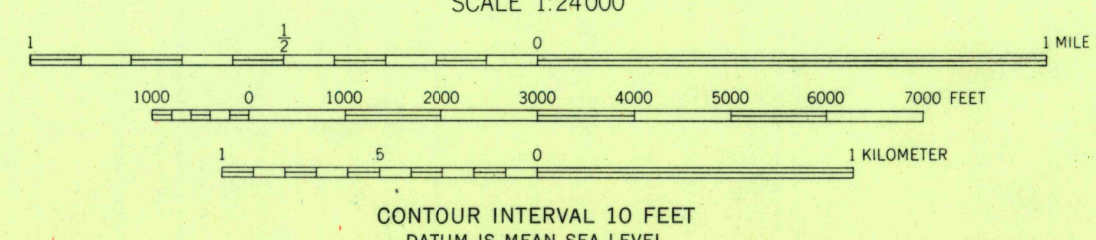
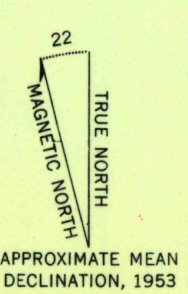
FORT FAIRFIELD NW QUADRANGLE
MAINE—AROOSTOOK CO.
7.5 MINUTE SERIES (TOPOGRAPHIC)
NW/4 FORT FAIRFIELD 15' QUADRANGLE

(VAN BUREN
1:62,500)

U.S.G.S.
FILE COPY
TOPOGRAPHIC DIVISION



Mapped, edited, and published by the Geological Survey
Control by USGS and USC&GS
Topography from aerial photographs by stereoplanigraph
Aerial photographs taken 1952. Field check 1953
Polyconic projection. 1927 North American datum
10,000-foot grid based on Maine coordinate system,
east zone



FORT FAIRFIELD NW, ME.
NW/4 FORT FAIRFIELD 15' QUADRANGLE
N 4652.5—W 6752.5/7.5

THIS MAP COMPLIES WITH NATIONAL MAP ACCURACY STANDARDS
FOR SALE BY U. S. GEOLOGICAL SURVEY, WASHINGTON 25, D. C.
A FOLDER DESCRIBING TOPOGRAPHIC MAPS AND SYMBOLS IS AVAILABLE ON REQUEST

1953

USGS
Historical File
Topographic Division

U.S.G.S.
FILE COPY
TOPOGRAPHIC DIVISION

MAY 25 1955

3170