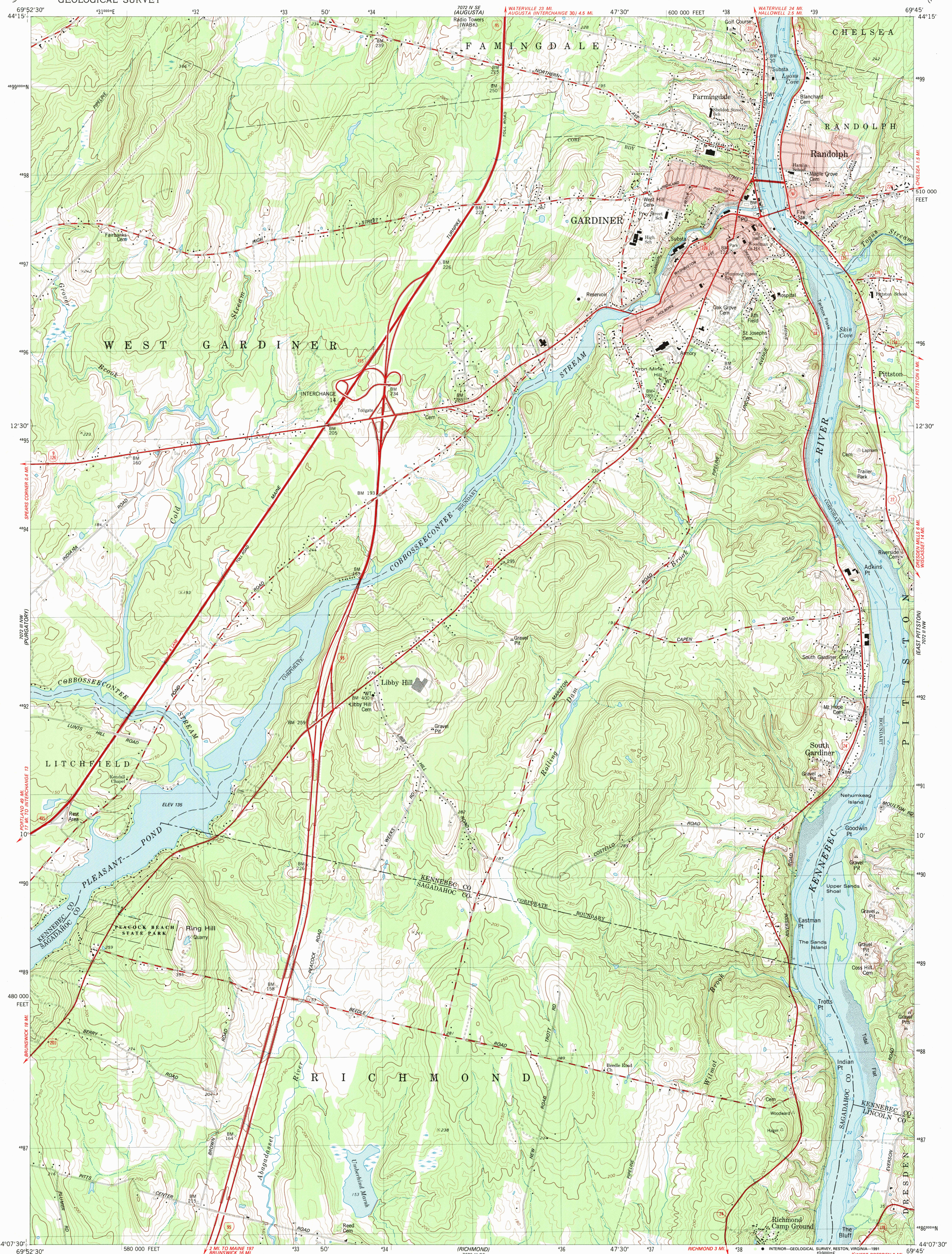
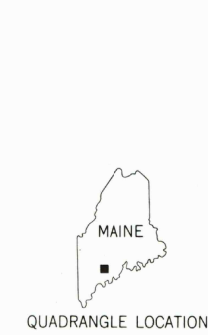
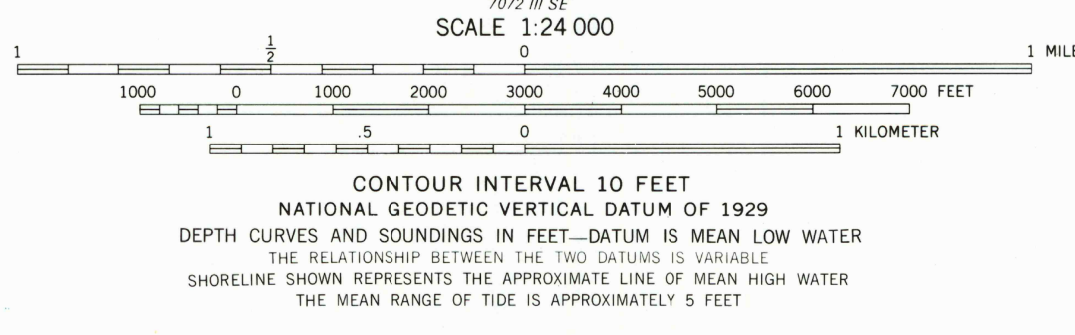
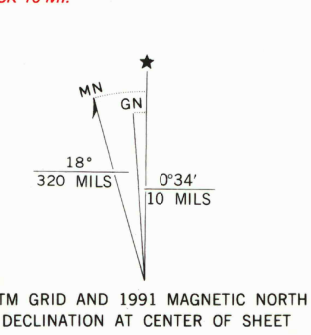


UNITED STATES  
DEPARTMENT OF THE INTERIOR  
GEOLOGICAL SURVEY

GARDINER QUADRANGLE  
MAINE  
7.5 MINUTE SERIES (TOPOGRAPHIC)



Mapped, edited, and published by the Geological Survey  
Control by USGS, NOS/NOAA, MDOT, and Maine Geodetic Survey  
Topography by photogrammetric methods from aerial photographs  
taken 1973. Field checked 1974. Map edited 1980  
Selected hydrographic data compiled from NOS chart 13298 (1978)  
This information is not intended for navigational purposes  
Projection and 10,000-foot grid ticks: Maine coordinate  
system, west zone (transverse Mercator)  
1000-meter Universal Transverse Mercator grid, zone 19  
1927 North American Datum  
To place on the predicted North American Datum 1983  
move the projection lines 4 meters south and  
42 meters west as shown by dashed corner ticks  
Fine red dashed lines indicate selected fence and field lines where  
generally visible on aerial photographs. This information is unchecked  
Red tint indicates areas in which only landmark buildings are shown  
There may be private inholdings within the boundaries of  
the National or State reservations shown on this map



ROAD CLASSIFICATION  
Primary highway, hard surface  
Secondary highway, hard surface  
Light-duty road, hard or improved surface  
Unimproved road  
Interstate Route  
U. S. Route  
State Route

GARDINER, MAINE  
44069-B7-TF-024

1980  
REVISED 1991  
DMA 7072 III NE-SERIES V81.1

THIS MAP COMPLIES WITH NATIONAL MAP ACCURACY STANDARDS  
FOR SALE BY U. S. GEOLOGICAL SURVEY  
DENVER, COLORADO 80225, OR RESTON, VIRGINIA 22092  
A FOLDER DESCRIBING TOPOGRAPHIC MAPS AND SYMBOLS IS AVAILABLE ON REQUEST

Revisions compiled in cooperation with  
state of Maine agencies from aerial  
photographs taken 1988 and other sources.  
Contours not revised. This information  
not field checked. Map edited 1991