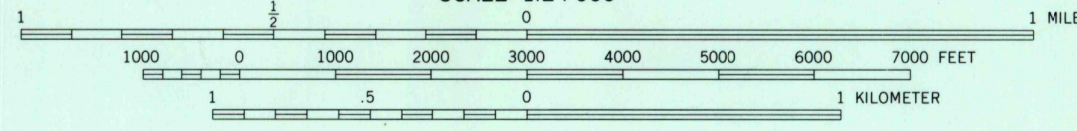
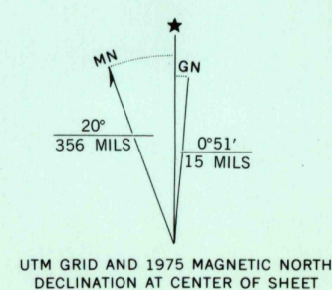


UNITED STATES  
DEPARTMENT OF THE INTERIOR  
GEOLOGICAL SURVEY

HOULTON NE QUADRANGLE  
MAINE-NEW BRUNSWICK  
7.5 MINUTE SERIES ORTHOPHOTOQUAD



Produced and published by the Geological Survey  
Orthophotograph prepared from 1:80,000-scale aerial photograph taken May 25, 1975  
Projection and 10,000-foot grid ticks: Maine coordinate system, east zone (transverse Mercator) 1000-meter Universal Transverse Mercator grid, zone 19. 1927 North American datum  
Photoimagery rectified by optical scanning which may produce double or mismatched images; use the mean of image positions for map point



THIS MAP COMPLIES WITH NATIONAL MAP ACCURACY STANDARDS FOR SALE BY U. S. GEOLOGICAL SURVEY, RESTON, VIRGINIA 22092



PRINCIPAL NUMBERED HIGHWAYS  
Interstate Route U. S. Route State Route

This quadrangle area also covered by NE quarter of Houlton 1:62,500-scale topographic map

HOULTON NE, MAINE-N. B.  
N4607.5-W6745/7.5

1975

DMA 7476 III NE-SERIES V011

USGS  
Historical File  
National Mapping Division  
MAR 19 1981  
908