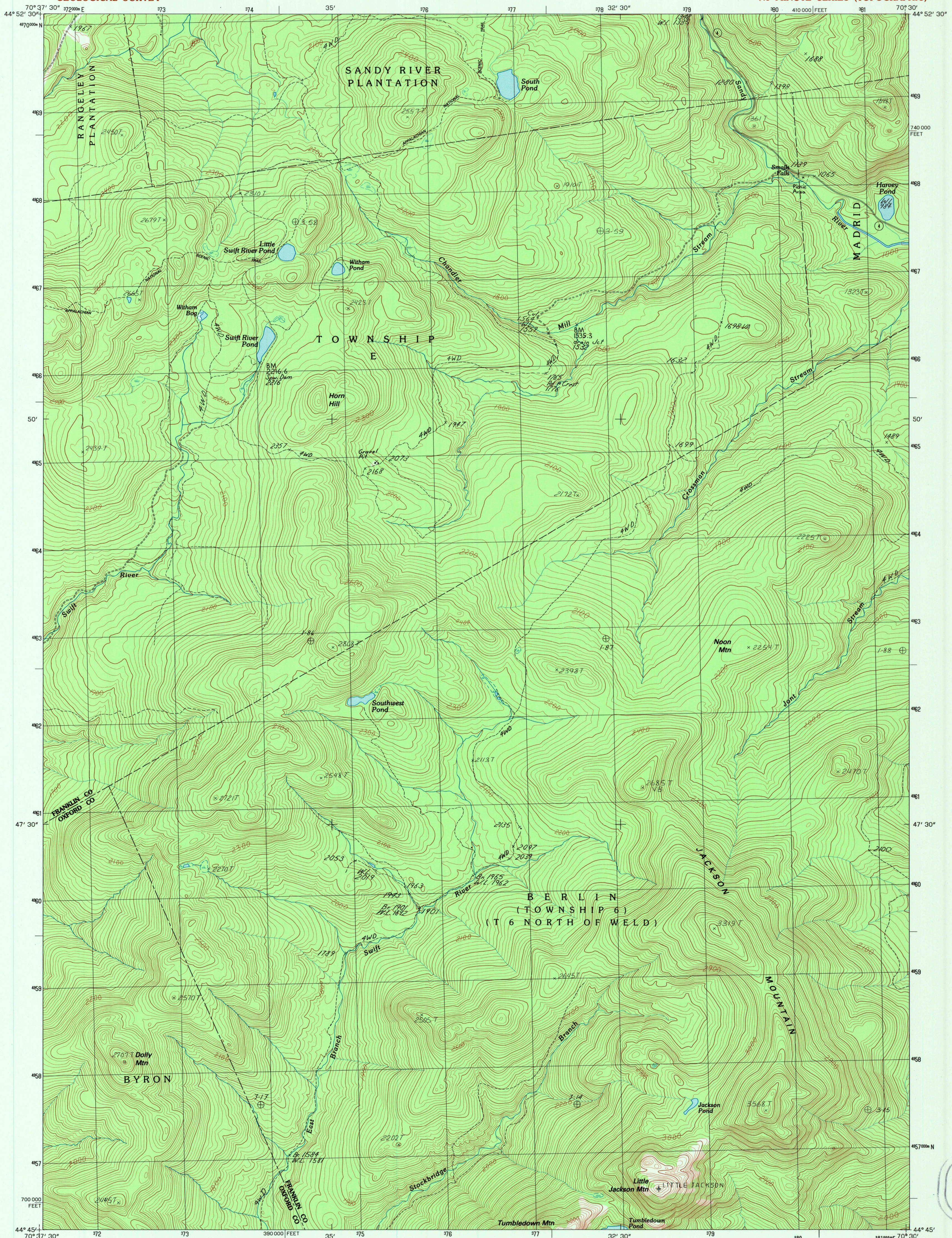


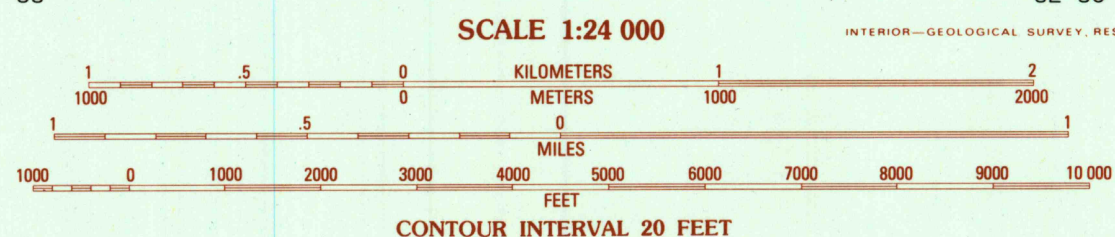
UNITED STATES  
DEPARTMENT OF THE INTERIOR  
GEOLOGICAL SURVEY

JACKSON MOUNTAIN QUADRANGLE  
MAINE  
7.5 MINUTE SERIES (TOPOGRAPHIC)



PRODUCED BY THE UNITED STATES GEOLOGICAL SURVEY  
CONTROL BY: USGS AND NOS/NOAA  
COMPILED FROM AERIAL PHOTOGRAPHS TAKEN: 1981  
FIELD CHECKED: 1982 MAP EDITED: 1984  
PROJECTION: TRANSVERSE MERCATOR  
GRID: 1000-METER UNIVERSAL TRANSVERSE MERCATOR . . . . . ZONE 19  
10,000-FOOT STATE GRID TICS: MAINE, WEST ZONE  
UTM GRID DECLINATION: 1° 06' WEST  
1984 MAGNETIC NORTH DECLINATION: 17° 30' WEST  
VERTICAL DATUM: NATIONAL GEODETIC VERTICAL DATUM OF 1929  
HORIZONTAL DATUM: 1927 NORTH AMERICAN DATUM  
To place on the predicted North American Datum of 1983, move  
the projection lines as shown by dashed corner ticks (3 meters  
south and 40 meters west)  
There may be private inholdings within the boundaries of any  
National or State reservations shown on this map  
No distinction made between houses, barns, and other buildings

**PROVISIONAL MAP**  
Produced from original  
manuscript drawings. Infor-  
mation shown as of date of  
photography.



THIS MAP COMPLIES WITH NATIONAL MAP ACCURACY STANDARDS  
FOR SALE BY U. S. GEOLOGICAL SURVEY, RESTON, VIRGINIA 22092

1	2	3	1 Rangeley
4	5	2 Saddleback Mtn	
6	7	3 Redington	
		4 Houghton	
		5 Madrid	
		6 Ellis Pond	
		7 Roubury	
		8 Weld	

**ROAD LEGEND**  
Improved Road . . . . .  
Unimproved Road . . . . .  
Trail . . . . .  
Interstate Route U. S. Route State Route

**JACKSON MOUNTAIN, MAINE**  
PROVISIONAL EDITION 1984

44070-G5-TF-024

USGS AND HISTORICAL  
MAP ARCHIVES  
NOV 30 1997  
REC'D FILE COPY

1-24643-209-0 N831  
9 780607 23928