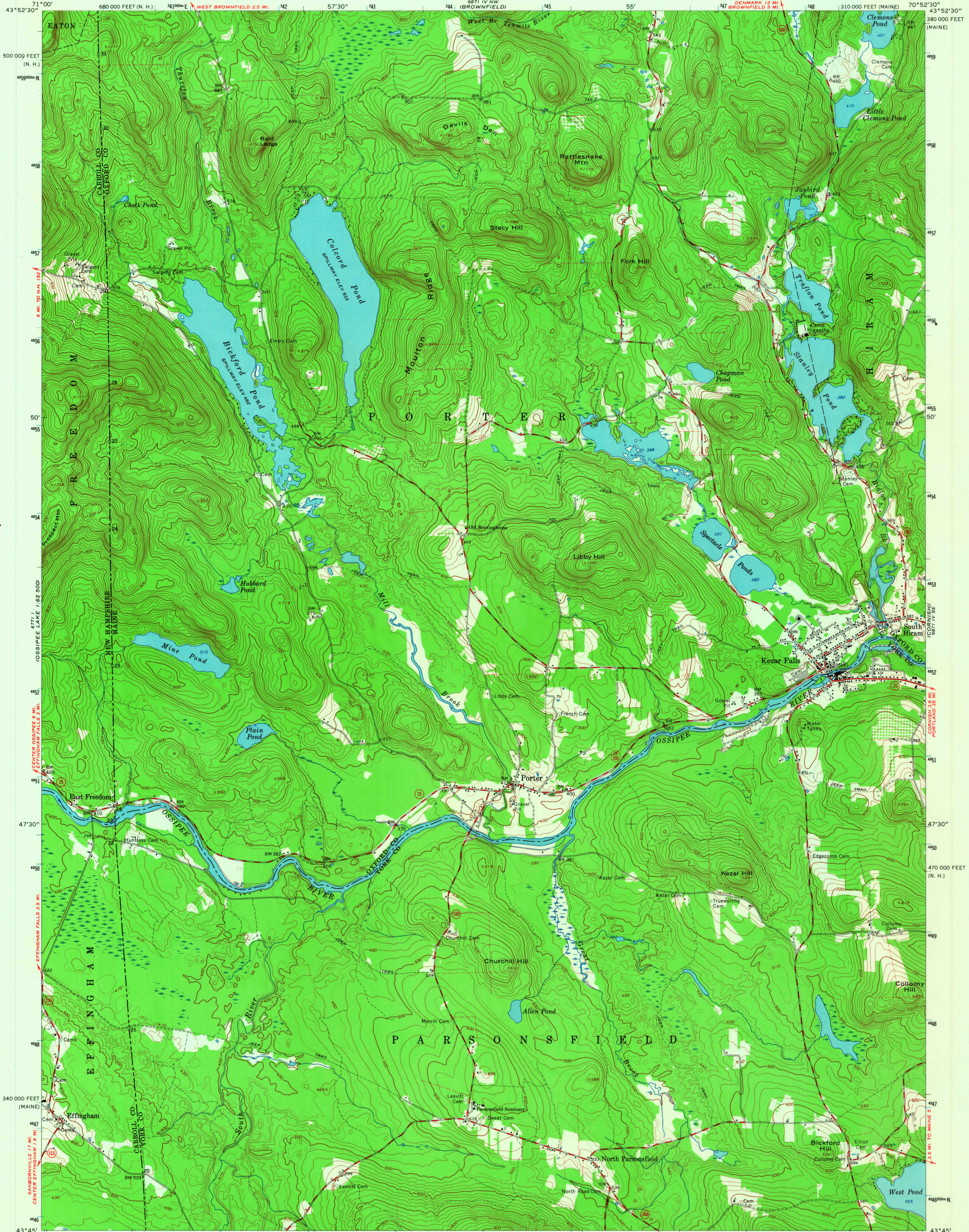


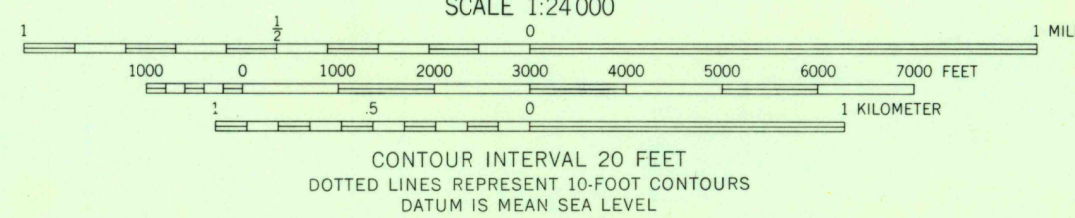
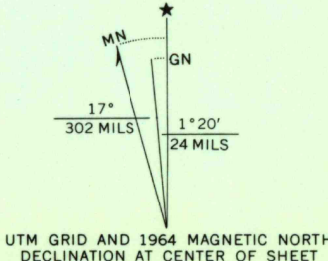
UNITED STATES
DEPARTMENT OF THE INTERIOR
GEOLOGICAL SURVEY

STATE OF MAINE
PUBLIC UTILITIES COMMISSION

KEZAR FALLS QUADRANGLE
MAINE-NEW HAMPSHIRE
7.5 MINUTE SERIES (TOPOGRAPHIC)
SW 1/4 KEZAR FALLS 15' QUADRANGLE



Mapped, edited, and published by the Geological Survey
Control by USGS and USC&GS
Topography by photogrammetric methods from aerial
photographs taken 1962. Field checked 1964
Polyconic projection. 1927 North American datum
10,000-foot grids based on Maine coordinate system, west zone,
and New Hampshire coordinate system
1000-meter Universal Transverse Mercator grid ticks,
zone 19, shown in blue
Fine red dashed lines indicate selected fence and field lines where
generally visible on aerial photographs. This information is unchecked



ROAD CLASSIFICATION
Heavy-duty ——— Light-duty ———
Medium-duty ——— Unimproved dirt ———
State Route ———



U.S.G.S. KEZAR FALLS, MAINE-N. H.
SW 1/4 KEZAR FALLS 15' QUADRANGLE
N4345-W7052.5/7.5

FILE COPY
TOPOGRAPHIC DIVISION

1964
AMS 6871 IV SW-SERIES V811

THIS MAP COMPLIES WITH NATIONAL MAP ACCURACY STANDARDS
FOR SALE BY U.S. GEOLOGICAL SURVEY, WASHINGTON, D. C. 20242
A FOLDER DESCRIBING TOPOGRAPHIC MAPS AND SYMBOLS IS AVAILABLE ON REQUEST

3525
JUN 1 1965