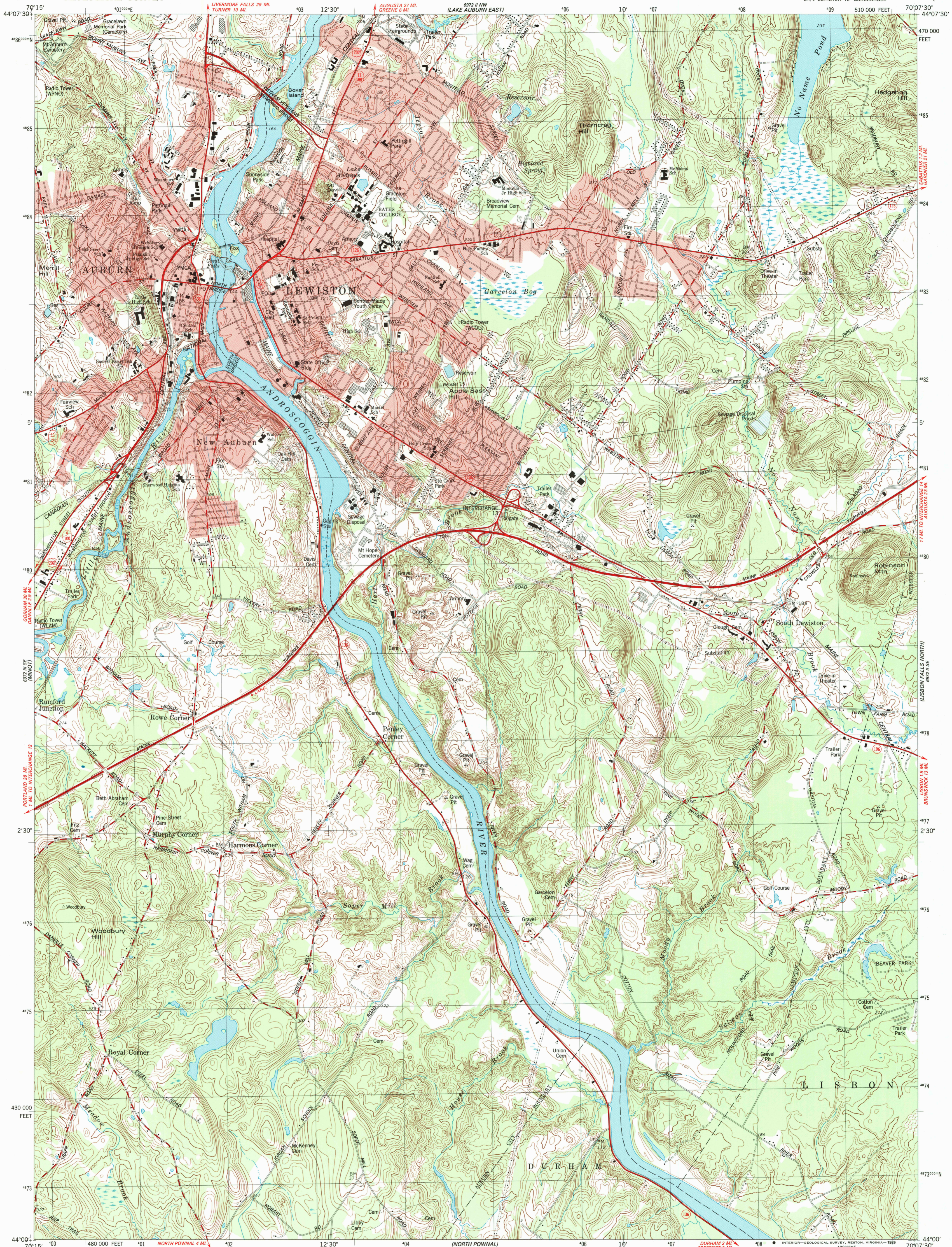
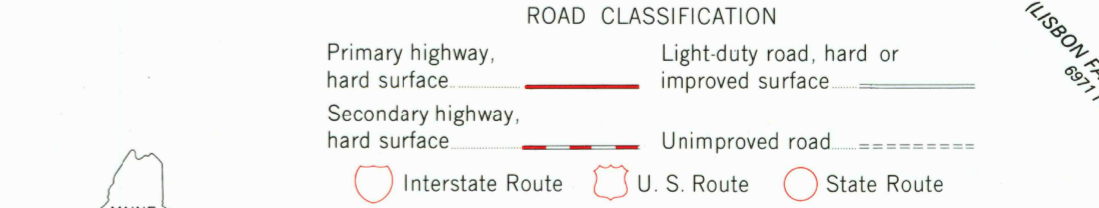
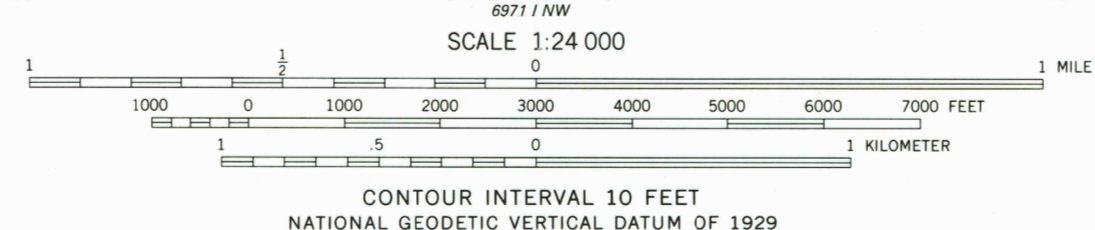
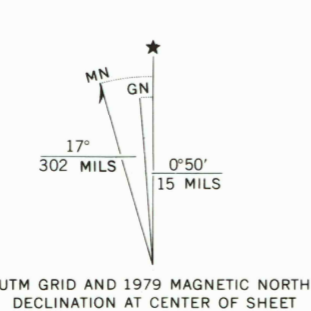


UNITED STATES  
DEPARTMENT OF THE INTERIOR  
GEOLOGICAL SURVEY

LEWISTON QUADRANGLE  
MAINE—ANDROSCOGGIN CO  
7.5 MINUTE SERIES (TOPOGRAPHIC)  
SW/4 LEWISTON 15' QUADRANGLE



Mapped, edited, and published by the Geological Survey  
Control by USGS, NOS/NOAA, and Maine Geodetic Survey  
Topography by photogrammetric methods from aerial photographs taken 1973. Field checked 1975. Map edited 1979  
Projection and 10,000-foot grid ticks: Maine coordinate system, west zone (transverse Mercator)  
1000-meter Universal Transverse Mercator grid, zone 19  
1927 North American Datum  
To place on the predicted North American Datum 1983 move the projection lines 4 meters south and 42 meters west as shown by dashed corner ticks  
Red tint indicates areas in which only landmark buildings are shown



**LEWISTON, MAINE**  
SW/4 LEWISTON 15' QUADRANGLE  
44070-A2-TF-024  
1979  
DMA 6972 II SW—SERIES V8.1

THIS MAP COMPLIES WITH NATIONAL MAP ACCURACY STANDARDS  
FOR SALE BY U.S. GEOLOGICAL SURVEY  
DENVER, COLORADO 80225, OR RESTON, VIRGINIA 22092  
A FOLDER DESCRIBING TOPOGRAPHIC MAPS AND SYMBOLS IS AVAILABLE ON REQUEST