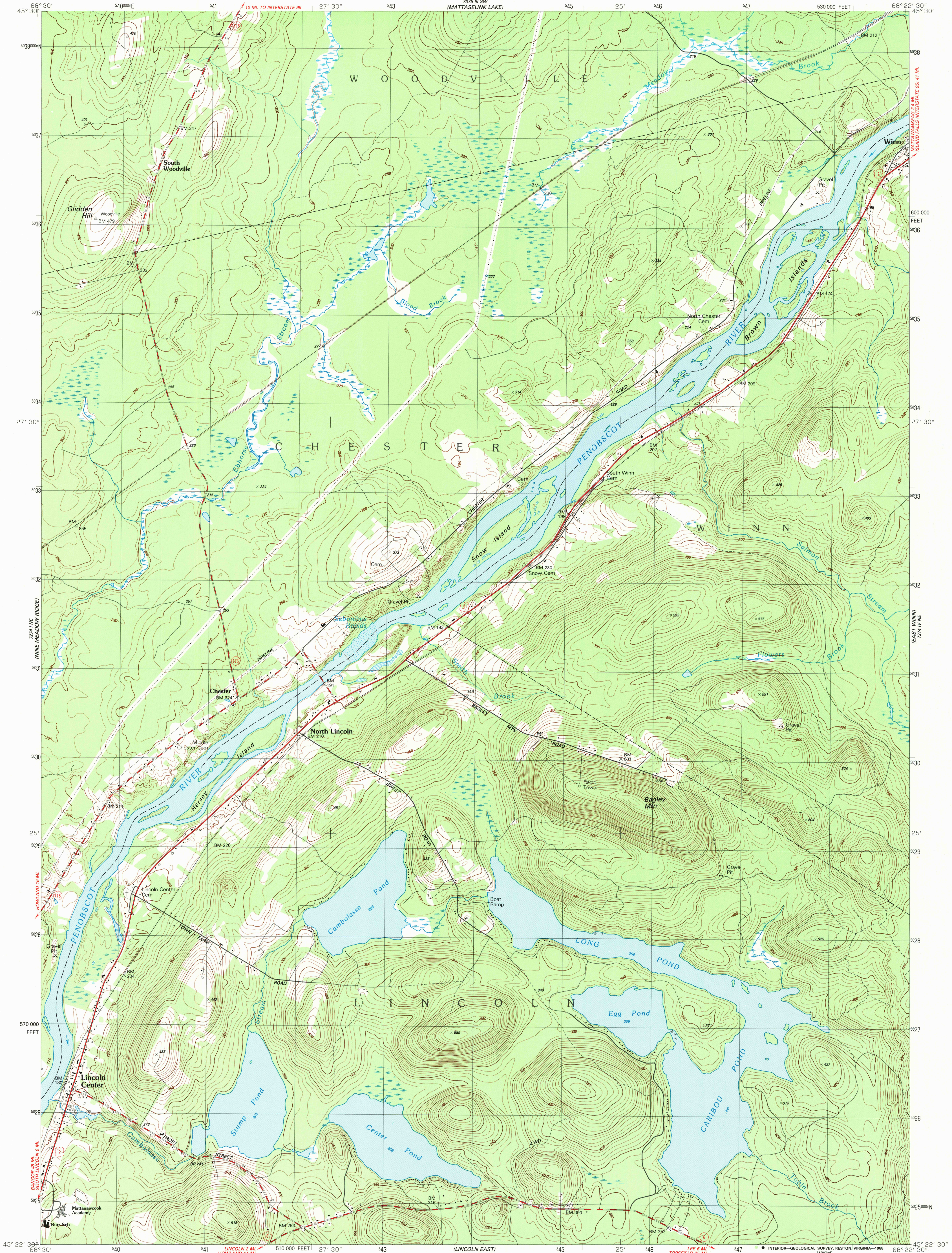
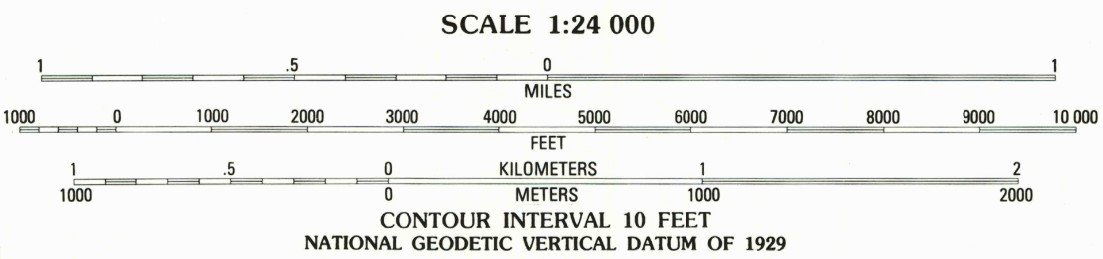
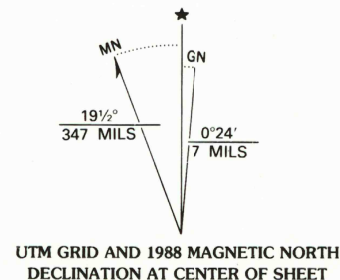


UNITED STATES  
DEPARTMENT OF THE INTERIOR  
GEOLOGICAL SURVEY

LINCOLN CENTER QUADRANGLE  
MAINE-PENOBSCOT CO.  
7.5 MINUTE SERIES (TOPOGRAPHIC)  
NW/4 WINN 15' QUADRANGLE



Produced by the United States Geological Survey  
Control by USGS and NOS/NOAA  
Topography by photogrammetric methods from aerial photographs taken 1958. Revised from aerial photographs taken 1984  
Field checked 1986. Map edited 1988  
Projection and 10,000-foot grid ticks: Maine coordinate system, east zone (transverse Mercator)  
1000-meter Universal Transverse Mercator grid, zone 19  
1927 North American Datum  
To place on the predicted North American Datum 1983, move the projection lines 1 meter south and 45 meters west as shown by dashed corner ticks  
All islands in the Penobscot River are part of the Penobscot Indian Reservation



ROAD CLASSIFICATION  
Primary highway, hard surface ..... Improved surface .....  
Secondary highway, hard surface ..... Unimproved road .....  
Interstate Route U. S. Route State Route

LINCOLN CENTER, MAINE  
NW/4 WINN 15' QUADRANGLE  
45068-D4-TF-024

1988

DMA 7374 IV NW-SERIES V811

THIS MAP COMPLIES WITH NATIONAL MAP ACCURACY STANDARDS  
FOR SALE BY U. S. GEOLOGICAL SURVEY, DENVER, COLORADO 80225, OR RESTON, VIRGINIA 22092  
A FOLDER DESCRIBING TOPOGRAPHIC MAPS AND SYMBOLS IS AVAILABLE ON REQUEST