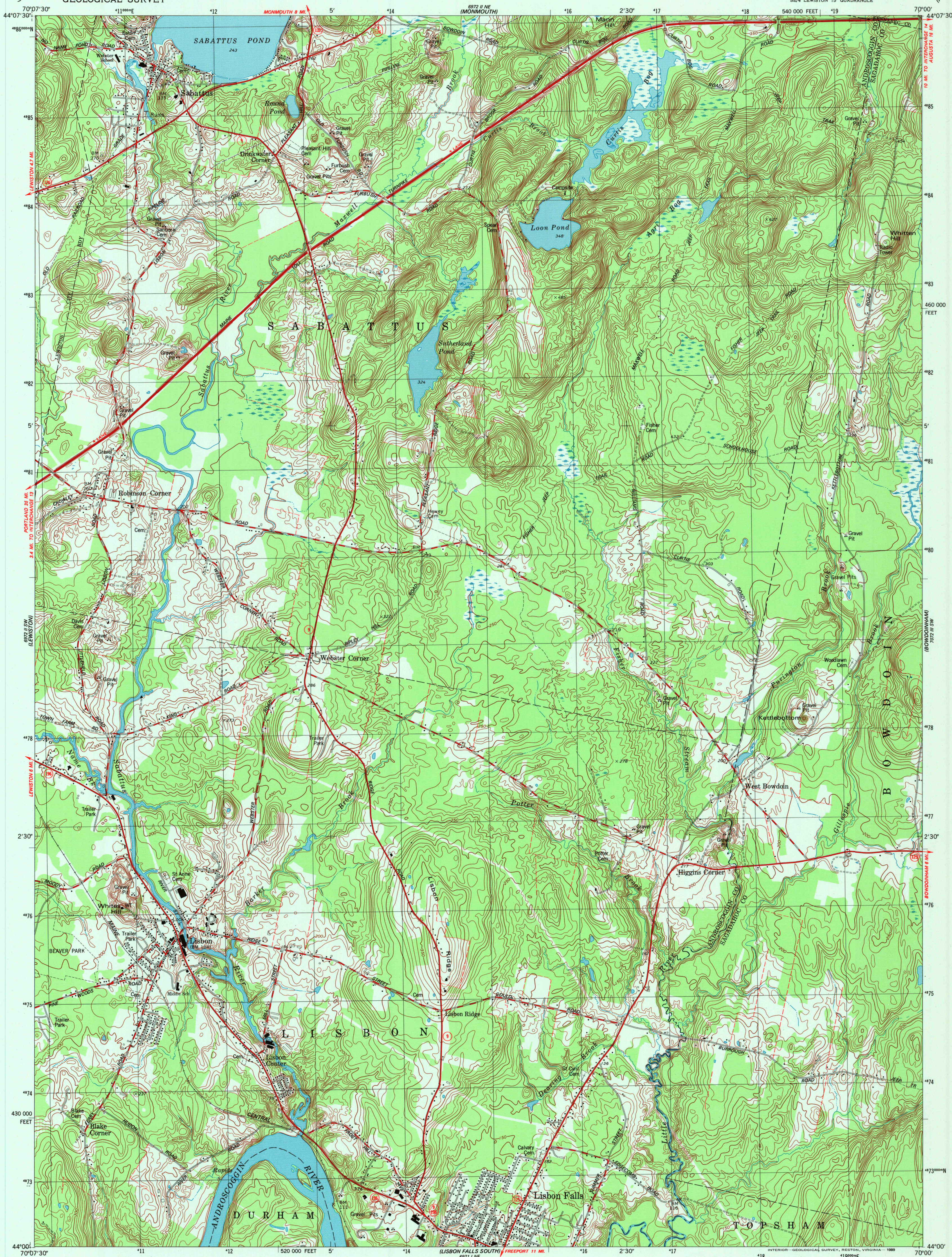


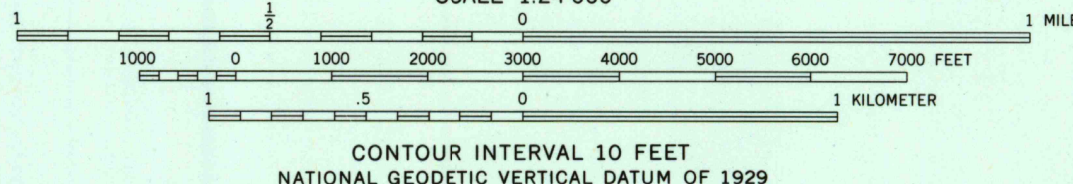
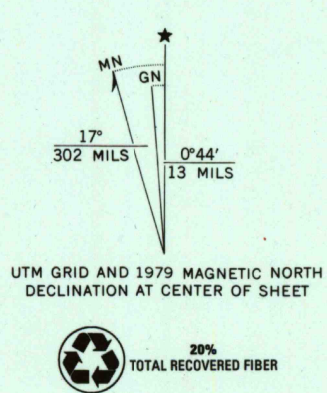
UNITED STATES  
DEPARTMENT OF THE INTERIOR  
GEOLOGICAL SURVEY

LISBON FALLS NORTH QUADRANGLE  
MAINE

7.5 MINUTE SERIES (TOPOGRAPHIC)  
SE/4 LEWISTON 15' QUADRANGLE



Mapped, edited, and published by the Geological Survey  
Control by USGS, NOS/NOAA and Maine Geodetic Survey  
Topography by photogrammetric methods from aerial photographs  
taken 1973. Field checked 1975. Map edited 1979  
Projection and 10,000-foot grid ticks: Maine coordinate  
system, west zone (transverse Mercator)  
1000-meter Universal Transverse Mercator grid, zone 19  
1927 North American datum  
To place on the predicted North American Datum 1983  
move the projection lines 4 meters south and  
42 meters west as shown by dashed corner ticks  
Fine red dashed lines indicate selected fence and field lines where  
generally visible on aerial photographs. This information is unchecked



ROAD CLASSIFICATION  
Primary highway, hard surface ————  
Secondary highway, hard surface ————  
Unimproved road ————  
Interstate Route U.S. Route State Route



LISBON FALLS NORTH, MAINE  
SE/4 LEWISTON 15' QUADRANGLE  
44070A1-TF-024

1979  
DMA 6972 II SE—SERIES V811

THIS MAP COMPLIES WITH NATIONAL MAP ACCURACY STANDARDS  
FOR SALE BY U.S. GEOLOGICAL SURVEY  
DENVER, COLORADO 80225, OR RESTON, VIRGINIA 22092  
A FOLDER DESCRIBING TOPOGRAPHIC MAPS AND SYMBOLS IS AVAILABLE ON REQUEST

RECEIVED  
SEP 30 2000  
USGS AND  
HISTORICAL MAP ARCHIVES

