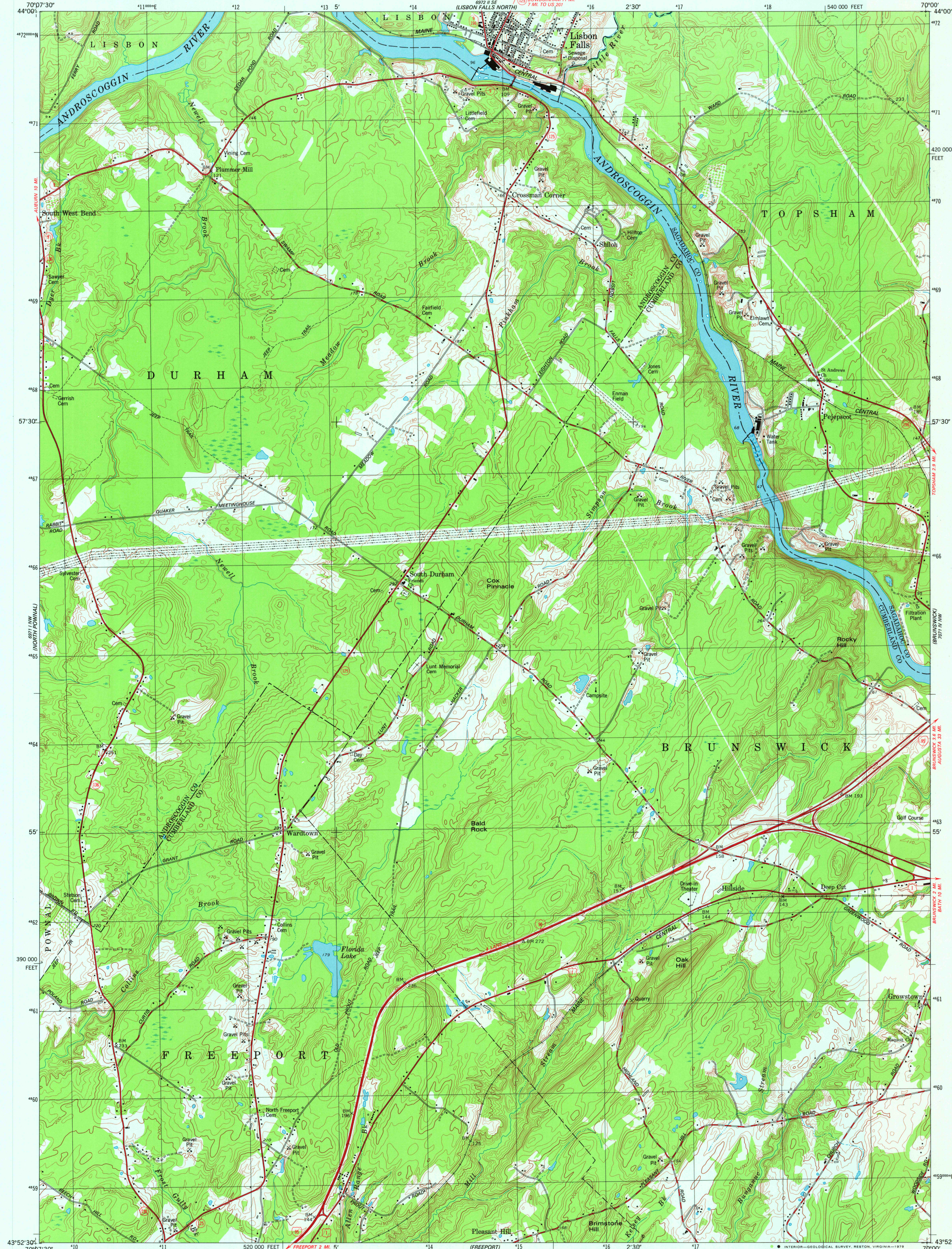


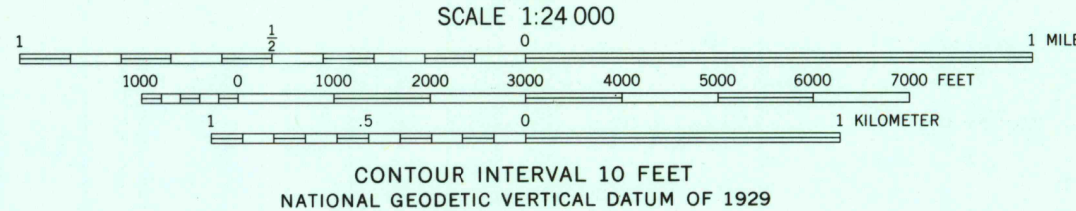
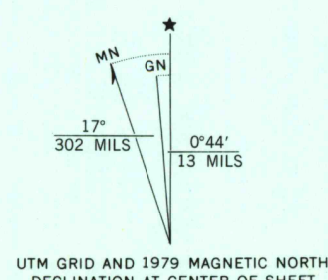
UNITED STATES  
DEPARTMENT OF THE INTERIOR  
GEOLOGICAL SURVEY



LISBON FALLS SOUTH QUADRANGLE  
MAINE  
7.5 MINUTE SERIES (TOPOGRAPHIC)  
NE/4 FREEPORT 15' QUADRANGLE  
N4352.5-W7000.7.5



Mapped, edited, and published by the Geological Survey  
Control by USGS, NOS/NOAA and Maine Geodetic Survey  
Topography by photogrammetric methods from aerial photographs  
taken 1973. Field checked 1975. Map edited 1979  
Projection and 10,000-foot grid ticks: Maine coordinate  
system, west zone (transverse Mercator)  
1000-meter Universal Transverse Mercator grid, zone 19  
1927 North American datum  
To place on the predicted North American Datum 1983  
move the projection lines 4 meters south and  
42 meters west as shown by dashed corner ticks



CONTOUR INTERVAL 10 FEET  
NATIONAL GEODETIC VERTICAL DATUM OF 1929

THIS MAP COMPLIES WITH NATIONAL MAP ACCURACY STANDARDS  
FOR SALE BY U. S. GEOLOGICAL SURVEY, RESTON, VIRGINIA 22092  
A FOLDER DESCRIBING TOPOGRAPHIC MAPS AND SYMBOLS IS AVAILABLE ON REQUEST



ROAD CLASSIFICATION  
Primary highway  
hard surface  
Secondary highway,  
hard surface  
Light-duty road, hard or  
improved surface  
Unimproved road  
Interstate Route  
U. S. Route  
State Route

LISBON FALLS SOUTH, MAINE  
NE/4 FREEPORT 15' QUADRANGLE  
N4352.5-W7000.7.5

1979

DMA 6971 1 NE-SERIES V811

USGS  
Historical File  
Topographic Division

NOV 19 1978

1800