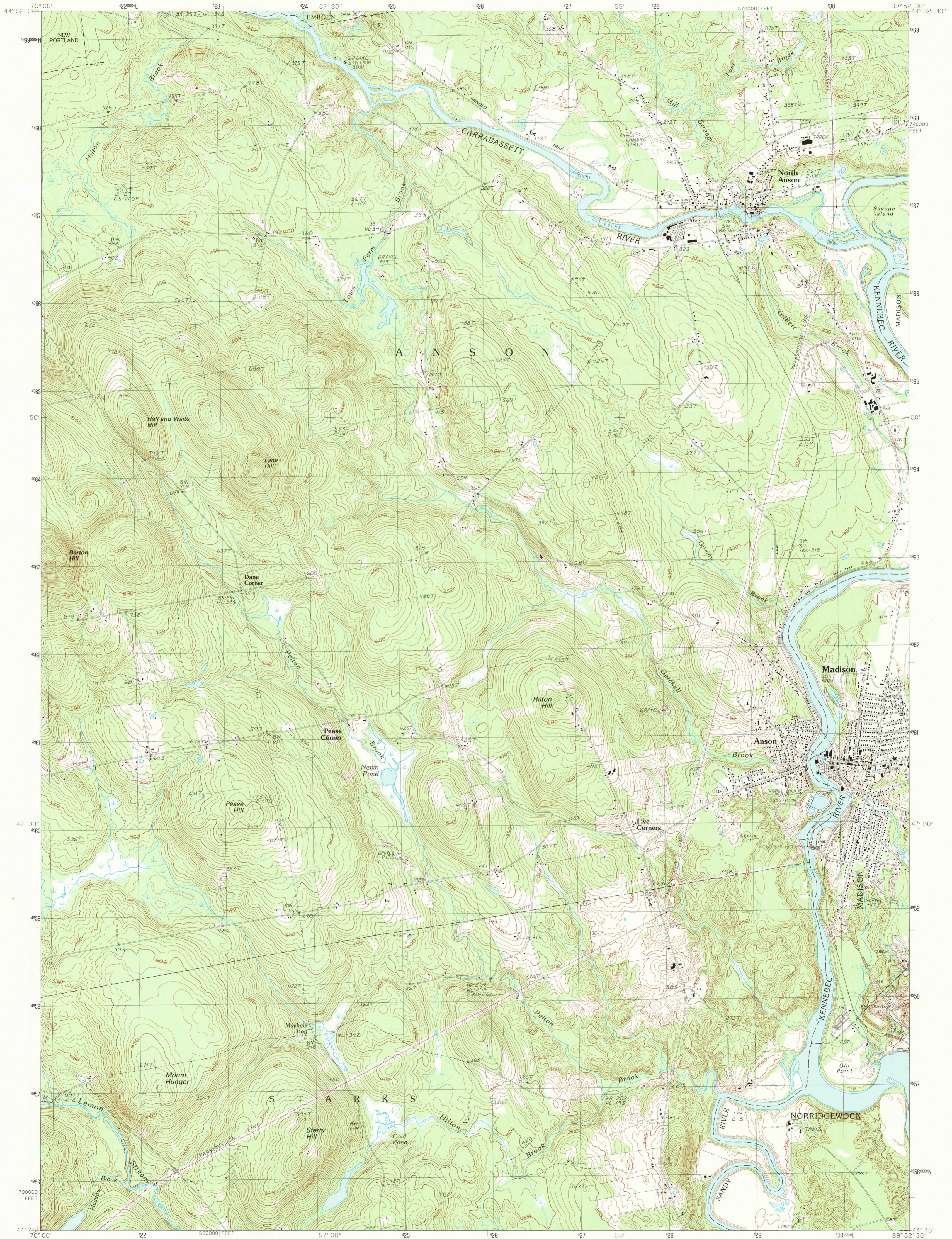


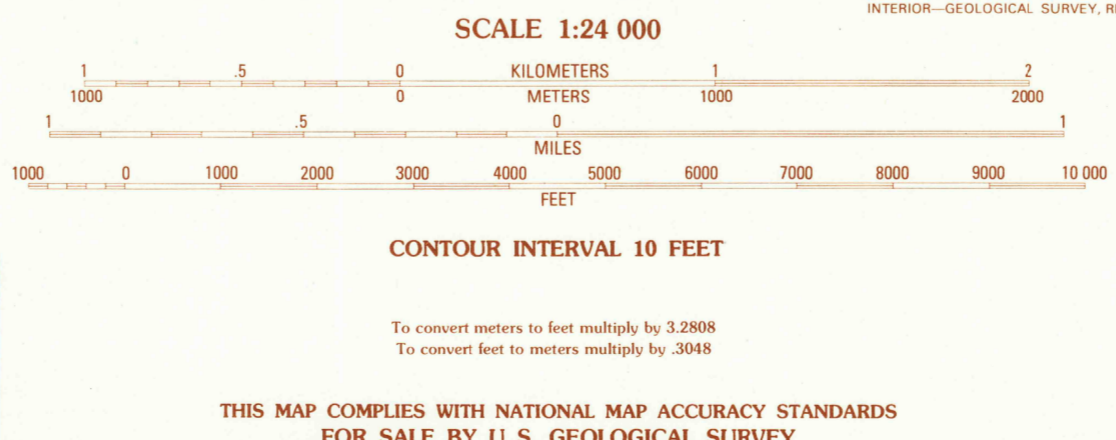
UNITED STATES
DEPARTMENT OF THE INTERIOR
GEOLOGICAL SURVEY

MADISON WEST QUADRANGLE
MAINE—SOMERSET CO.
7.5 MINUTE SERIES (TOPOGRAPHIC)



PRODUCED BY THE UNITED STATES GEOLOGICAL SURVEY
CONTROL BY USGS AND NOAA
COMPILED FROM AERIAL PHOTOGRAPHS TAKEN.....1983
FIELD CHECKED.....1985 MAP EDITED.....1989
PROJECTION.....TRANSVERSE MERCATOR
GRID: 1000-METER UNIVERSAL TRANSVERSE MERCATOR.....ZONE 19
10,000-FOOT STATE GRID TICKS.....MAINE, WEST ZONE
UTM GRID DECLINATION.....0.40 WEST
1989 MAGNETIC NORTH DECLINATION.....18.00 WEST
VERTICAL DATUM.....NATIONAL GEODETIC VERTICAL DATUM OF 1929
HORIZONTAL DATUM.....1927 NORTH AMERICAN DATUM
To place on the predicted North American Datum of 1983,
move the projection lines as shown by dashed corner ticks
(3 meters south and 41 meters west)
There may be private inholdings within the boundaries of any
Federal or State reservations shown on this map
No distinction made between houses, barns, and other buildings

PROVISIONAL MAP
Produced from original
manuscript drawings. Infor-
mation shown as of date of
photography.



SCALE 1:24 000
KILOMETERS 0 1 2
METERS 0 1000 2000
MILES 0 1
FEET 0 1000 2000 3000 4000 5000 6000 7000 8000 9000 10 000
CONTOUR INTERVAL 10 FEET
To convert meters to feet multiply by 3.2808
To convert feet to meters multiply by .3048
THIS MAP COMPLIES WITH NATIONAL MAP ACCURACY STANDARDS
FOR SALE BY U.S. GEOLOGICAL SURVEY
DENVER, COLORADO 80225, OR RESTON, VIRGINIA 22092
ADJOINING 7.5 QUADRANGLE NAMES
1 2 3 1 New Portland
2 Embden Pond
3 Solon
4 New Vineyard
5 Madison East
6 New Sharon
7 Mercer
8 Norridgewock
ROAD LEGEND
Improved Road
Unimproved Road
Trail
Interstate Route U.S. Route State Route
MADISON WEST, MAINE
PROVISIONAL EDITION 1989
44069-G8-TF-024