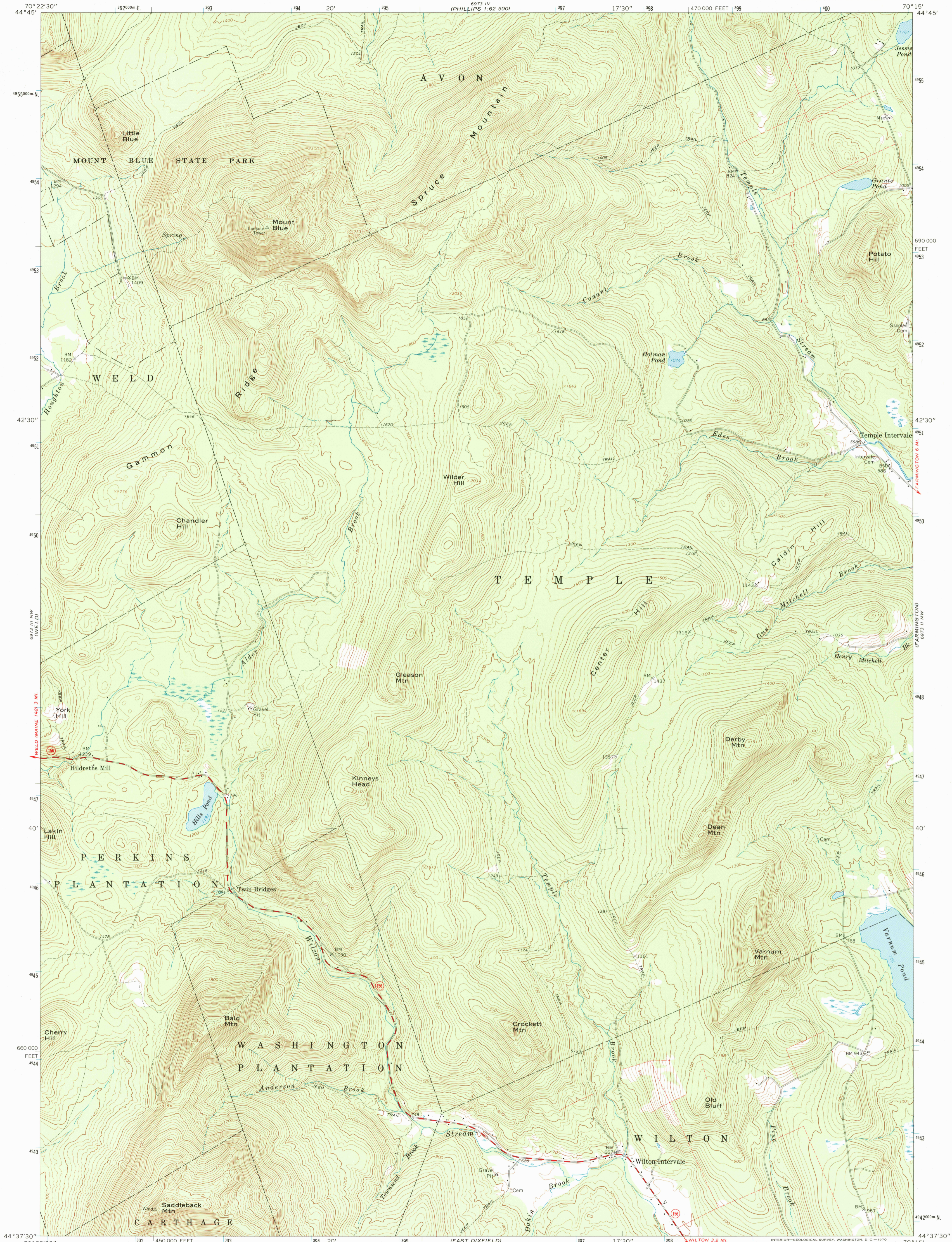


6973 IV
(PHILLIPS 1:62 500)



Maped, edited, and published by the Geological Survey
Control by USGS and USC&GS
Topography by photogrammetric methods from aerial photographs taken 1965. Field checked 1968
Polyconic projection. 1927 North American datum
10,000-foot grid based on Maine coordinate system, west zone 1000-meter Universal Transverse Mercator grid ticks, zone 19, shown in blue
Fine red dashed lines indicate selected fence and field lines where generally visible on aerial photographs. This information is unchecked

UTM GRID AND 1968 MAGNETIC NORTH DECLINATION AT CENTER OF SHEET

SCALE 1:24 000

ROAD CLASSIFICATION
Secondary highway, all weather, Light-duty road, all weather, hard surface
Improved surface
Unimproved road, fair or dry weather
State Route

MOUNT BLUE, MAINE
NE/4 DIXFIELD 15' QUADRANGLE
N4437.5—W7015/7.5
1968
ANS 6973 III NE—SERIES V811

THIS MAP COMPLIES WITH NATIONAL MAP ACCURACY STANDARDS
FOR SALE BY U.S. GEOLOGICAL SURVEY, WASHINGTON, D. C. 20242
A FOLDER DESCRIBING TOPOGRAPHIC MAPS AND SYMBOLS IS AVAILABLE ON REQUEST

