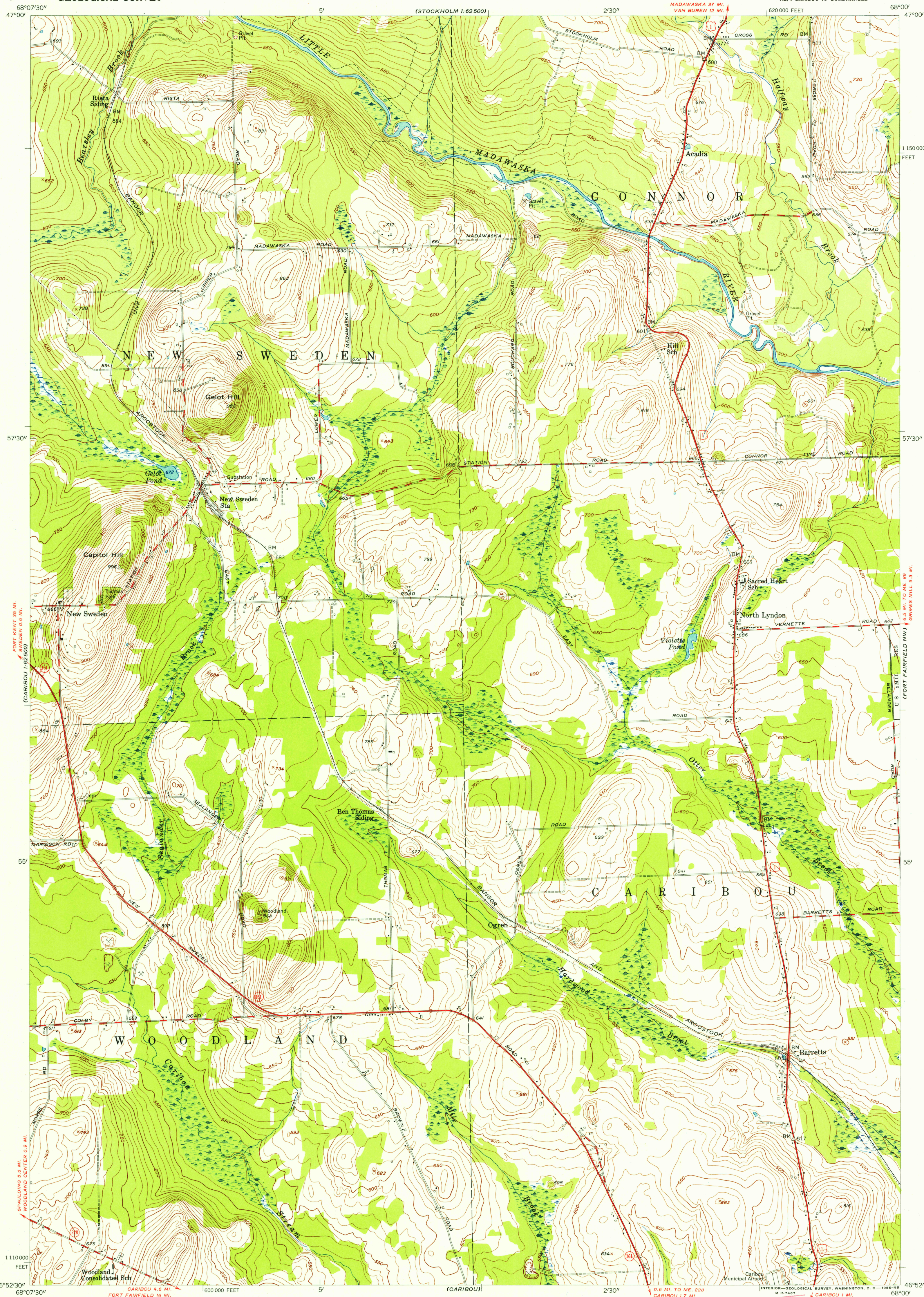
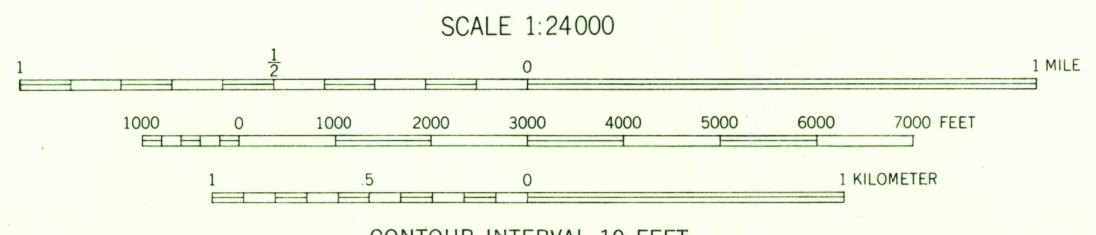
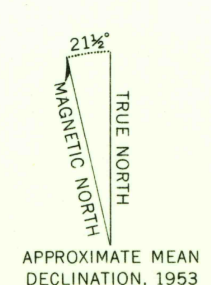


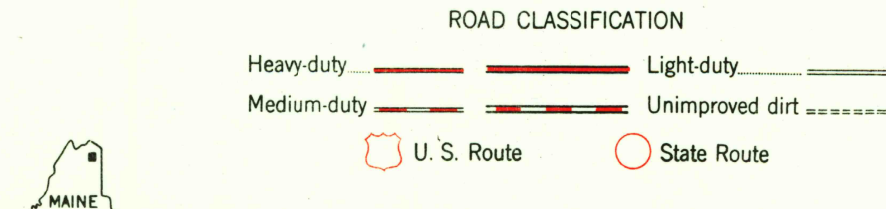
U.S.G.S.
FILE COPY
TOPOGRAPHIC DIVISION



Mapped, edited, and published by the Geological Survey
Control by USGS, USC&GS, and International Boundary Commission
Topography from aerial photographs by stereoplanigraph
methods. Aerial photographs taken 1952. Field check 1953
Polyconic projection. 1927 North American datum
10,000-foot grid based on Maine coordinate system,
east zone



CONTOUR INTERVAL 10 FEET
DATUM IS MEAN SEA LEVEL



NEW SWEDEN, ME.
NE/4 CARIBOU 15' QUADRANGLE
N 4652.5—W 6800/7.5

THIS MAP COMPLIES WITH NATIONAL MAP ACCURACY STANDARDS
FOR SALE BY U. S. GEOLOGICAL SURVEY, WASHINGTON 25, D. C.
A FOLDER DESCRIBING TOPOGRAPHIC MAPS AND SYMBOLS IS AVAILABLE ON REQUEST

1953

JUL 20 1955

2 / 30