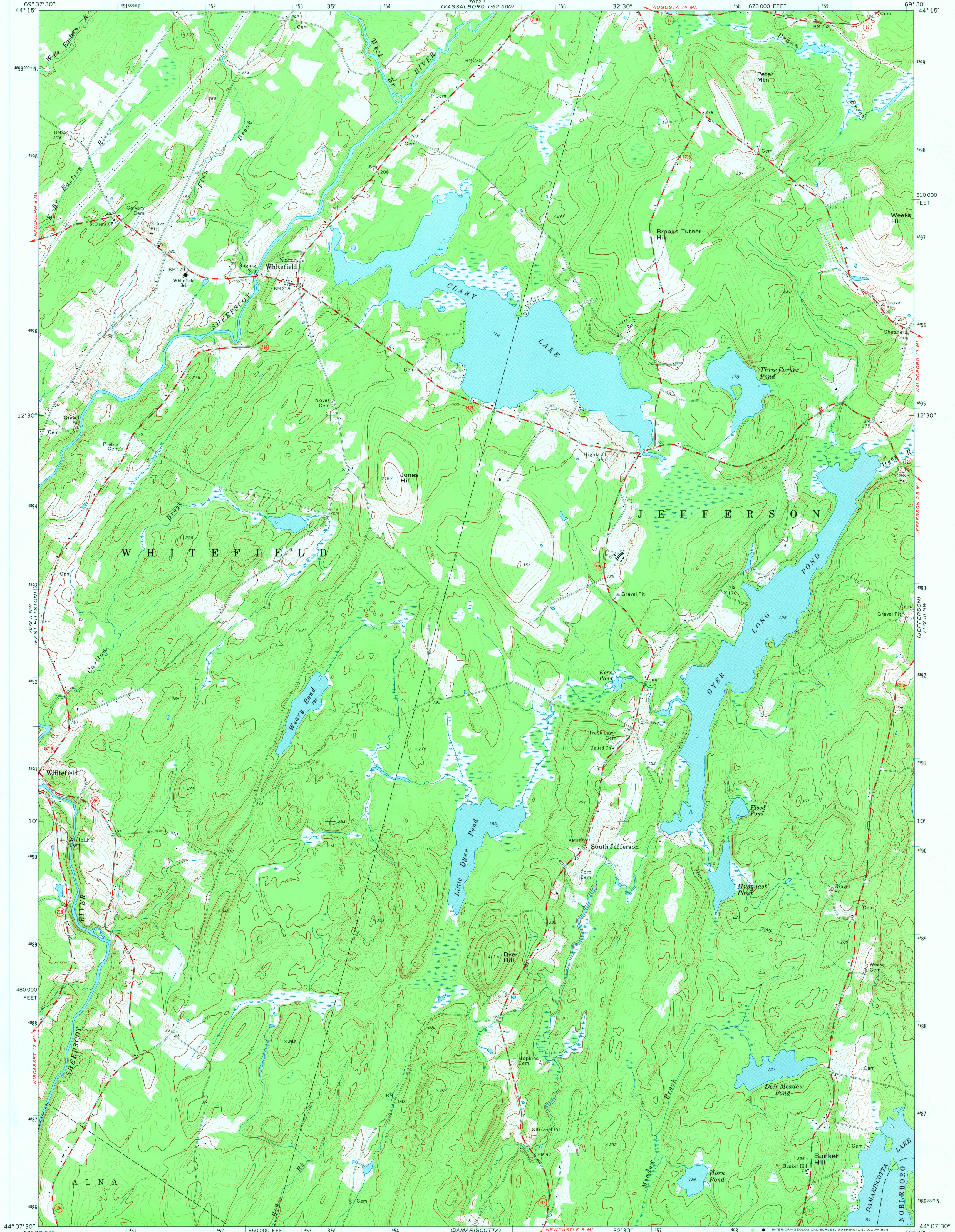


UNITED STATES
DEPARTMENT OF THE INTERIOR
GEOLOGICAL SURVEY

STATE OF MAINE
PUBLIC UTILITIES COMMISSION

NORTH WHITEFIELD QUADRANGLE
MAINE—LINCOLN CO.
7.5 MINUTE SERIES (TOPOGRAPHIC)
NE 1/4 WISCASSET 15' QUADRANGLE



Mapped, edited, and published by the Geological Survey

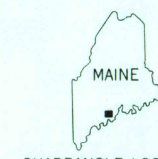
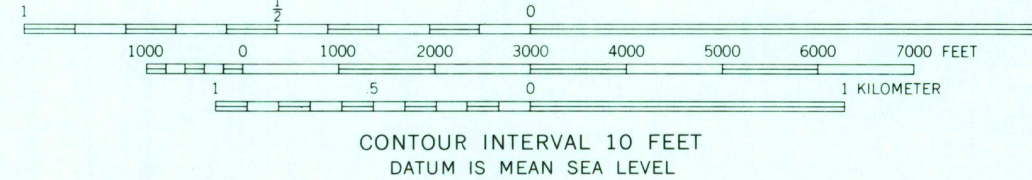
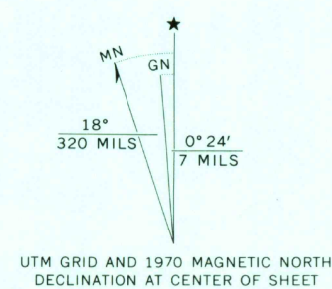
Control by USGS and USC&GS

Topography by photogrammetric methods from aerial photographs taken 1967. Field checked 1970

Projection and 10,000-foot grid ticks: Maine coordinate system, west zone (transverse Mercator)

1000-meter Universal Transverse Mercator grid ticks, zone 19, shown in blue. 1927 North American datum

Fine red dashed lines indicate selected fence and field lines where generally visible on aerial photographs. This information is unchecked



USGS
Historical File
Topographic Division

ROAD CLASSIFICATION	
Primary highway, hard surface	Light-duty road, hard or improved surface
Secondary highway, hard surface	Unimproved road
Interstate Route	U. S. Route
	State Route

NORTH WHITEFIELD, MAINE
NE 1/4 WISCASSET 15' QUADRANGLE
N4407.5—W6930/7.5

1970

AMS 7072 II NE—SERIES V811

THIS MAP COMPLIES WITH NATIONAL MAP ACCURACY STANDARDS
FOR SALE BY U. S. GEOLOGICAL SURVEY, WASHINGTON, D. C. 20242
A FOLDER DESCRIBING TOPOGRAPHIC MAPS AND SYMBOLS IS AVAILABLE ON REQUEST

3220