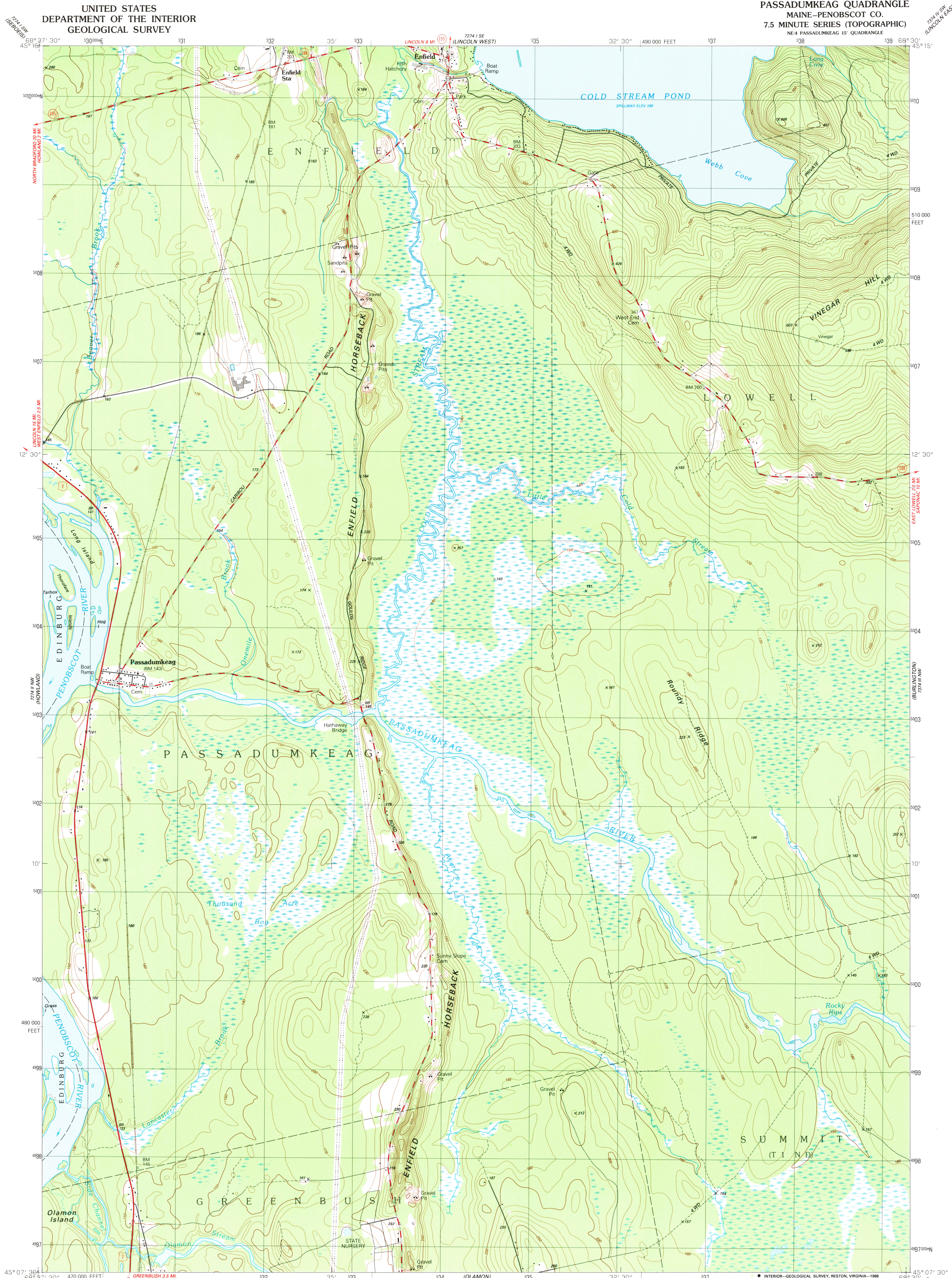


UNITED STATES
DEPARTMENT OF THE INTERIOR
GEOLOGICAL SURVEY

PASSADUMKEAG QUADRANGLE
MAINE-PENOBSCOT CO.
7.5 MINUTE SERIES (TOPOGRAPHIC)



Produced by the United States Geological Survey

Control by USGS and NOS/NOAA

Topography by photogrammetric methods from aerial photographs taken 1958. Revised from aerial photographs taken 1984. Field checked 1986. Map edited 1988

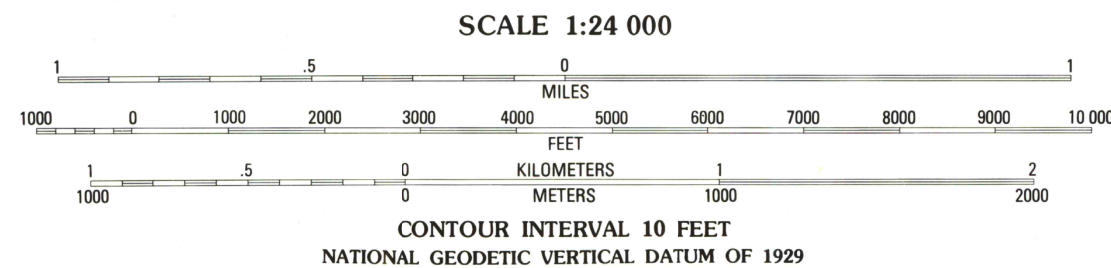
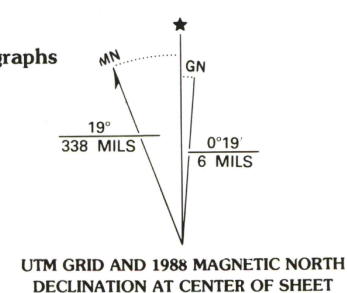
Projection and 10,000-foot grid ticks: Maine coordinate system, east zone (transverse Mercator)

1000-meter Universal Transverse Mercator grid, zone 19

1927 North American Datum

To place on the predicted North American Datum 1983, move the projection lines 2 meters south and 45 meters west as shown by dashed corner ticks

All islands in the Penobscot River are part of the Penobscot Indian Reservation



QUADRANGLE LOCATION

ROAD CLASSIFICATION	
Primary highway, hard surface	Light-duty road, hard or improved surface
Secondary highway, hard surface	Unimproved road
Interstate Route	U. S. Route
	State Route

PASSADUMKEAG, MAINE
NE-4 PASSADUMKEAG 15' QUADRANGLE
45068-B5-TF-024

1988

DMA 7274 II NE-SERIES V811

