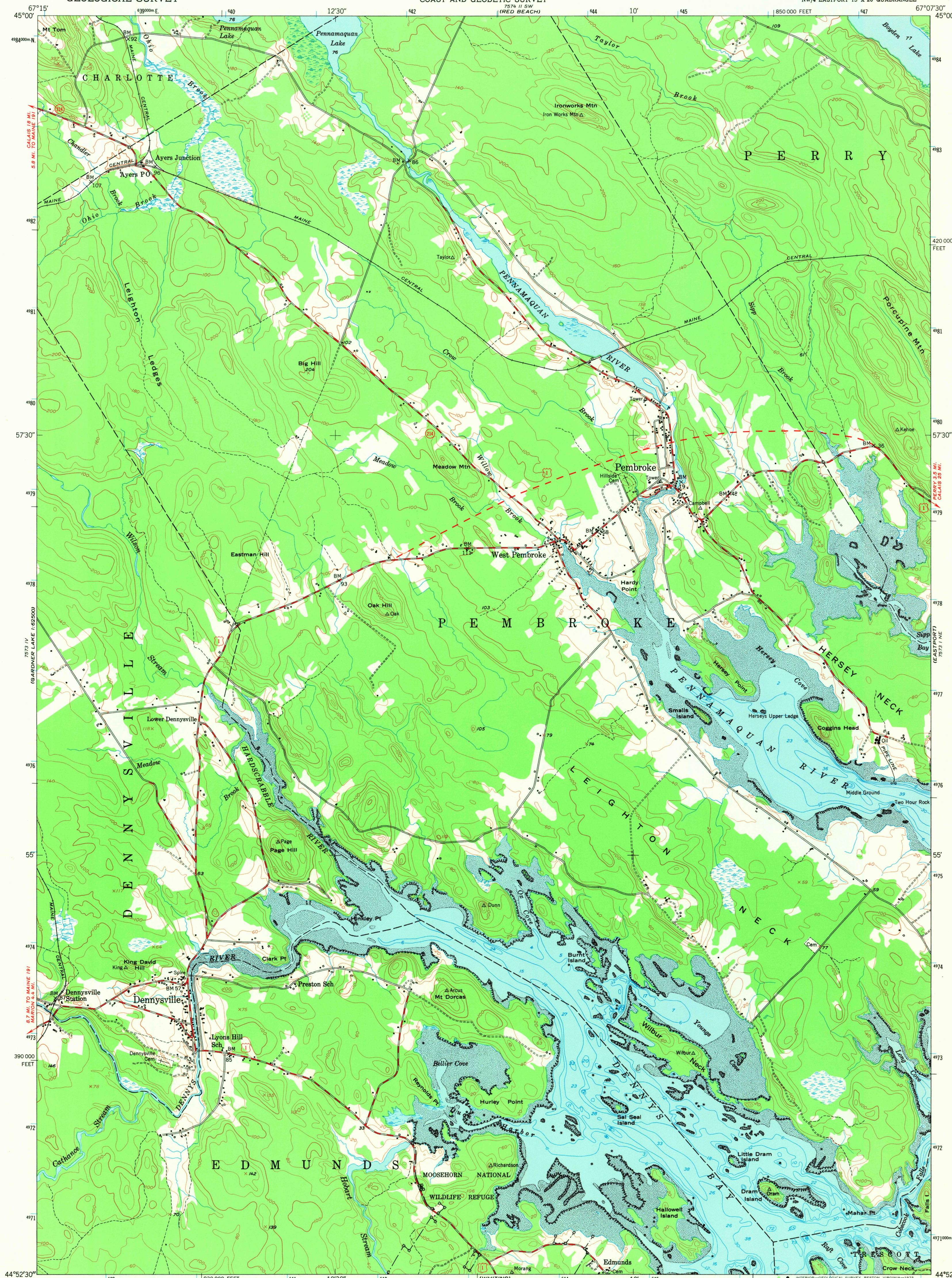


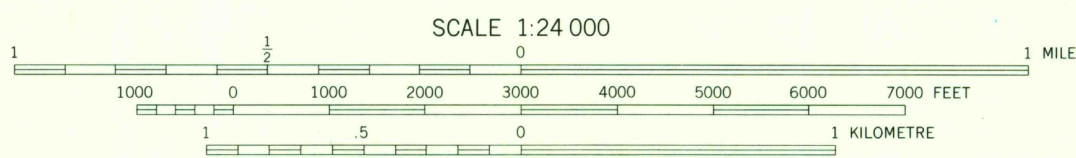
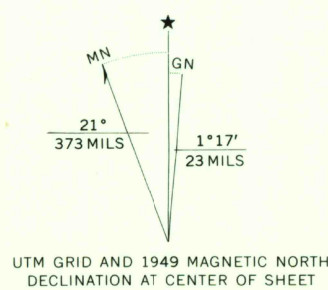
UNITED STATES  
DEPARTMENT OF THE INTERIOR  
GEOLOGICAL SURVEY

UNITED STATES  
DEPARTMENT OF COMMERCE  
COAST AND GEODETIC SURVEY

PEMBROKE QUADRANGLE  
MAINE-WASHINGTON CO.  
7.5 MINUTE SERIES (TOPOGRAPHIC)  
NW/4 EASTPORT 15' X 20' QUADRANGLE



Maped by the U. S. Coast & Geodetic Survey  
Edited and published by the Geological Survey  
Control by USC&GS, USGS, and MIT  
Topography from aerial photographs by multiplex methods  
Aerial photographs taken 1946. Field check 1949  
Hydrography compiled from USC&GS chart 801, 1949  
Polyconic projection. 1927 North American datum  
10,000-foot grid based on Maine coordinate system,  
east zone  
1000-metre Universal Transverse Mercator grid ticks,  
zone 19, shown in blue



CONTOUR INTERVAL 20 FEET  
NATIONAL GEODETIC VERTICAL DATUM OF 1929  
DEPTH CURVES AND SOUNDINGS IN FEET-DATUM IS MEAN LOW WATER  
SHORELINE SHOWN REPRESENTS THE APPROXIMATE LINE OF MEAN HIGH WATER  
THE AVERAGE RANGE OF TIDE IS APPROXIMATELY 18 FEET  
THIS MAP COMPLIES WITH NATIONAL MAP ACCURACY STANDARDS  
FOR SALE BY U. S. GEOLOGICAL SURVEY, RESTON, VIRGINIA 22092  
A FOLDER DESCRIBING TOPOGRAPHIC MAPS AND SYMBOLS IS AVAILABLE ON REQUEST



ROAD CLASSIFICATION  
USC&GS T-8790  
Medium-duty ——— Light-duty ———  
Unimproved dirt ———  
U. S. Route ——— State Route ———

PEMBROKE, ME.  
NW/4 EASTPORT 15' X 20' QUADRANGLE  
N4452.5-W6707.5/7.5

1949  
AMS 7573 I NW-SERIES V811

USGS  
HISTORICAL FILE  
TOPOGRAPHIC DIVISION