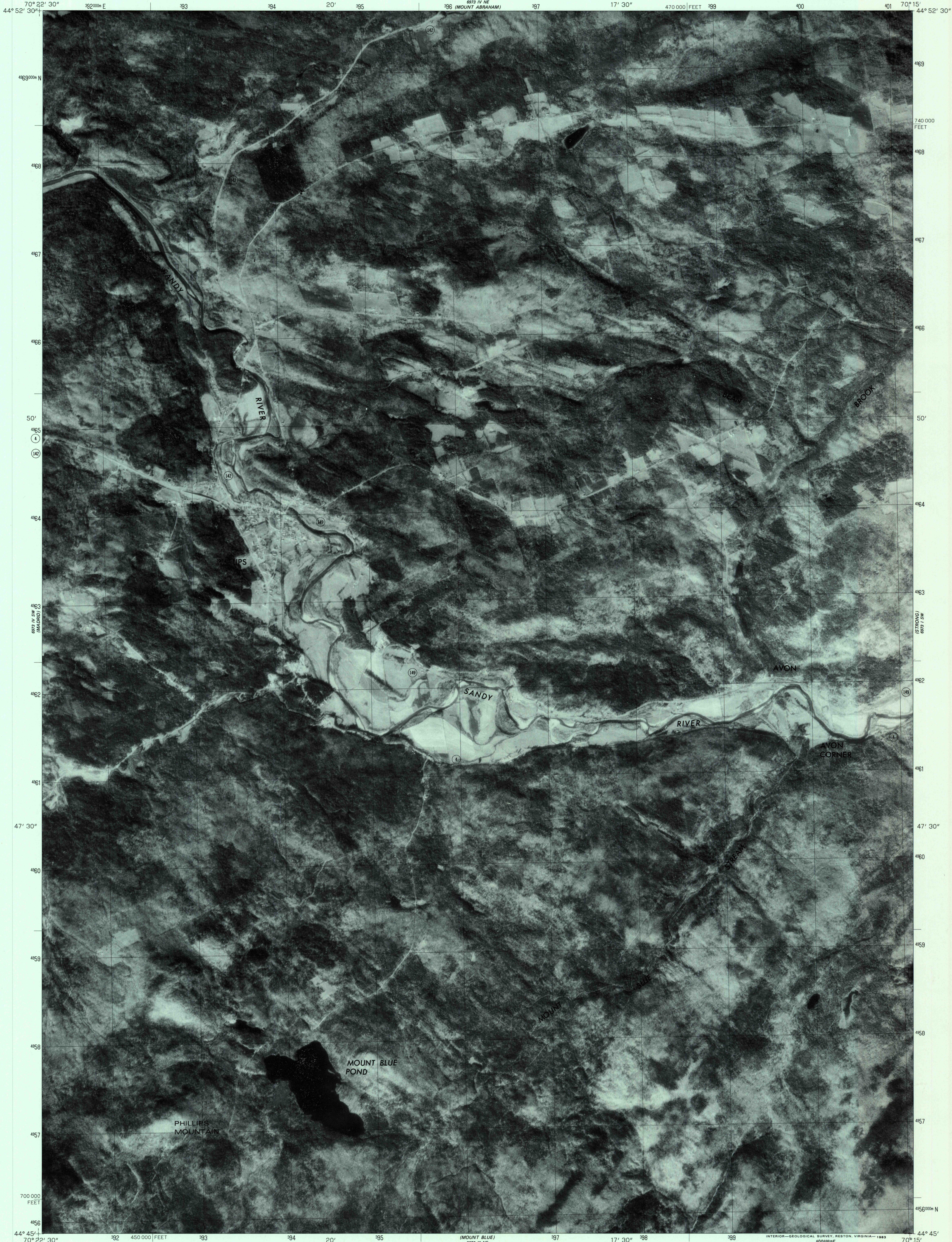
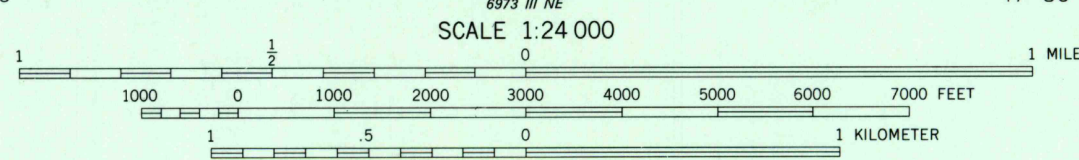
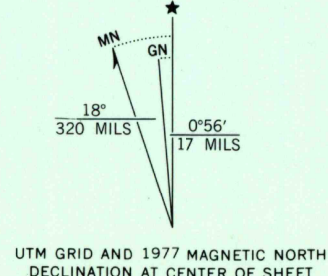


UNITED STATES
DEPARTMENT OF THE INTERIOR
GEOLOGICAL SURVEY

PHILLIPS QUADRANGLE
MAINE
7.5 MINUTE SERIES ORTHOPHOTOQUAD



Produced and published by the Geological Survey
Orthophotograph prepared from 1:80,000-scale
aerial photograph taken October 31, 1977
Projection and 10,000-foot grid ticks: Maine
coordinate system, west zone (transverse Mercator)
1000-meter Universal Transverse Mercator grid,
zone 19. 1927 North American Datum
To place on the predicted North American Datum 1983
move the projection lines 3 meters south and
41 meters west as shown by dashed corner ticks
Photomimagery rectified by automatic correlation



PRINCIPAL NUMBERED HIGHWAYS
Interstate Route U. S. Route State Route

This quadrangle area also covered by SE quarter
of Phillips 1:62,500-scale topographic map

PHILLIPS, MAINE
N4445-W7015/7.5

1977

DMA 6973 IV SE-SERIES V011

RETURN TO:
NSG HISTORICAL MAP ARCHIVES
NSG NATIONAL CENTER, MS-522
RESTON, VA 22094