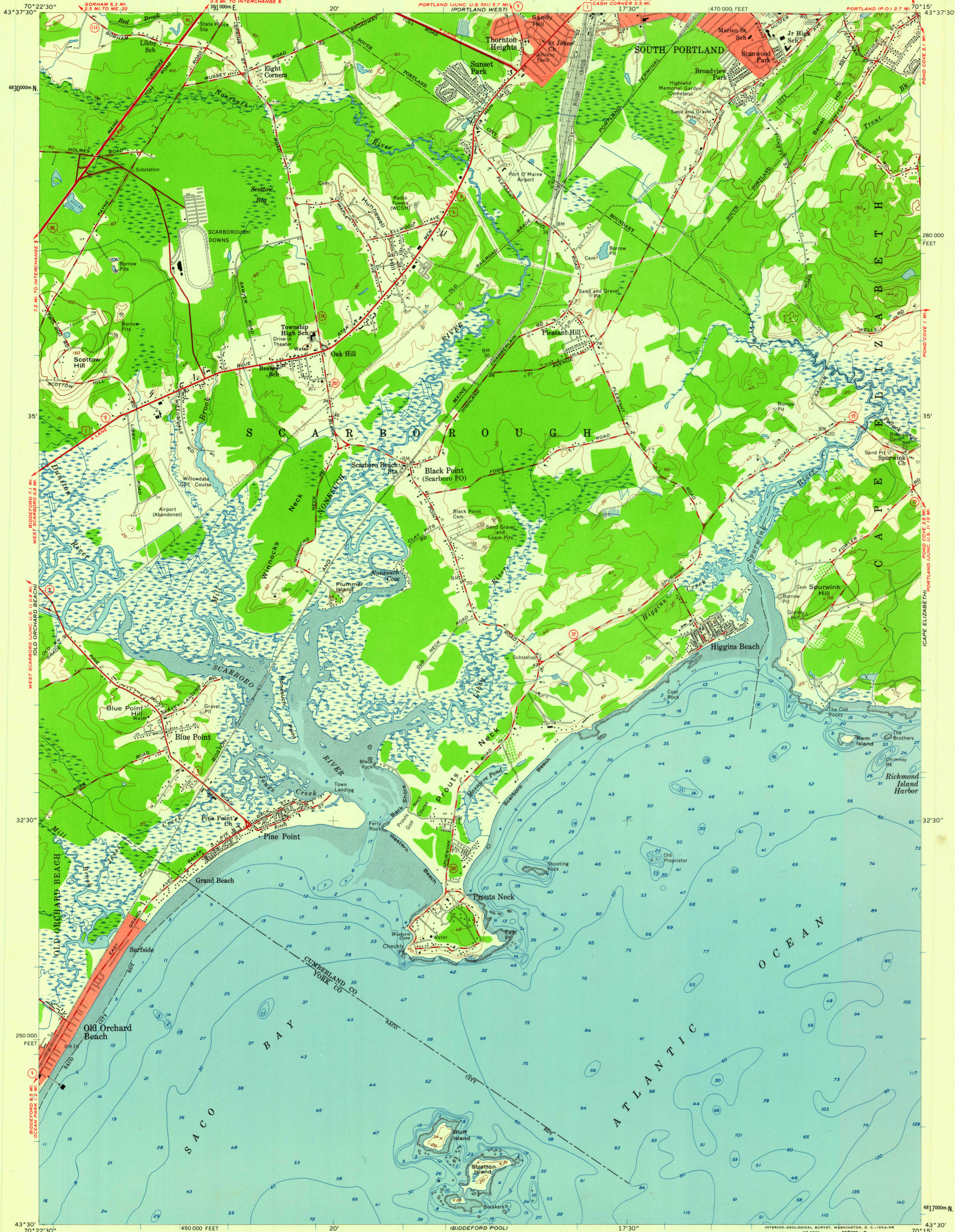


UNITED STATES
DEPARTMENT OF THE INTERIOR
GEOLOGICAL SURVEY

UNITED STATES
DEPARTMENT OF THE ARMY
CORPS OF ENGINEERS

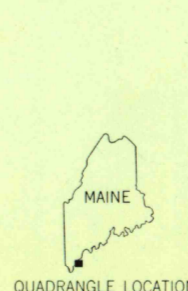
PROUTS NECK QUADRANGLE
MAINE
7.5 MINUTE SERIES (TOPOGRAPHIC)
SE/4 PORTLAND 15' QUADRANGLE



Mapped by the Army Map Service
Edited and published by the Geological Survey
Control by USGS and USC&GS
Culture and drainage in part compiled from aerial photographs
taken 1943. Topography by planetable surveys 1944
Culture revised by the Geological Survey 1957
Hydrography compiled from USC&GS chart 231 (1954)
Polyconic projection. 1927 North American datum
10,000-foot grid based on Maine coordinate system, west zone
1000-meter Universal Transverse Mercator grid ticks,
zone 19, shown in blue
Red tint indicates areas in which only
landmark buildings are shown
Unchecked elevations are shown in brown

TRUE NORTH
MAGNETIC NORTH
APPROXIMATE MEAN
DECLINATION, 1957

SCALE 1:24,000
1 0 1000 2000 3000 4000 5000 6000 7000 FEET
1 0 1 2 3 4 5 6 7 8 9 10 KILOMETER
CONTOUR INTERVAL 20 FEET
DATUM IS MEAN SEA LEVEL
DEPTH CURVES AND SOUNDINGS IN FEET—DATUM IS MEAN LOW WATER
SHORELINE SHOWN REPRESENTS THE APPROXIMATE LINE OF MEAN HIGH WATER
THE MEAN RANGE OF TIDE IS APPROXIMATELY 8.8 FEET
THIS MAP COMPLIES WITH NATIONAL MAP ACCURACY STANDARDS
FOR SALE BY U. S. GEOLOGICAL SURVEY, WASHINGTON 25, D. C.
A FOLDER DESCRIBING TOPOGRAPHIC MAPS AND SYMBOLS IS AVAILABLE ON REQUEST



ROAD CLASSIFICATION
Heavy-duty ——— Light-duty ———
Medium-duty ——— Unimproved dirt ———
Interstate Route U.S. Route State Route

PROUTS NECK, MAINE
SE/4 PORTLAND 15' QUADRANGLE
N4300—W7015/7.5

U.S.G.S.
FILE COPY
TOPOGRAPHIC DIVISION

MAY 26 1959

2570