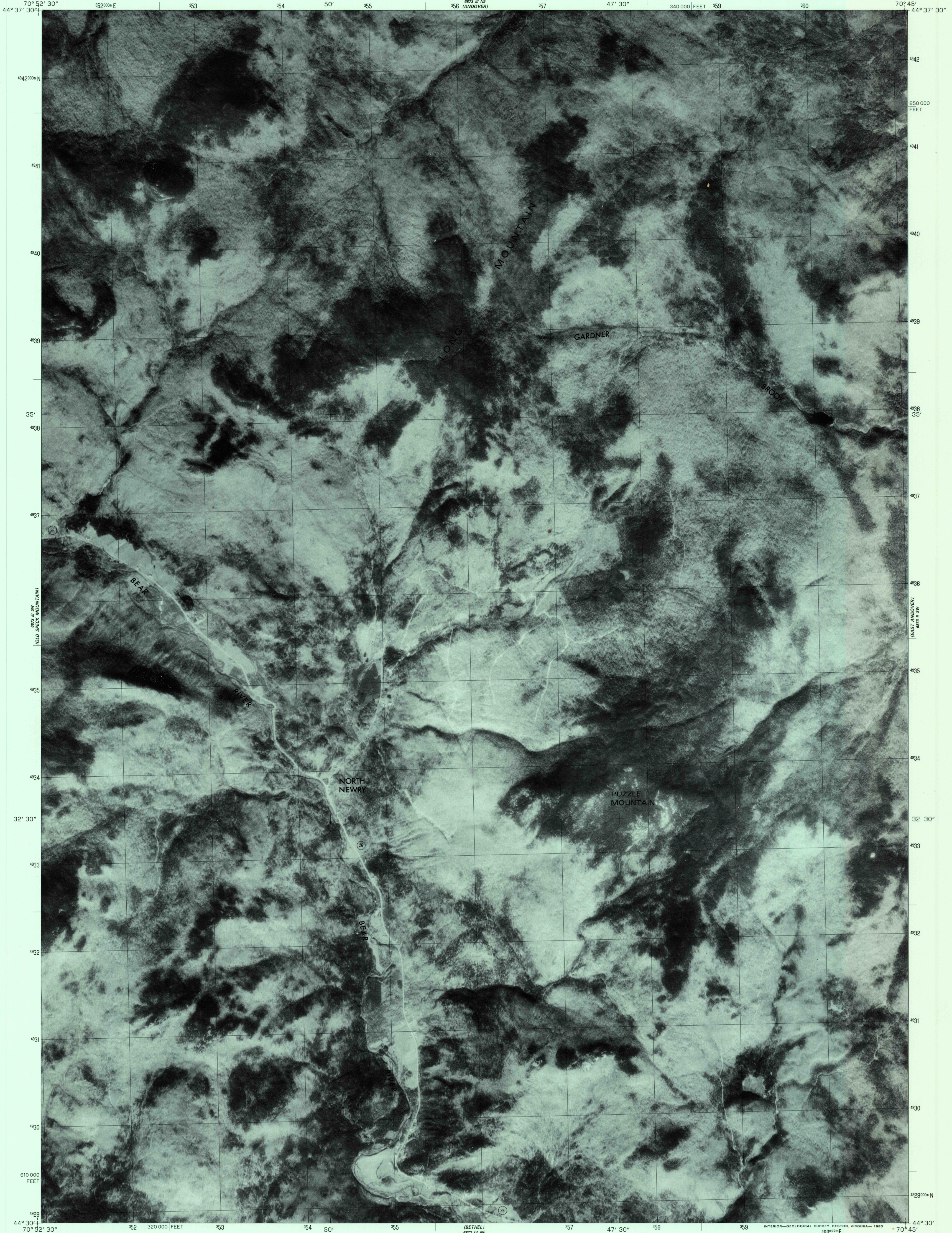
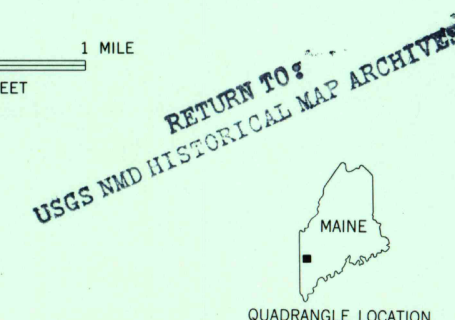
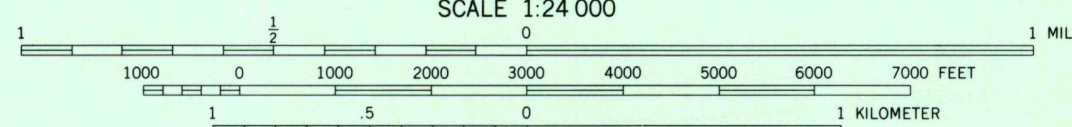
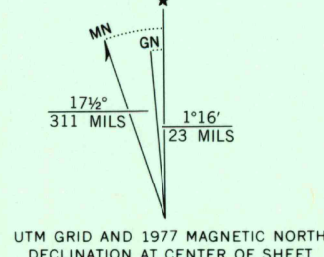


UNITED STATES
DEPARTMENT OF THE INTERIOR
GEOLOGICAL SURVEY

PUZZLE MOUNTAIN QUADRANGLE
MAINE
7.5 MINUTE SERIES ORTHOPHOTOQUAD



Produced and published by the Geological Survey
Orthophoto prepared from 1:80,000-scale
aerial photograph taken October 31, 1977
Projection and 10,000-foot grid ticks: Maine
coordinate system, west zone (transverse Mercator)
1000-meter Universal Transverse Mercator grid,
zone 19. 1927 North American Datum
To place on the predicted North American Datum 1983
move the projection lines 3 meters south and
40 meters west as shown by dashed corner ticks
Photomaged rectified by automatic correlation



PRINCIPAL NUMBERED HIGHWAYS
Interstate Route U. S. Route State Route

This quadrangle area also covered by SE quarter
of Old Speck Mountain 1:62,500-scale topographic map

PUZZLE MOUNTAIN, MAINE
N4430-W7045/7.5

1977

DMA 6873 III SE-SERIES V011

THIS MAP COMPLIES WITH NATIONAL MAP ACCURACY STANDARDS
FOR SALE BY U. S. GEOLOGICAL SURVEY, RESTON, VIRGINIA 22092