

67°15'
45°07'30"

12°30'

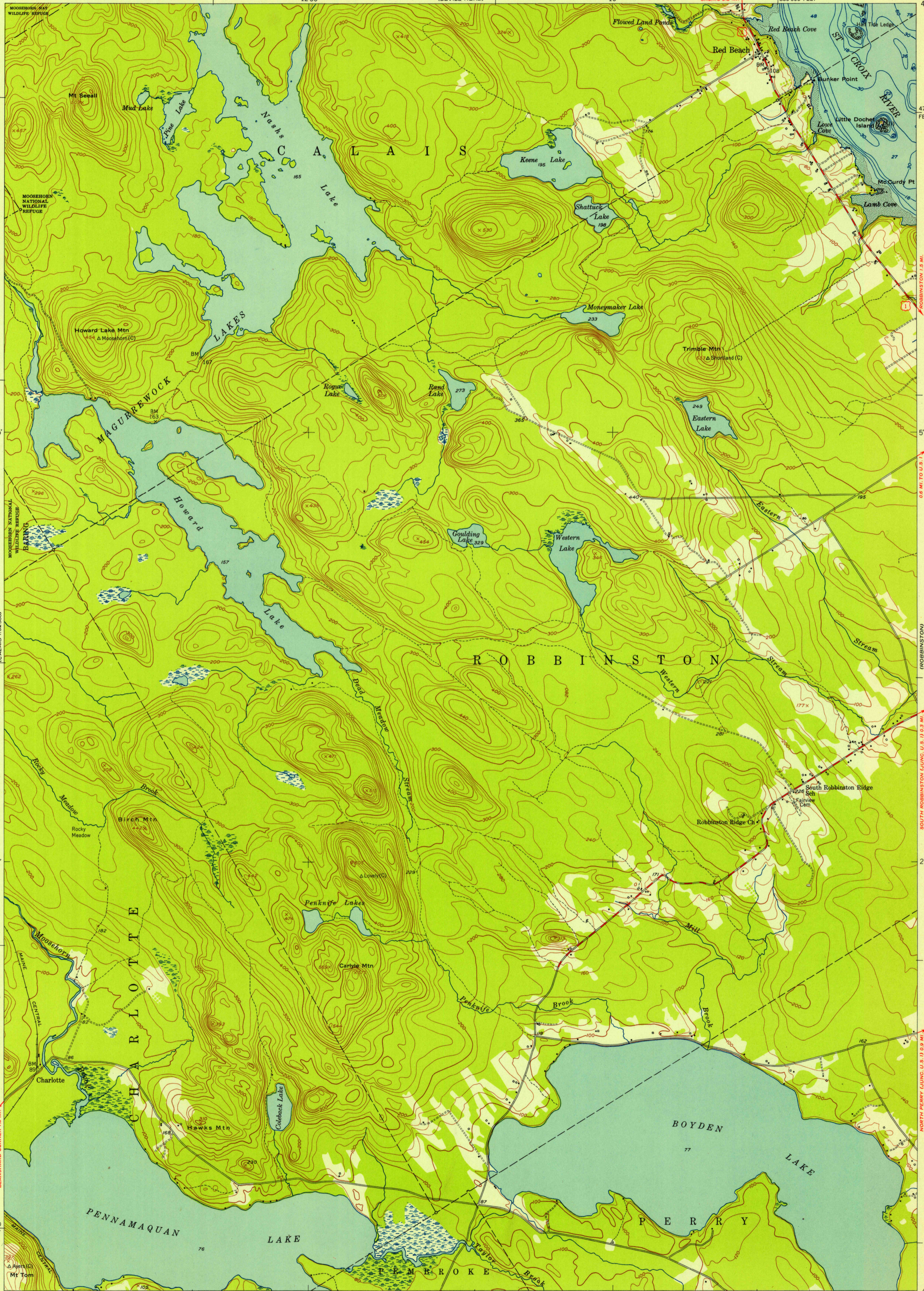
10'

1850 000 FEET

67°07'30"

45°07'30"

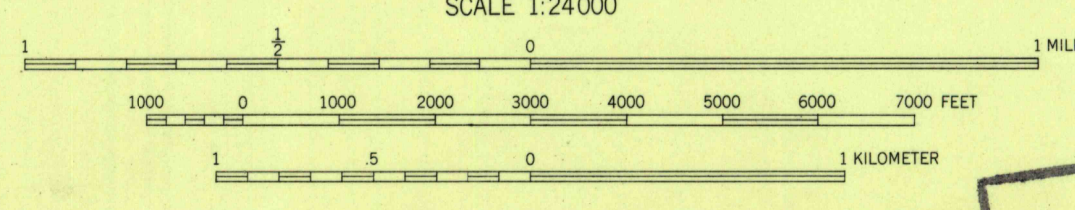
U.S.G.S.
FILE COPY
Inspection and Holdings



Mapped by the U. S. Coast & Geodetic Survey
Edited and published by the Geological Survey
Control by USC&GS (C), International Boundary Commission (I),
and USGS

Topography from aerial photographs by multiplex methods
Aerial photographs taken 1946. Field check 1949
Hydrography from surveys dated 1887, and supplementary information
Polyconic projection. 1927 North American datum
10,000-foot grid based on Maine coordinate system,
east zone

21'
TRUE NORTH
APPROXIMATE MEAN
DECLINATION, 1949



CONTOUR INTERVAL 20 FEET
DATUM IS MEAN SEA LEVEL
DEPTH CURVES AND SOUNDINGS IN FEET-DATUM IS MEAN LOW WATER
SHORELINE SHOWN REPRESENTS THE APPROXIMATE LINE OF MEAN HIGH WATER
THE AVERAGE RANGE OF TIDE IS APPROXIMATELY 19 FEET

THIS MAP COMPLIES WITH NATIONAL MAP ACCURACY STANDARDS
FOR SALE BY U. S. GEOLOGICAL SURVEY, WASHINGTON 25, D. C.
A FOLDER DESCRIBING TOPOGRAPHIC MAPS AND SYMBOLS IS AVAILABLE ON REQUEST

U.S.G.S.
FILE COPY
Inspection and Holdings

ROAD CLASSIFICATION
Heavy-duty 4 LANE 6 LANE Light-duty
Medium-duty 4 LANE 6 LANE Unimproved dirt
U. S. Route State Route

RED BEACH, ME.
SW/4 ROBBINSON 15' QUADRANGLE
N4500-W6707.5/7.5

1949