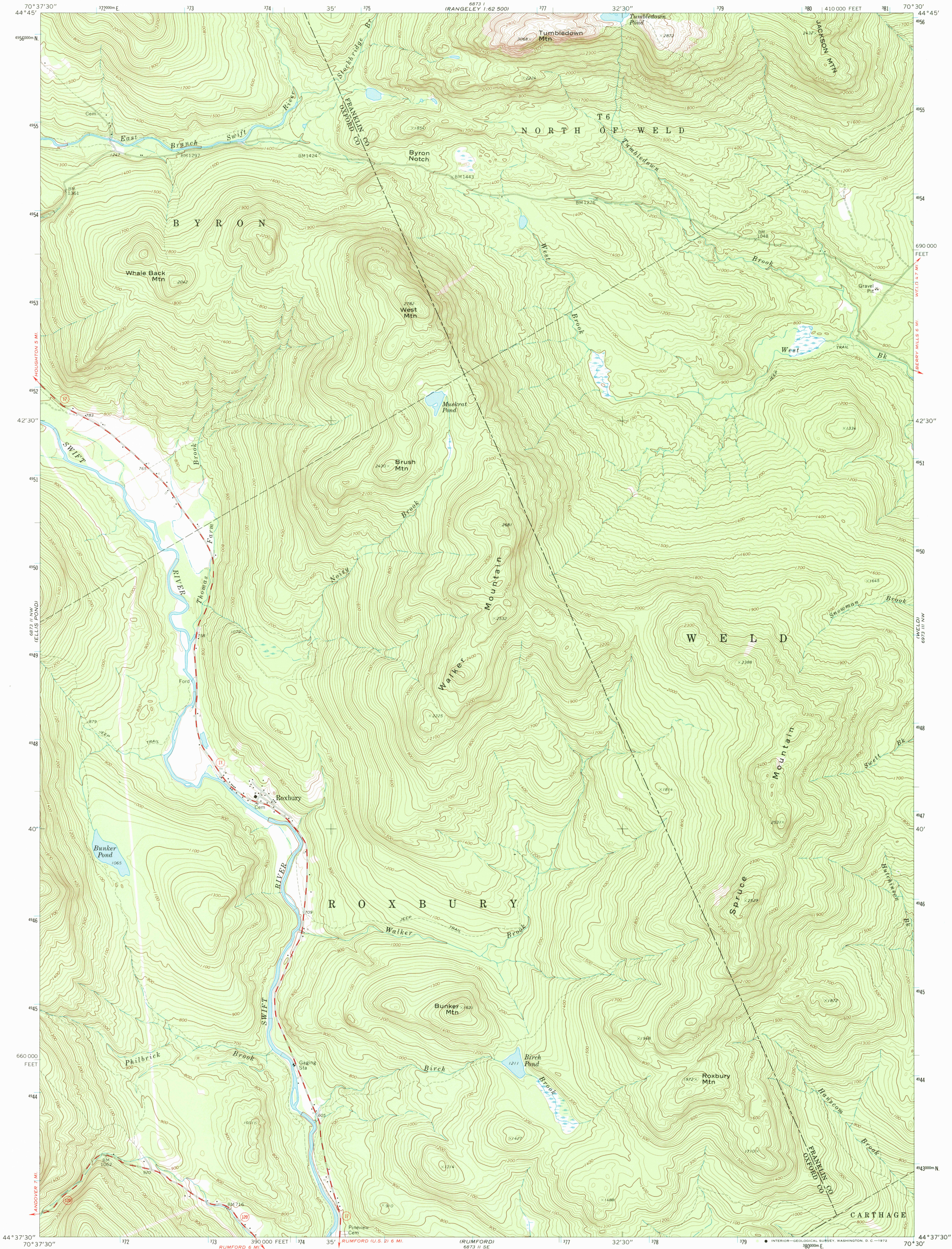


UNITED STATES
DEPARTMENT OF THE INTERIOR
GEOLOGICAL SURVEY

ROXBURY QUADRANGLE
MAINE
7.5 MINUTE SERIES (TOPOGRAPHIC)
NE/4 RUMFORD 15' QUADRANGLE

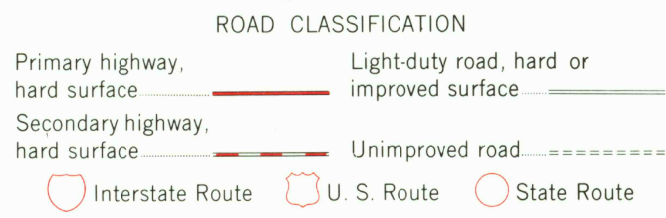
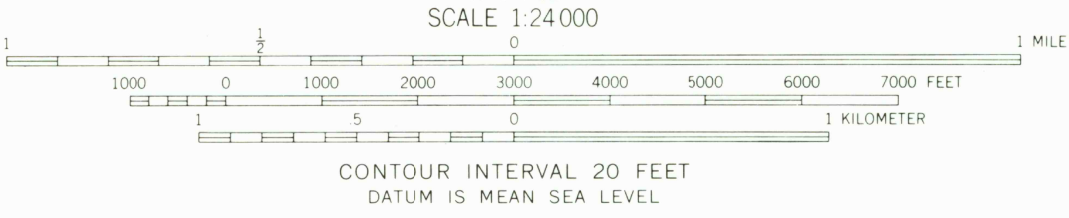
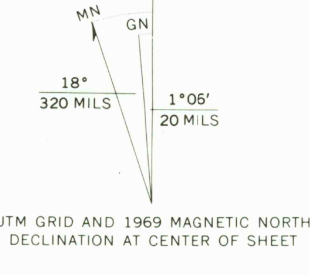


Mapped, edited, and published by the Geological Survey
Control by USGS and USC&GS

Topography by photogrammetric methods from aerial
photographs taken 1965. Field checked 1969

Polyconic projection. 1927 North American datum
10,000-foot grid based on Maine coordinate system, west zone
1000-meter Universal Transverse Mercator grid ticks,
zone 19, shown in blue

Fine red dashed lines indicate selected fence and field lines where
generally visible on aerial photographs. This information
is unchecked



ROXBURY, MAINE
NE/4 RUMFORD 15' QUADRANGLE
N4437.5—W7030/7.5

1969

AMS 6873 II NE—SERIES V811