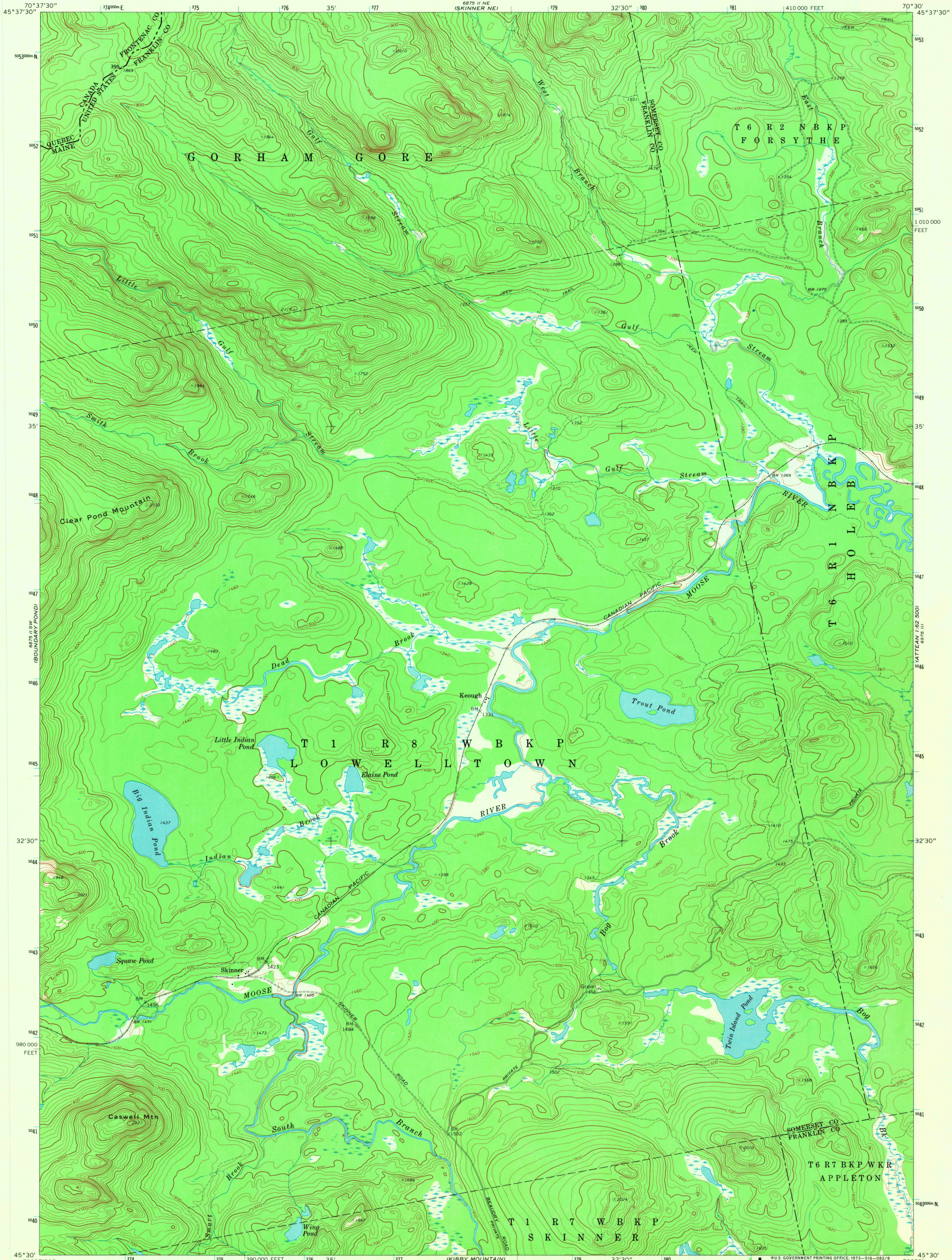
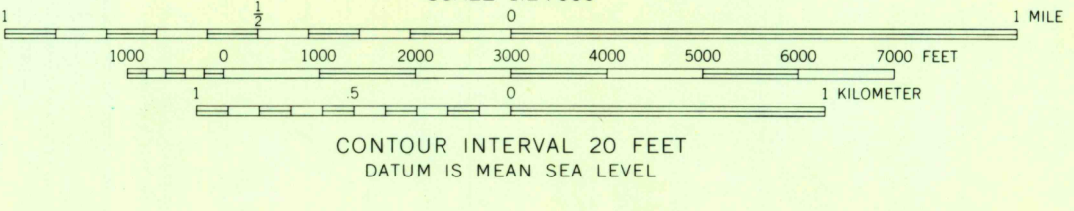
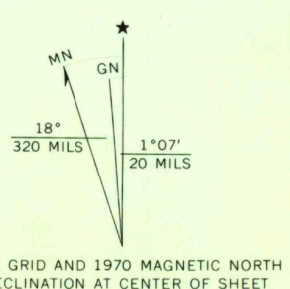


6875 II SE-SERIES
ATTEN 1:62,500



Mapped, edited, and published by the Geological Survey
Control by USGS, USC&GS, and International Boundary Commission
Topography by photogrammetric methods from aerial photographs
taken 1966. Field checked 1970
Polyconic projection. 1927 North American datum
10,000-foot grid based on Maine coordinate system, west zone
1000-meter Universal Transverse Mercator grid ticks,
zone 19, shown in blue



ROAD CLASSIFICATION

Light-duty road, all weather	Unimproved road, fair or dry weather
Improved surface	
Trails	



USGS
Historical File
Topographic Division

SKINNER, MAINE-QUEBEC
SE/4 SKINNER 15' QUADRANGLE
N4530-W7030/7.5
1970
AMS 6875 II SE-SERIES V811

THIS MAP COMPLIES WITH NATIONAL MAP ACCURACY STANDARDS
FOR SALE BY U.S. GEOLOGICAL SURVEY, WASHINGTON, D. C. 20242
A FOLDER DESCRIBING TOPOGRAPHIC MAPS AND SYMBOLS IS AVAILABLE ON REQUEST

SEP 11 1973
Hoen
3000
50 plan