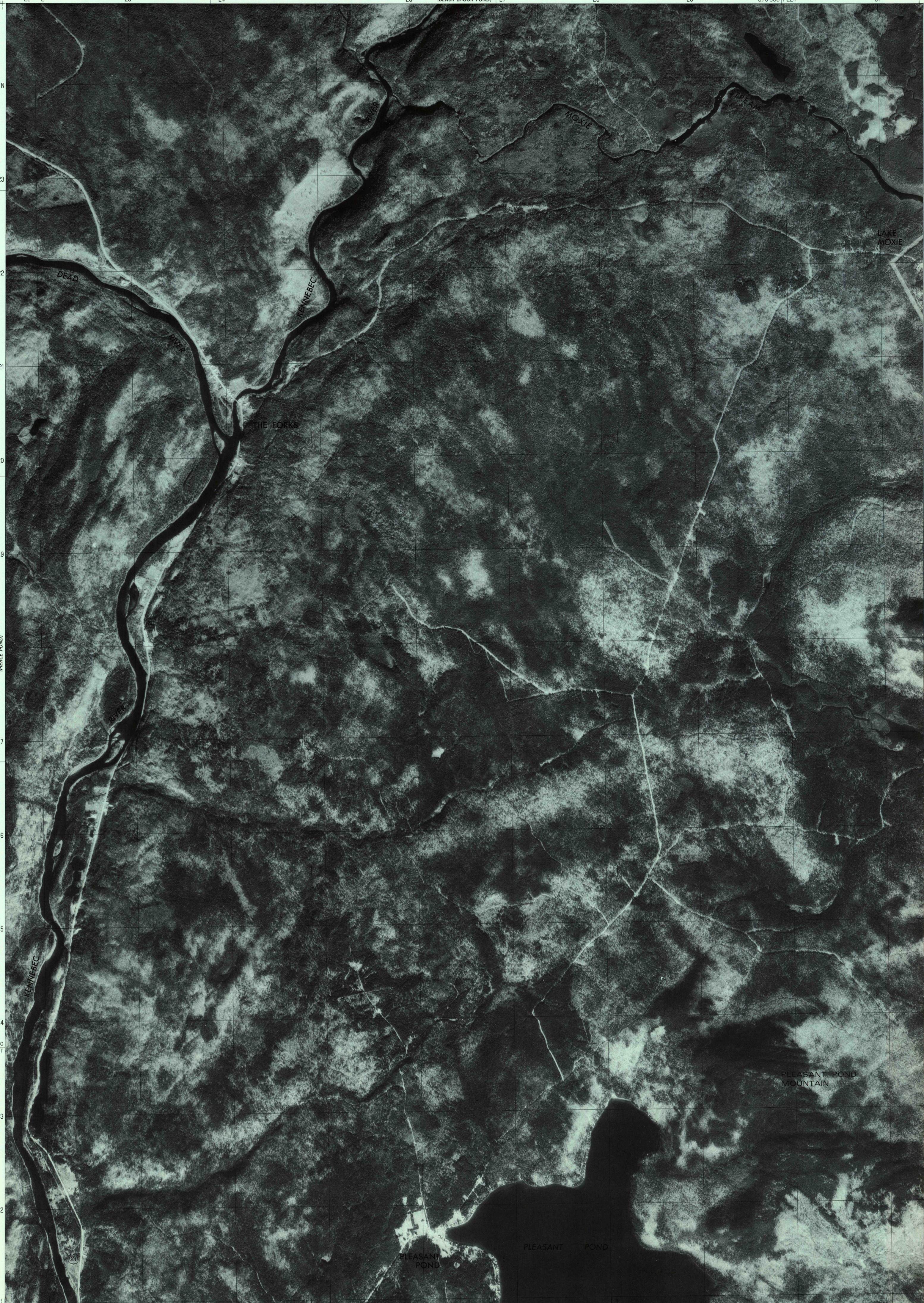
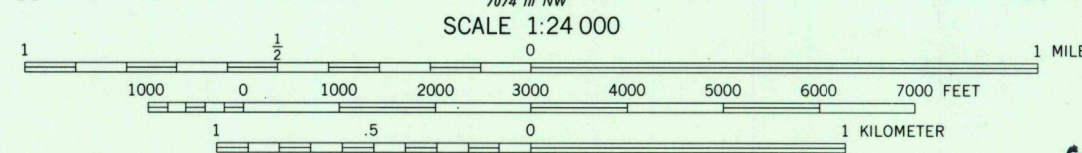
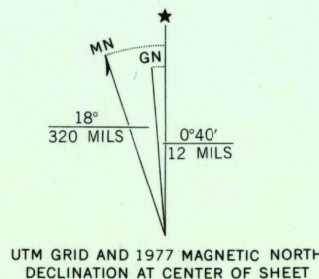


UNITED STATES  
DEPARTMENT OF THE INTERIOR  
GEOLOGICAL SURVEY

THE FORKS QUADRANGLE  
MAINE  
7.5 MINUTE SERIES ORTHOPHOTOQUAD



Produced and published by the Geological Survey  
Orthophotograph prepared from 1:80,000-scale  
aerial photograph taken November 1, 1977  
Projection and 10,000-foot grid ticks: Maine  
coordinate system, west zone (transverse Mercator)  
1000-meter Universal Transverse Mercator grid,  
zone 19. 1927 North American Datum  
To place on the predicted North American Datum 1983  
move the projection lines to position shown by  
dashed corner ticks  
Photomicroscopy rectified by automatic correlation



USGS  
HISTORICAL FILE  
NATIONAL MAPPING DIVISION



PRINCIPAL NUMBERED HIGHWAYS  
Interstate Route U. S. Route State Route

This quadrangle area also covered by SW quarter  
of The Forks 1:62,500-scale topographic map

THE FORKS, MAINE  
N4515-W6952.5/7.5

1977

DMA 7074 IV SW-SERIES V011

THIS MAP COMPLIES WITH NATIONAL MAP ACCURACY STANDARDS  
FOR SALE BY U. S. GEOLOGICAL SURVEY, RESTON, VIRGINIA 22092

JUN 8 1981  
850