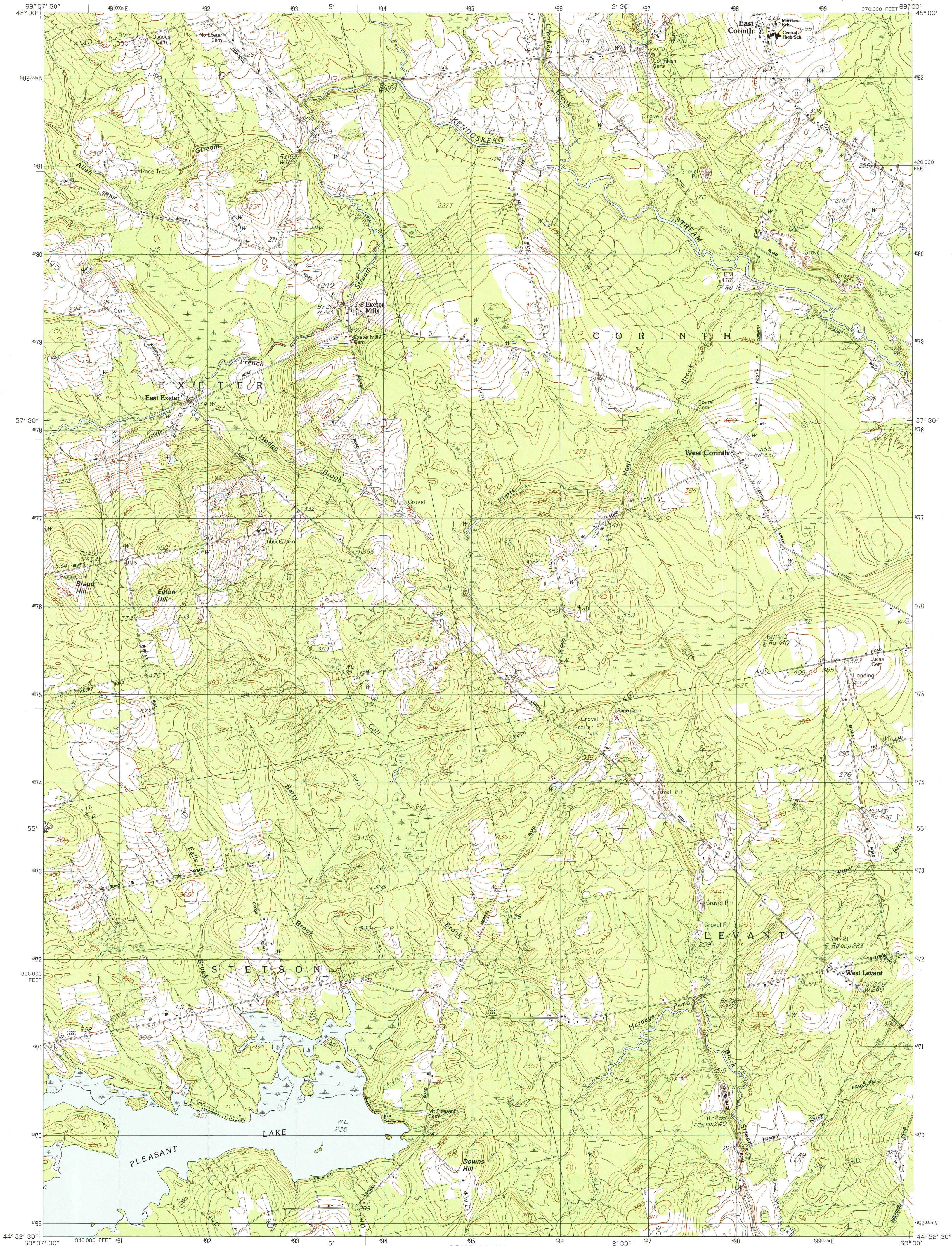


UNITED STATES
DEPARTMENT OF THE INTERIOR
GEOLOGICAL SURVEY

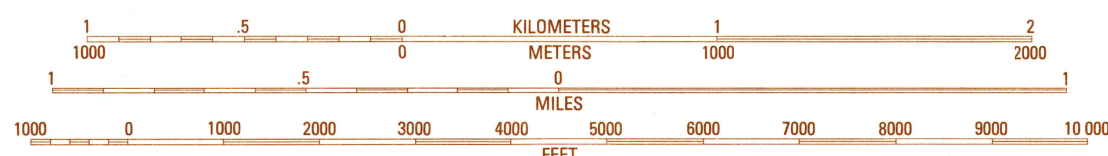
WEST CORINTH QUADRANGLE
MAINE—PENOBSCOT CO.
7.5 MINUTE SERIES (TOPOGRAPHIC)



PRODUCED BY THE UNITED STATES GEOLOGICAL SURVEY
CONTROL BY: USGS, NOS/NOAA
COMPILED FROM AERIAL PHOTOGRAPHS TAKEN: 1976
FIELD CHECKED: 1979 MAP EDITED: 1982
PROJECTION: TRANSVERSE MERCATOR
GRID: 1000-METER UNIVERSAL TRANSVERSE MERCATOR ZONE 19
10,000-FOOT STATE GRID TICKS: MAINE, EAST ZONE
HORIZONTAL DATUM: 1983 WEST
1982 MAGNETIC NORTH DECLINATION: 18°30' EAST
VERTICAL DATUM: NATIONAL GEODETIC VERTICAL DATUM OF 1929
To place on the predicted North American Datum of 1983, move
the projection lines as shown by dashed corner ticks
(3 meters south and 43 meters west)
There may be private inholdings within the boundaries of any
Federal and State Reservations shown on this map
Map photoinspected 1988
No major culture or drainage changes observed

PROVISIONAL MAP
Produced from original
manuscript drawings. Informa-
tion shown as of date of
field check

SCALE 1:24 000



CONTOUR INTERVAL 10 FEET

To convert meters to feet multiply by 3.2808
To convert feet to meters multiply by .3048

THIS MAP COMPLIES WITH NATIONAL MAP ACCURACY STANDARDS
FOR SALE BY U.S. GEOLOGICAL SURVEY
DENVER, COLORADO 80225, OR RESTON, VIRGINIA 22092



QUADRANGLE LOCATION

1	2	3	1	Garland
2			2	Charleston
3			3	Bradford
4			4	Stetson
5			5	Kenduskeag
6			6	Plymouth
7			7	Carmel
8			8	Heron

ADJOINING 7.5 QUADRANGLE NAMES

ROAD LEGEND

Improved Road
Unimproved Road
Trail
Interstate Route
U. S. Route
State Route

WEST CORINTH, MAINE
PROVISIONAL EDITION 1982
PHOTOINSPECTED 1988
44069-H1-TF-024