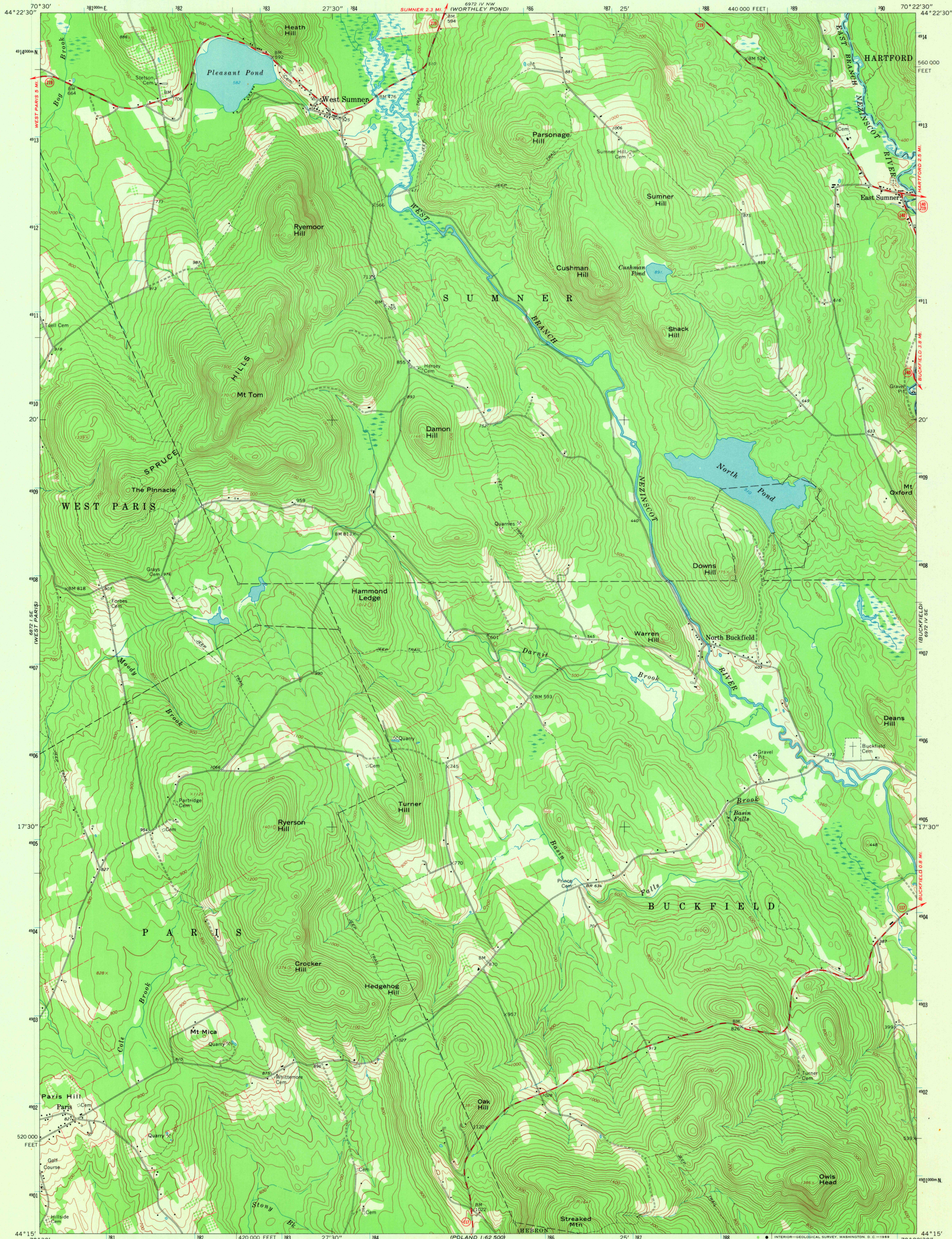
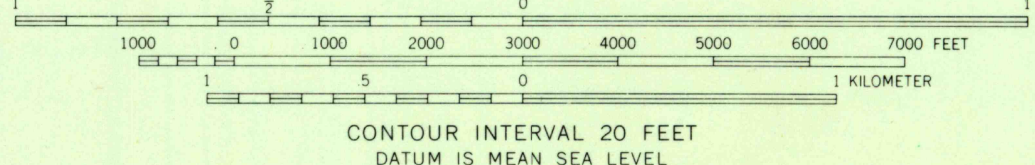
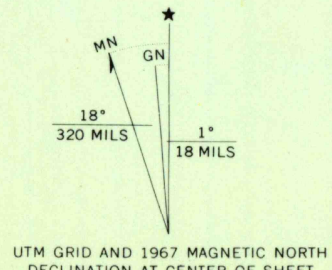


UNITED STATES  
DEPARTMENT OF THE INTERIOR  
GEOLOGICAL SURVEY

WEST SUMNER QUADRANGLE  
MAINE—OXFORD CO.  
7.5 MINUTE SERIES (TOPOGRAPHIC)  
SW/4 BUCKFIELD 15' QUADRANGLE



Mapped, edited, and published by the Geological Survey  
Control by USGS and USC&GS  
Topography by photogrammetric methods from aerial photographs  
taken 1963. Field checked 1967  
Polyconic projection. 1927 North American datum  
10,000-foot grid based on Maine coordinate system, west zone  
1000-meter Universal Transverse Mercator grid ticks,  
zone 19, shown in blue  
Fine red dashed lines indicate selected fence and field lines where  
generally visible on aerial photographs. This information is unchecked



ROAD CLASSIFICATION  
Secondary highway, all weather, Light-duty road, all weather,  
hard surface  
Unimproved road, fair or dry  
weather  
State Route

U.S.G.S.  
FILE COPY  
TOPOGRAPHIC DIVISION

WEST SUMNER, MAINE  
SW/4 BUCKFIELD 15' QUADRANGLE  
N4415—W7022.5/7.5  
1967  
AMS 6972 IV SW—SERIES B811

THIS MAP COMPLIES WITH NATIONAL MAP ACCURACY STANDARDS  
FOR SALE BY U.S. GEOLOGICAL SURVEY, WASHINGTON, D.C. 20242  
A FOLDER DESCRIBING TOPOGRAPHIC MAPS AND SYMBOLS IS AVAILABLE ON REQUEST

2710  
OCT 20 1969