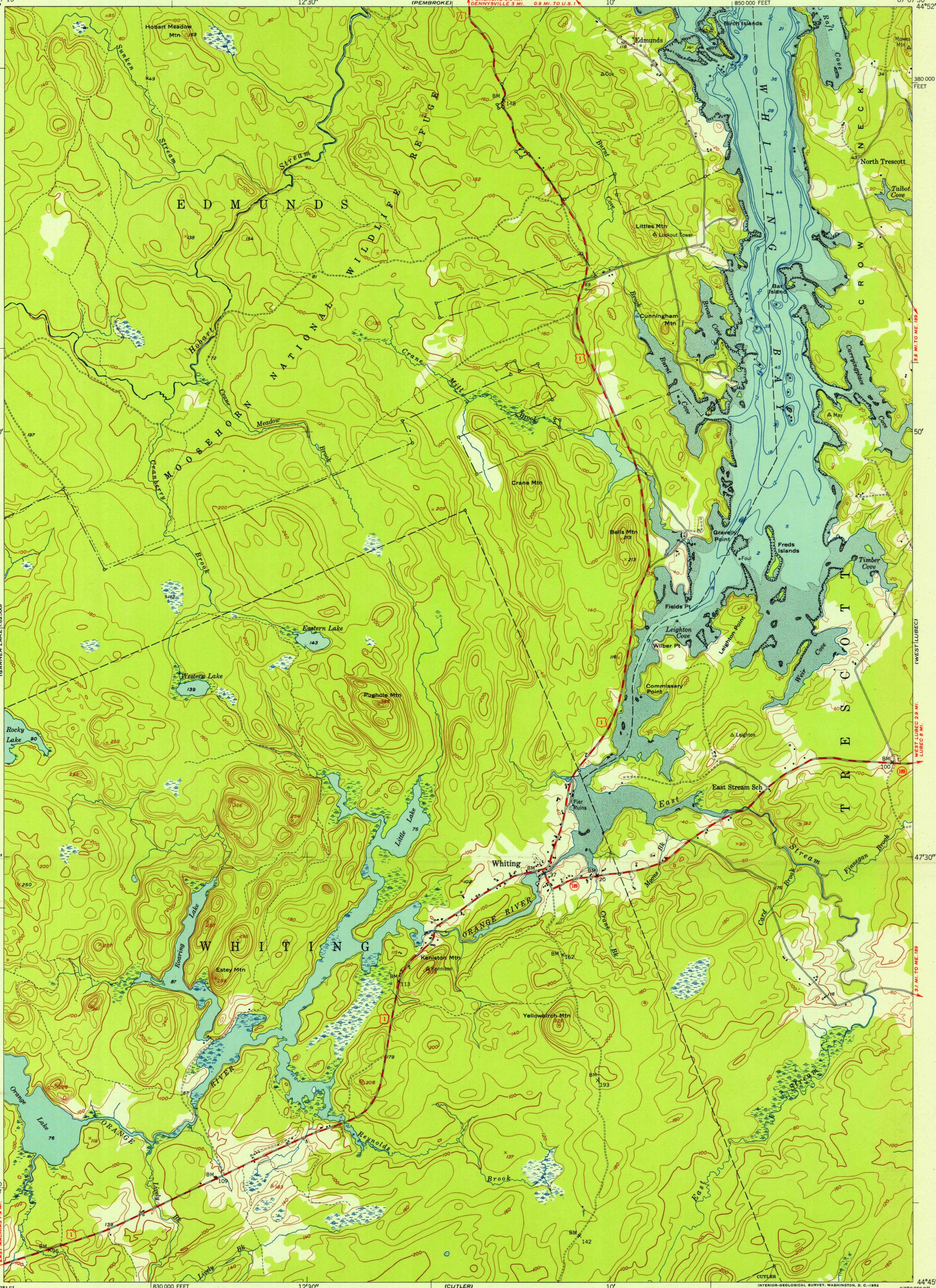
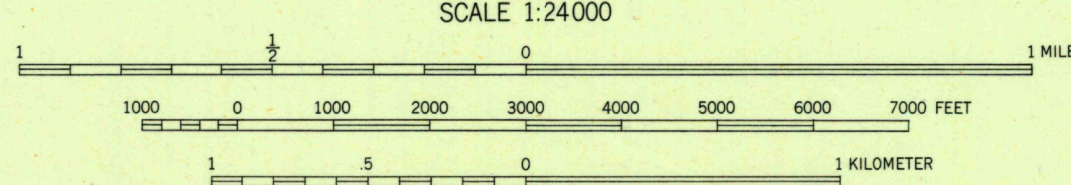
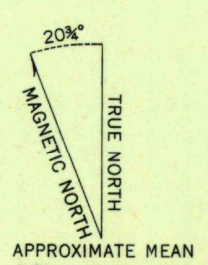


U. S. G. S.
FILE COPY
Inspection and Editing.

U. S. G. S.
FILE COPY
Inspection and Editing.



Mapped by the U. S. Coast & Geodetic Survey
Edited and published by the Geological Survey
Control by USC&GS and USGS
Topography from aerial photographs by multiplex methods
Aerial photographs taken 1946. Field check 1949
Hydrography from surveys dated 1888, and supplementary information
Polyconic projection. 1927 North American datum
10,000-foot grid based on Maine coordinate system,
east zone



CONTOUR INTERVAL 20 FEET
DATUM IS MEAN SEA LEVEL
DEPTH CURVES AND SOUNDINGS IN FEET-DATUM IS MEAN LOW WATER
SHORELINE SHOWN REPRESENTS THE APPROXIMATE LINE OF MEAN HIGH WATER
THE AVERAGE RANGE OF TIDE IS APPROXIMATELY 18 FEET
THIS MAP COMPLIES WITH NATIONAL MAP ACCURACY STANDARDS
FOR SALE BY U. S. GEOLOGICAL SURVEY, WASHINGTON 25, D. C.
A FOLDER DESCRIBING TOPOGRAPHIC MAPS AND SYMBOLS IS AVAILABLE ON REQUEST

ROAD CLASSIFICATION USC&GS T-8792
Heavy-duty 4 LANE 16 LANE Light-duty 2 LANE 16 LANE
Medium-duty 4 LANE 16 LANE Unimproved dirt =====
U. S. Route State Route

WHITING, ME.
SW/4 EASTPORT 15'X20' QUADRANGLE
N4445-W6707.5/7.5

1949