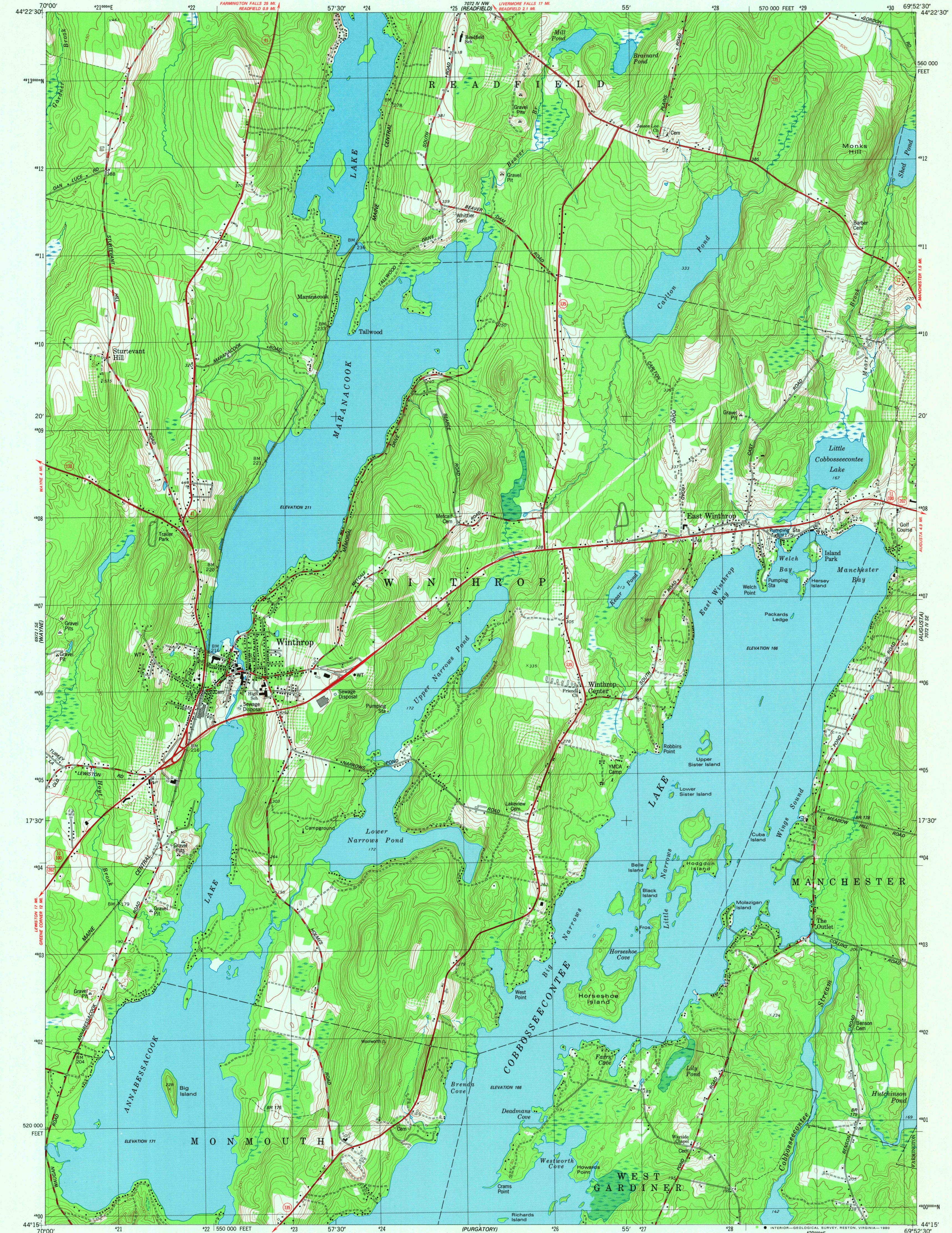
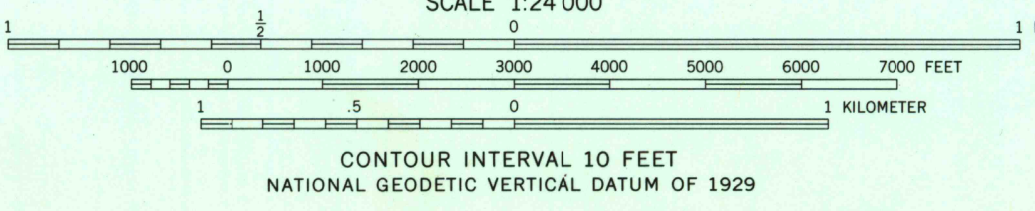
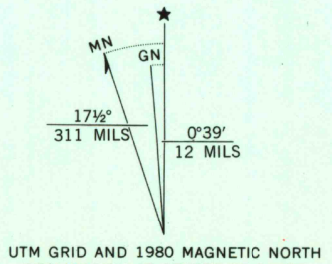


UNITED STATES  
DEPARTMENT OF THE INTERIOR  
GEOLOGICAL SURVEY

WINTHROP QUADRANGLE  
MAINE—KENNEBEC CO.  
7.5 MINUTE SERIES (TOPOGRAPHIC)  
SW/4 AUGUSTA 15' QUADRANGLE



Mapped, edited, and published by the Geological Survey  
Control by USGS, NOS/NOAA, and Maine Geodetic Survey  
Topography by photogrammetric methods from aerial photographs  
taken 1972. Field checked 1974. Map edited 1980  
Projection and 10,000-foot grid ticks. Maine coordinate  
system, west zone (transverse Mercator)  
1000-meter Universal Transverse Mercator grid, zone 19  
1927 North American Datum  
To place on the predicted North American Datum 1983  
move the projection lines 4 meters south and  
42 meters west as shown by dashed corner ticks  
Fine red dashed lines indicate selected fence and field lines where  
generally visible on aerial photographs. This information is unchecked



ROAD CLASSIFICATION  
Primary highway, hard surface  
Secondary highway, hard surface  
Unimproved road  
Interstate Route  
U.S. Route  
State Route



USGS  
Historical File  
Topographic Division

WINTHROP, MAINE  
SW/4 AUGUSTA 15' QUADRANGLE  
N4415-W6952.5/7.5  
1980

DMA 7072 IV SW—SERIES V811

THIS MAP COMPLIES WITH NATIONAL MAP ACCURACY STANDARDS  
FOR SALE BY U.S. GEOLOGICAL SURVEY, RESTON, VIRGINIA 22092  
A FOLDER DESCRIBING TOPOGRAPHIC MAPS AND SYMBOLS IS AVAILABLE ON REQUEST

SEP 23 1980