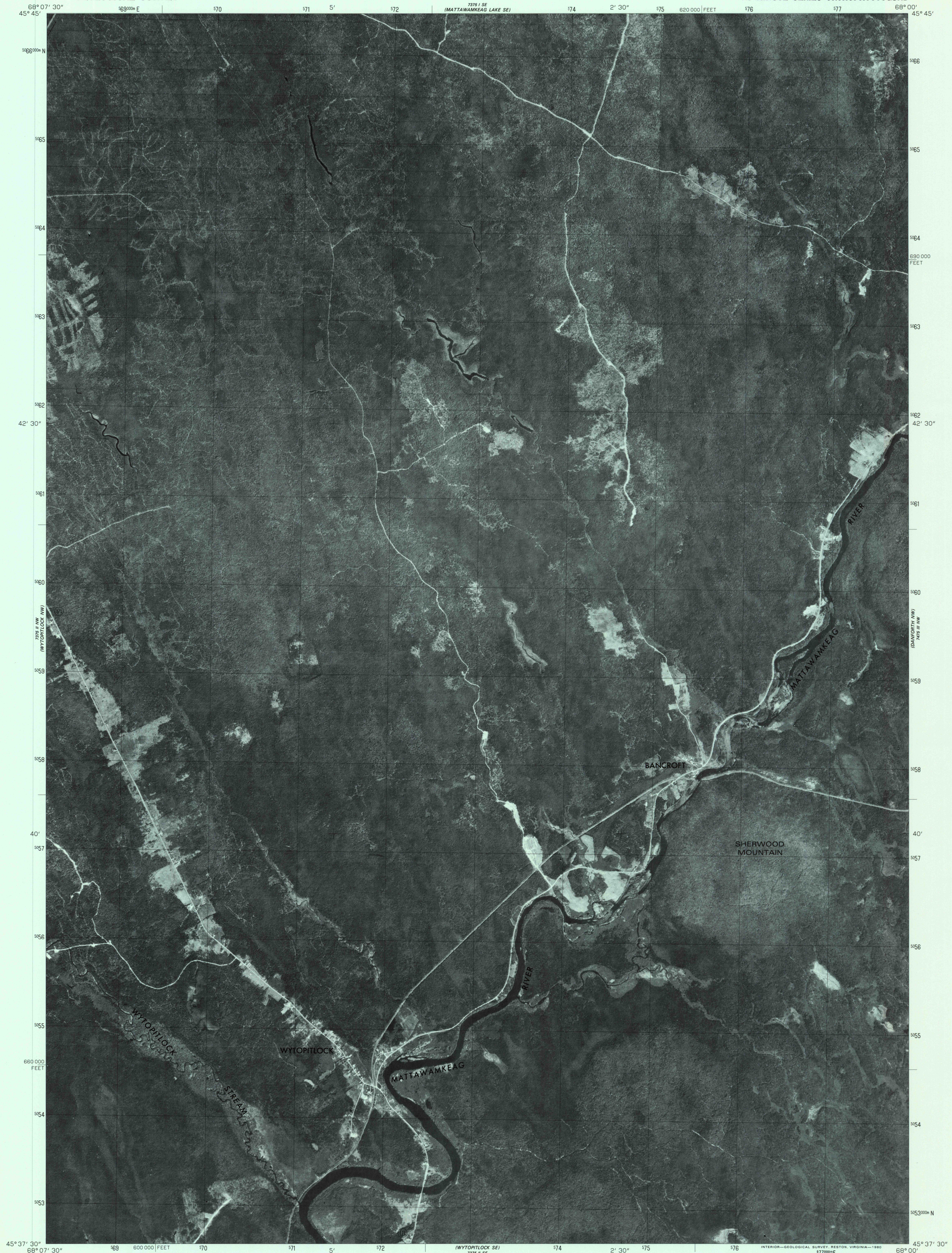


UNITED STATES
DEPARTMENT OF THE INTERIOR
GEOLOGICAL SURVEY

WYTOPITLOCK NE QUADRANGLE
MAINE
7.5 MINUTE SERIES ORTHOPHTOTOQUAD

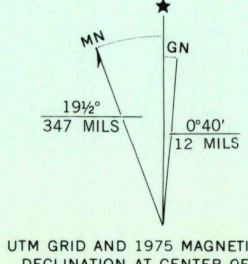


Produced and published by the Geological Survey

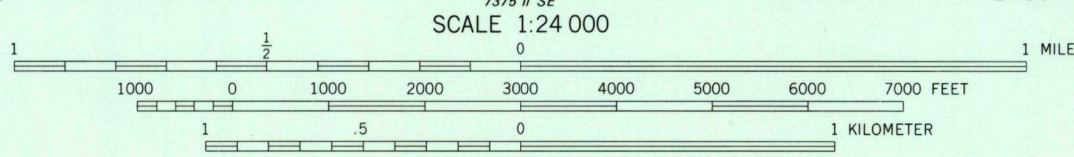
Orthophoto prepared from 1:80,000-scale aerial photograph taken May 25, 1975

Projection and 10,000-foot grid ticks: Maine coordinate system, east zone (transverse Mercator) 1000-meter Universal Transverse Mercator grid, zone 19. 1927 North American datum

Photoimagery rectified by optical scanning which may produce double or mismatched images; use the mean of image positions for map point



UTM GRID AND 1975 MAGNETIC NORTH DECLINATION AT CENTER OF SHEET



PRINCIPAL NUMBERED HIGHWAYS
 Interstate Route U.S. Route State Route



QUADRANGLE LOCATION

USGS
Historical File
Topographic Division

This quadrangle area also covered by NE quarter of Wytopitlock 1:62,500-scale topographic map

WYTOPITLOCK NE, MAINE
N4537.5-W6800/7.5
1975

THIS MAP COMPLIES WITH NATIONAL MAP ACCURACY STANDARDS FOR SALE BY U. S. GEOLOGICAL SURVEY, RESTON, VIRGINIA 22092

DMA 7375 II NE-SERIES V011

SEP 21 1980

850