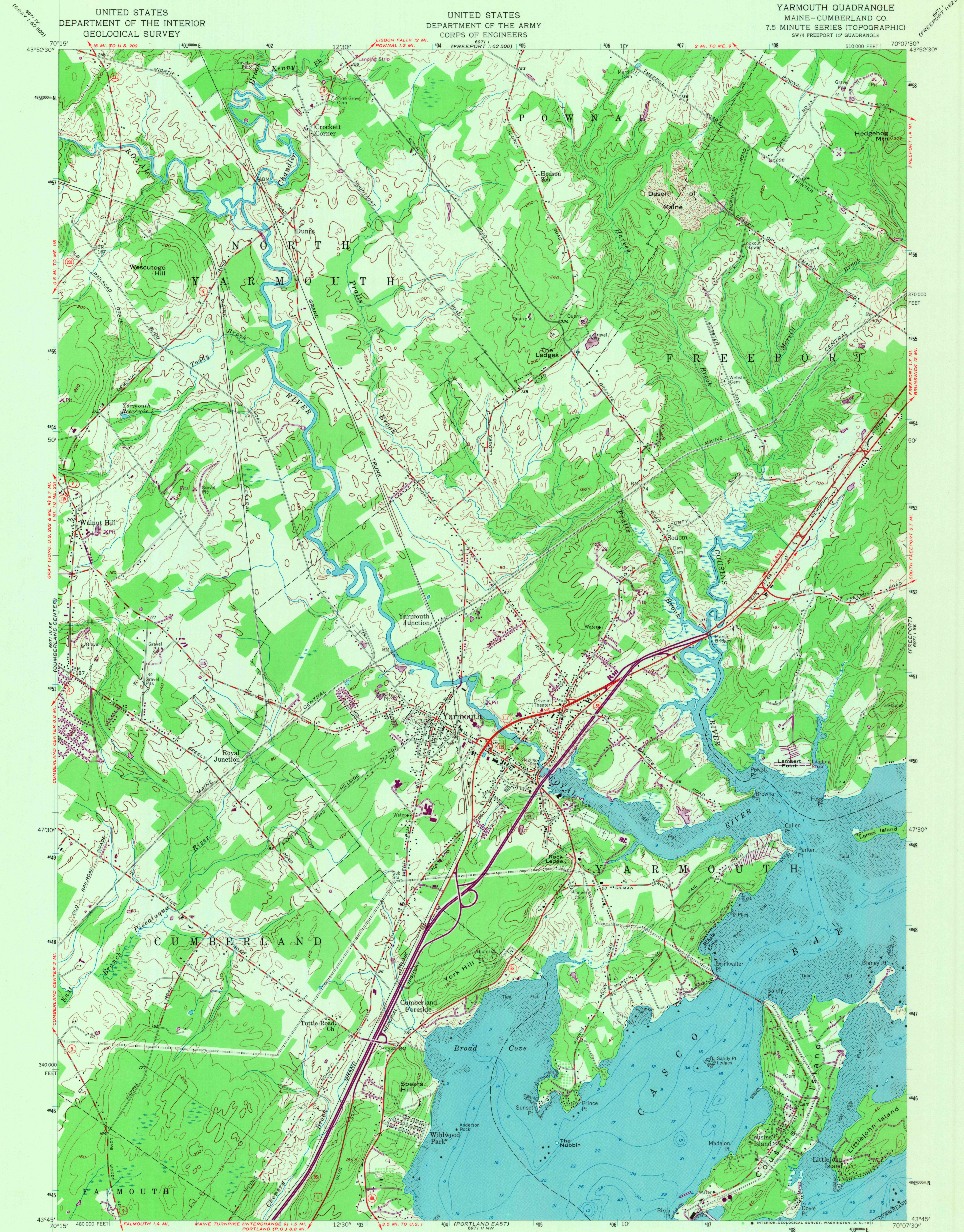


UNITED STATES
DEPARTMENT OF THE INTERIOR
GEOLOGICAL SURVEY

UNITED STATES
DEPARTMENT OF THE ARMY
CORPS OF ENGINEERS

YARMOUTH QUADRANGLE
MAINE-CUMBERLAND CO.
7.5 MINUTE SERIES (TOPOGRAPHIC)
SW 1/4 FREEPORT 15' QUADRANGLE



Map by the Army Map Service
Edited and published by the Geological Survey

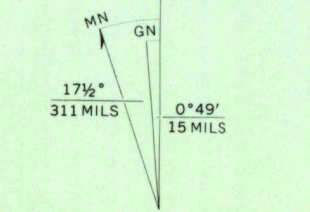
Control by USGS, USC&GS, and USCE

Culture and drainage in part compiled from aerial photographs
taken 1942. Field check 1944. Topography from USGS
1:62,500-scale map of Freeport 15 minute quadrangle, surveyed 1941
Culture revised by the Geological Survey 1957

Hydrography compiled from USC&GS chart 315 (1955),

Polyconic projection. 1927 North American datum
10,000-foot grid based on Maine coordinate system, west zone
1000-meter Universal Transverse Mercator grid ticks,
zone 19, shown in blue

Unchecked elevations are shown in brown



SCALE 1:24,000

CONTOUR INTERVAL 20 FEET

DATUM IS MEAN SEA LEVEL

DEPTH CURVES AND SOUNDINGS IN FEET-DATUM IS MEAN LOW WATER

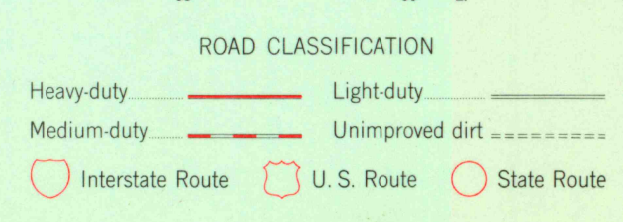
SHORELINE SHOWN REPRESENTS THE APPROXIMATE LINE OF MEAN HIGH WATER

THE MEAN RANGE OF TIDE IS APPROXIMATELY 9 FEET

FOR SALE BY U.S. GEOLOGICAL SURVEY, WASHINGTON, D. C. 20242

A FOLDER DESCRIBING TOPOGRAPHIC MAPS AND SYMBOLS IS AVAILABLE ON REQUEST

Revisions shown in purple compiled by the Geological
Survey from aerial photographs taken 1970. This
information not field checked



YARMOUTH, MAINE
SW 1/4 FREEPORT 15' QUADRANGLE
N 4345-W 7007.5/7.5

1957
PHOTOREVISED 1970
AMS 6971 1 SW-SERIES V811

HISTORICAL FILE
TOPOGRAPHIC DIVISION