

U. S. G. S.
FILE COPY
Inspection and Editing.

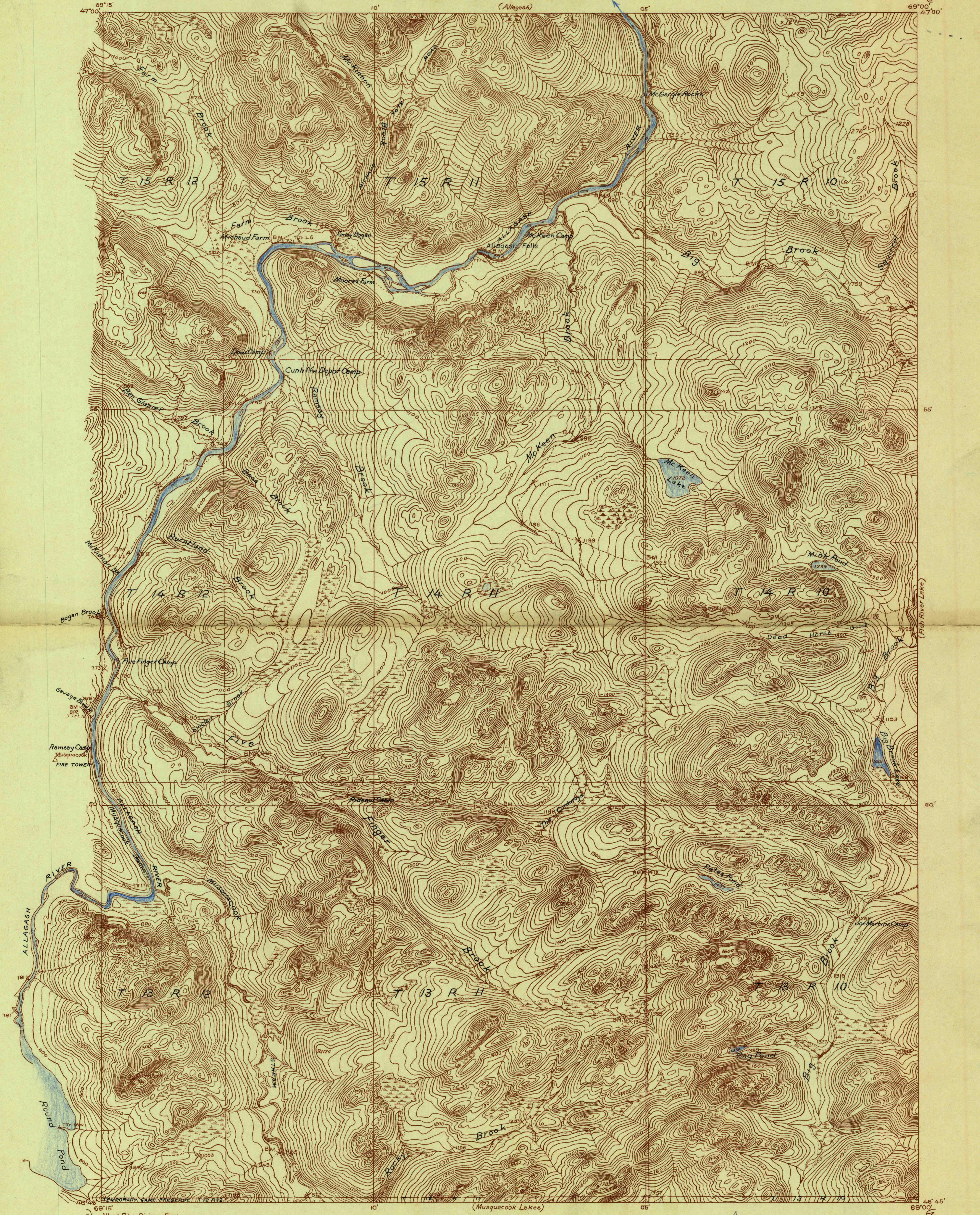
DEPARTMENT OF THE INTERIOR
U. S. GEOLOGICAL SURVEY

STATE OF MAINE
PUBLIC UTILITIES COMMISSION
ALBERT J. STEARNS, CHAIRMAN
HERBERT W. TRAFTON, ALBERT GREENLAW, COMMISSIONERS
(Allagash)

MAINE
(ARROOSTOOK COUNTY)
ALLAGASH FALLS QUADRANGLE

Advance sheet.
Subject to correction.

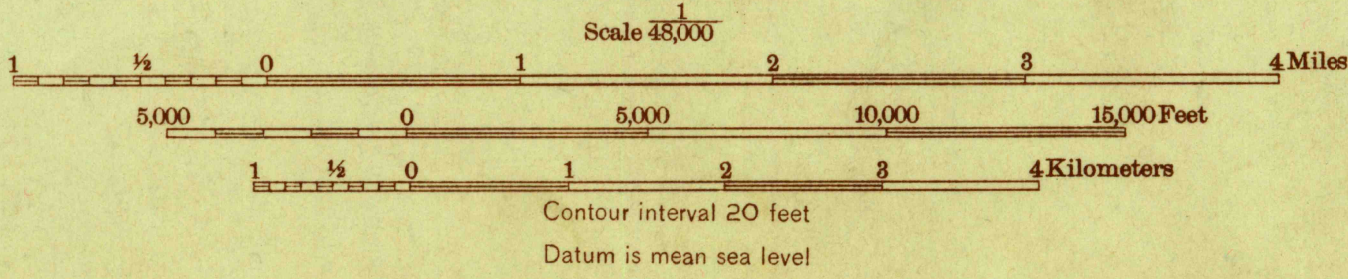
69°00' (St. Francis)



Albert Pike, Division Engineer
Topography by W.F. Chenuit, S.L. Parker, J.O. Kilmartin,
H.J. McMillen, E.H. Cummings and W.E. Bishop
Culture and drainage in part compiled from aerial photographs
taken by Air Corps, U. S. Army
Control by U. S. Geological Survey
Surveyed in 1931-1932



APPROXIMATE MEAN
DECLINATION, 1932



Contour interval 20 feet
Datum is mean sea level

Polyconic projection. North American datum

ALLAGASH FALLS, ME.

FILE COPY

RETURN TO CENTRAL FILES

FILE COPY