

RETAINED COPY

This sheet must not be taken from  
the file without an order from the  
U.S.G.S. Topographic Engineer.

**U.S.G.S. Topographic Engineer.**  
**FILE COPY**  
Inspection and Editing.

# TOPOGRAPHIC FILES

DEPARTMENT OF THE INTERIOR  
U. S. GEOLOGICAL SURVEY

888-N-III-E/2 - PART OF  
WAR DEPARTMENT  
CORPS OF ENGINEERS, U. S. ARMY

Advance sheet  
Subject to correction

MAINE  
SKINNER QUADRANGLE

70° 45' 45" 40' 35' 30' 45" 45'

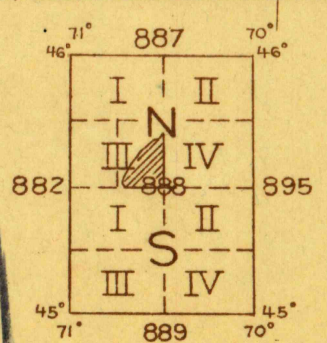
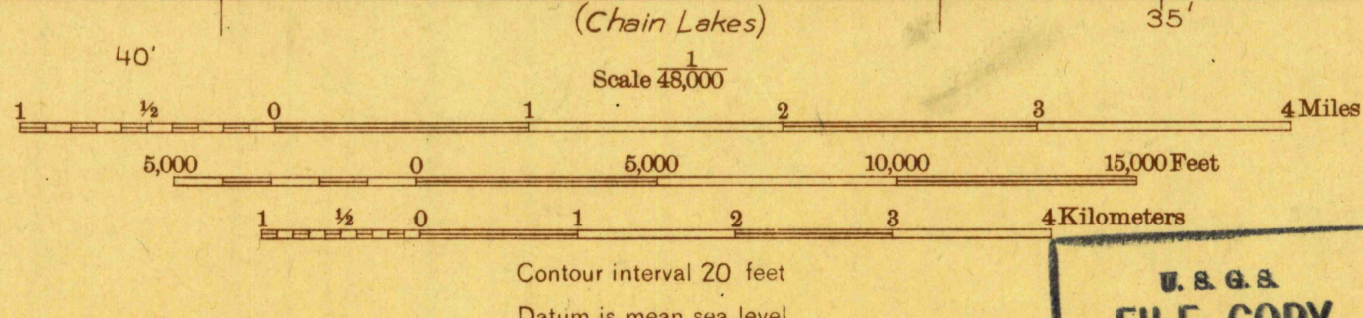
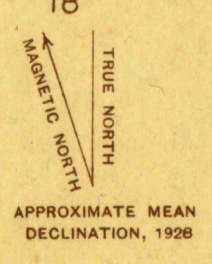
15 Miles  
14  
13  
12  
11  
10  
9  
8  
7  
6  
5  
4  
3  
2  
1  
0  
1  
2  
3  
4  
5  
6  
7  
8  
9  
10  
11  
12  
13  
14  
15

2 615 000  
YARDS



(Attean)

Albert Pike, Division Engineer  
Topography by R.H. Runyan, W.B. Brewer, Benj. Munroe Jr.,  
and International Boundary Commission  
Control by U. S. Geological Survey,  
U. S. Coast and Geodetic Survey,  
International Boundary Commission, and  
Canadian Pacific Railway  
Surveyed in 1928



Polygonic projection. North American datum  
5000 yard grid based upon U. S. zone system, A

**U.S.G.S.**  
**FILE COPY**  
Inspection and Editing.

SKINNER, ME.