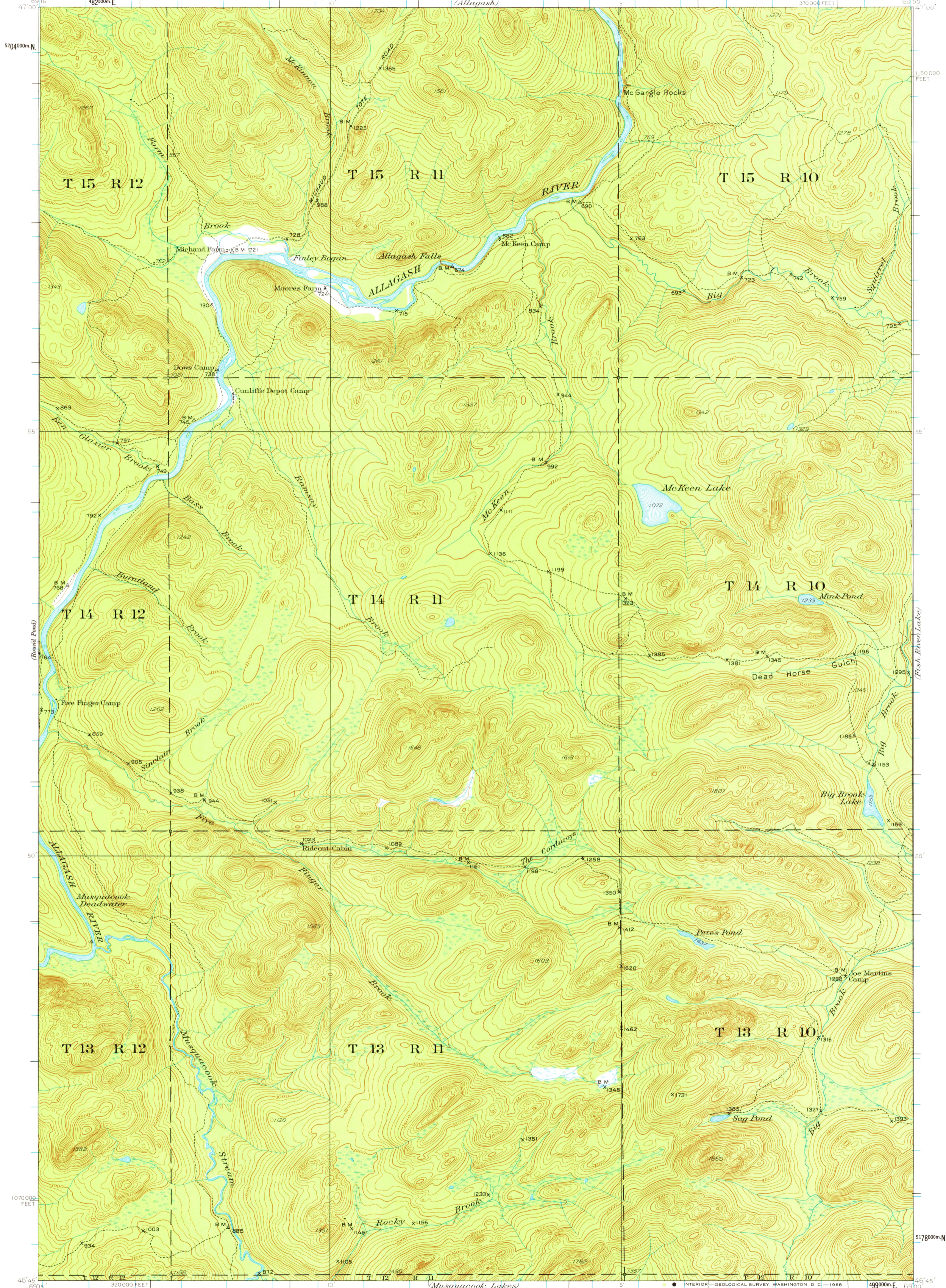


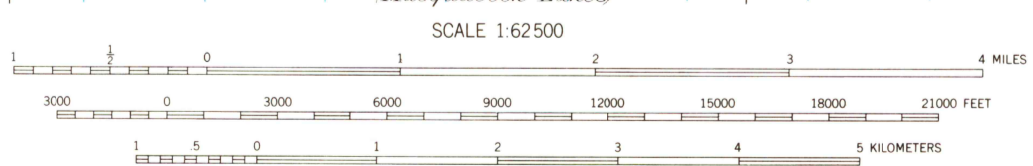
(Rocky Brook)

(St. Francis)



Topography by W.F. Chenault, S.L. Parker,
J.O. Kilmartin, and H.J. McMillen
Control by U.S. Geological Survey
Surveyed in 1931-1932

APPROXIMATE MEAN
DECLINATION, 1932



INTERIOR-GEOLOGICAL SURVEY, WASHINGTON, D. C. 1968
Polyconic projection, 1927 North American datum
10,000-foot grid based on Maine (East)
rectangular coordinate system
1000-meter Universal Transverse Mercator grid ticks
zone 19, shown in blue

ALLAGASH FALLS, ME.
N4645-W6903/15