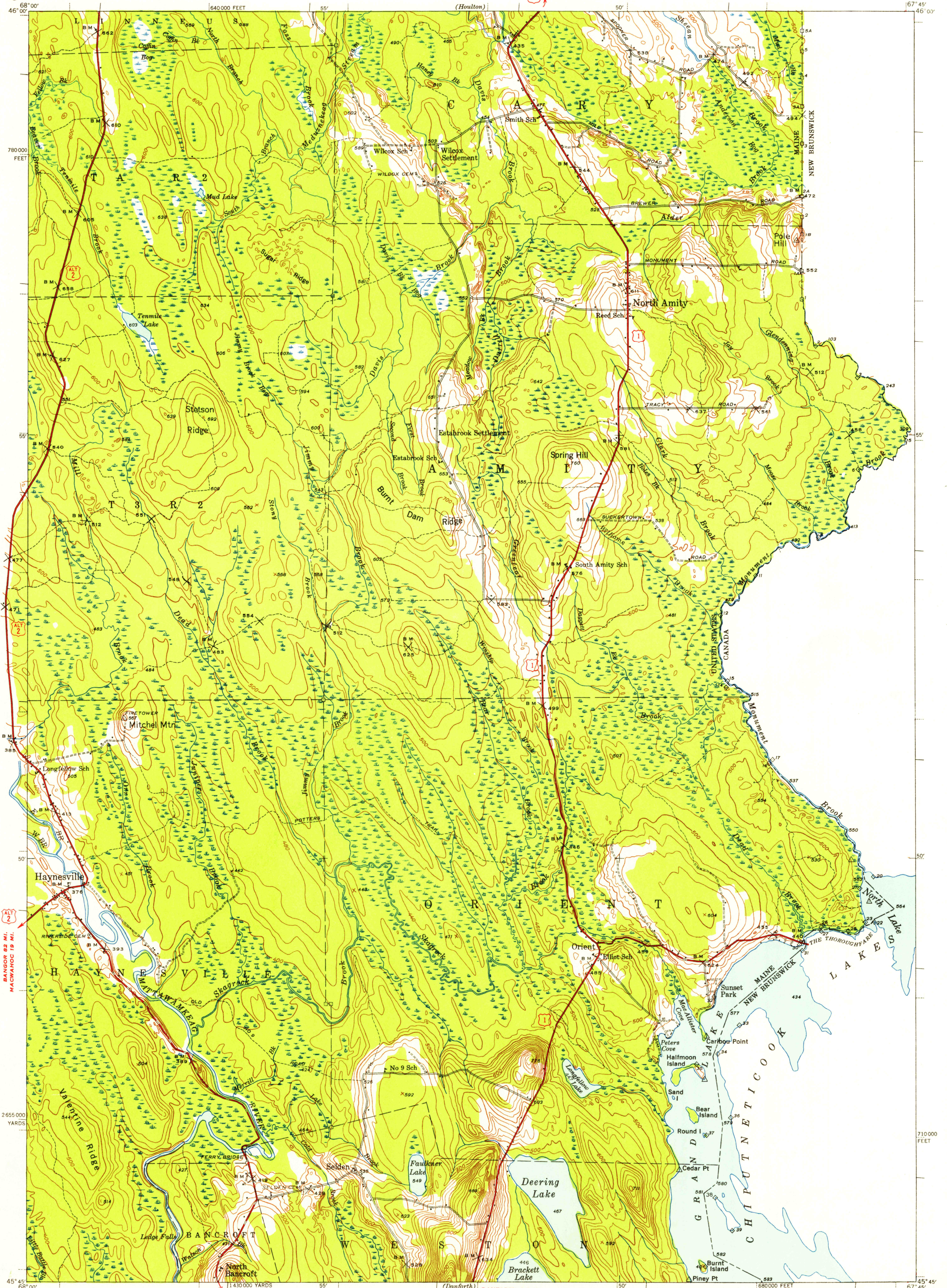


U.S.G.S. FILE COPY TOPOGRAPHIC DIVISION

MAINE (AROOSTOOK COUNTY) AMITY QUADRANGLE 15-MINUTE SERIES

UNITED STATES DEPARTMENT OF THE INTERIOR GEOLOGICAL SURVEY

(Singular Miles)



BANGOR 62 MI. MACAWHOC 19 MI.

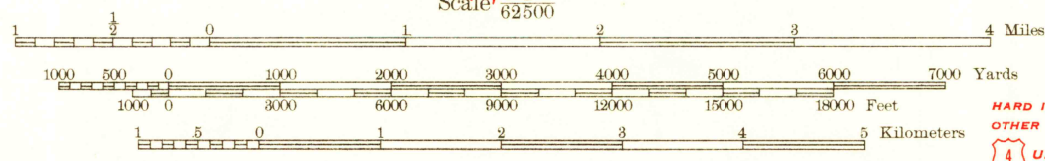
CARIBOU 64 MI. HOULTON 9 MI.

HOULTON 11.5 MI. LINNEUS 3 MI.

DANFORTH 6.5 MI. CALAIS 63 MI.

Topography by H. D. Cummings, Frank E. Patten, L. S. Howe, Jr., and J. I. Brubaker. Surveyed in 1938-39

MAGNETIC NORTH TRUE NORTH 224' APPROXIMATE MEAN DECLINATION, 1939



Polyconic projection. 1927 North American datum. 5000 yard grid based on U. S. zone system, A. 10000 foot grid based on Maine (East) rectangular coordinate system

Contour interval 20 feet Datum is mean sea level

RETURN TO: NHD HISTORICAL MAP ARCHIVES USGS NATIONAL CENTER, MS-522 RESTON, VA 22092

ROUTES USUALLY TRAVELED HARD IMPERVIOUS SURFACES OTHER SURFACE IMPROVEMENTS U.S. ROUTE STATE ROUTE

AMITY, MAINE Edition of 1943 N4545-W6745/15

U.S.G.S. FILE COPY TOPOGRAPHIC DIVISION

JAN 25 1956

1615