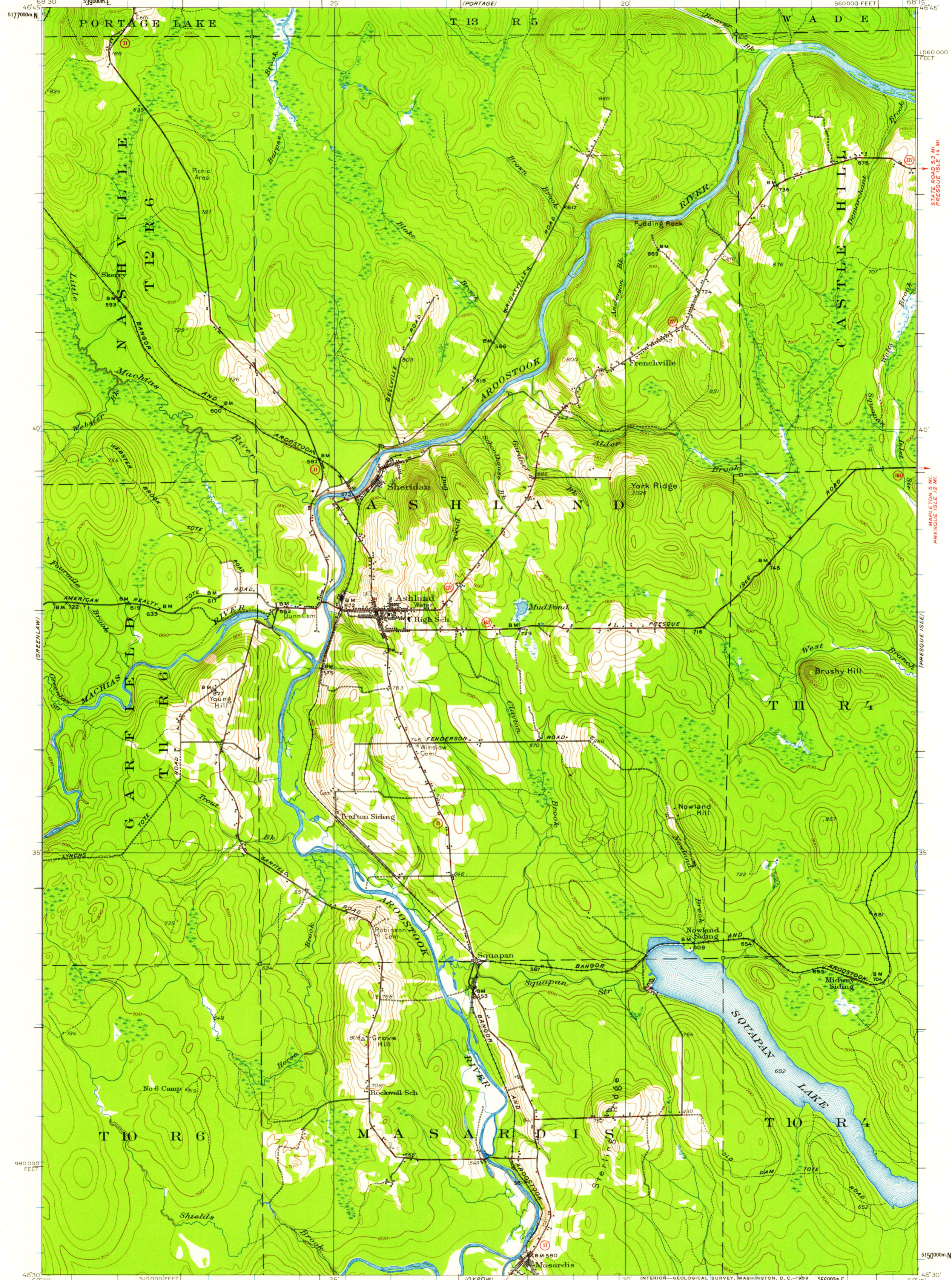
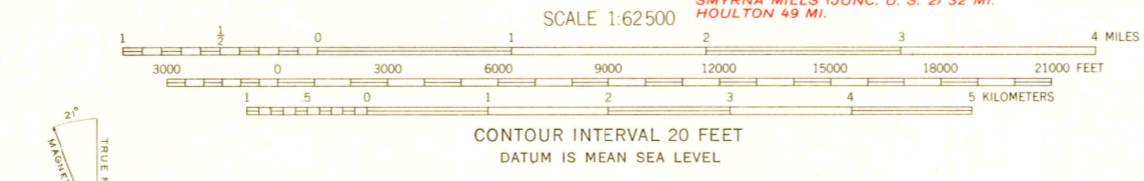


WINTERVILLE
68°30'
46°45'
5177000m N

CARIBOU
68°15'
46°45'



Mapped, edited, and published by the Geological Survey
Control by USGS and USC&GS
Culture and drainage in part compiled from aerial photographs
Topography by plane-table surveys 1930-1931. Revised 1953
Polyconic projection 1927 North American datum
10000-foot grid based on Maine coordinate system,
east zone
1000-meter Universal Transverse Mercator grid ticks,
zone 19, shown in blue



ROAD CLASSIFICATION
Medium-duty ——— Light-duty ———
Unimproved dirt - - - - -
State Route ○

ASHLAND, ME.
N4630-W6815/15
1953

THIS MAP COMPLIES WITH NATIONAL MAP ACCURACY STANDARDS
FOR SALE BY U. S. GEOLOGICAL SURVEY, WASHINGTON 25, D. C.
A FOLDER DESCRIBING TOPOGRAPHIC MAPS AND SYMBOLS IS AVAILABLE ON REQUEST



GRAND LAKE SEBOIS

HOWE BROOK