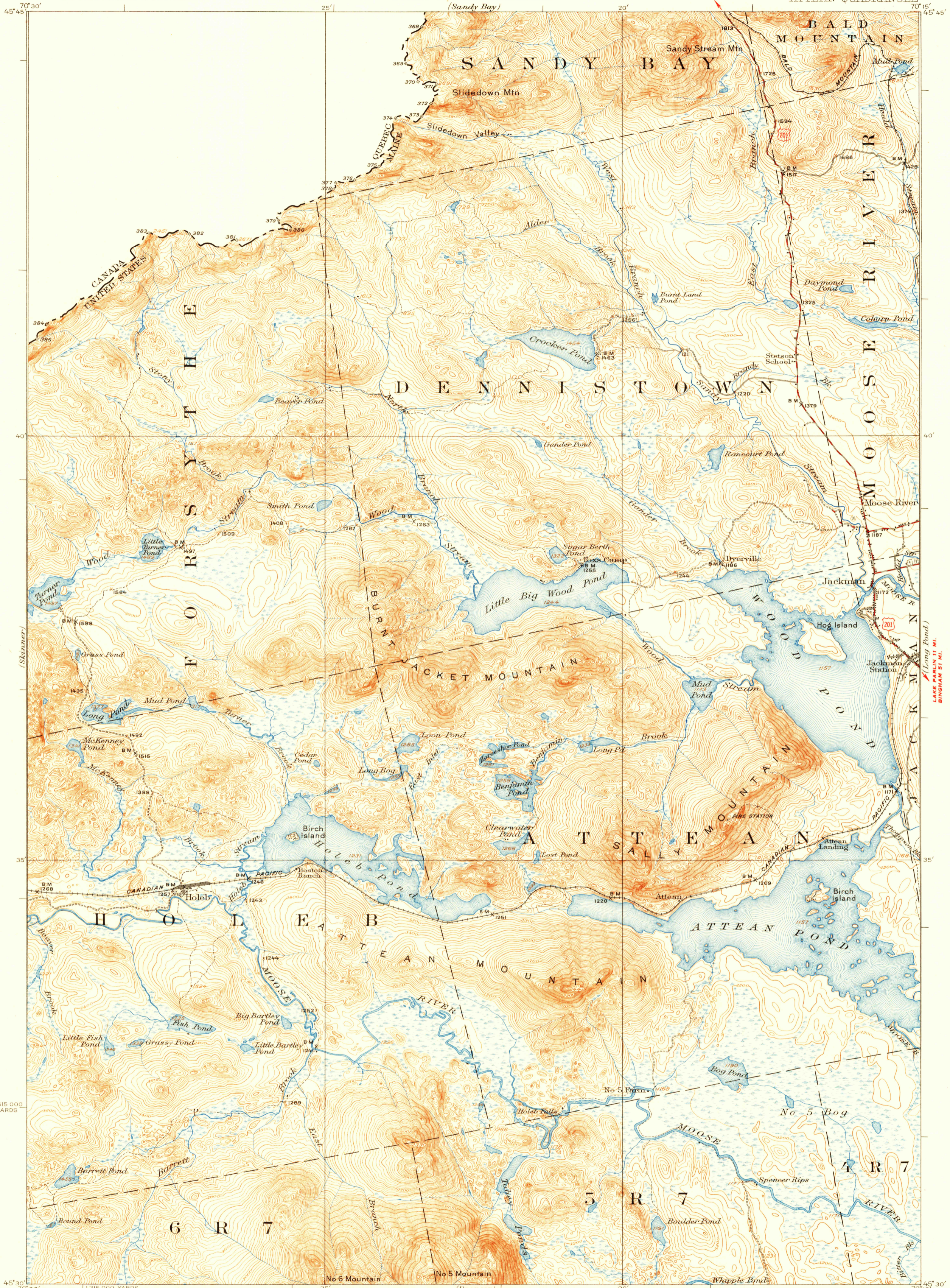


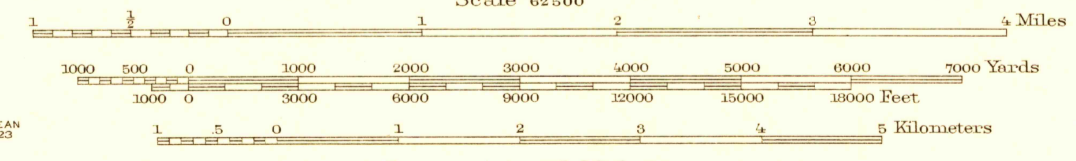
ST. GEORGES DE BEAUCÉ 33 MI.  
INTERNATIONAL BOUNDARY 6.6 MI.



Topography by W.K. McKinley, S.L. Parker, R.J. Belton, H.N. Lary, and International Boundary Commission. Control in part by U.S. Coast and Geodetic Survey, and International Boundary Commission and from railroad valuation surveys. Surveyed in 1923.

**ROAD CLASSIFICATION**  
 HARD-SURFACE ALL WEATHER ROADS    DRY WEATHER ROADS  
 Heavy-duty ——— 4 LANE 1 LANE Improved dirt ———  
 Medium-duty ——— 4 LANE 1 LANE Unimproved dirt ———  
 Loose-surface, graded, or narrow hard-surface - - - - -  
 U. S. Route      State Route

APPROXIMATE MEAN DECLINATION, 1923



U. S. G. S.

Polyconic projection. North American datum. 5000 yard grid based upon U. S. zone system, A.

ATTEAN, ME.  
Edition of 1925  
reprinted 1951  
N4530-W7015/15

269-A  
Duplicate