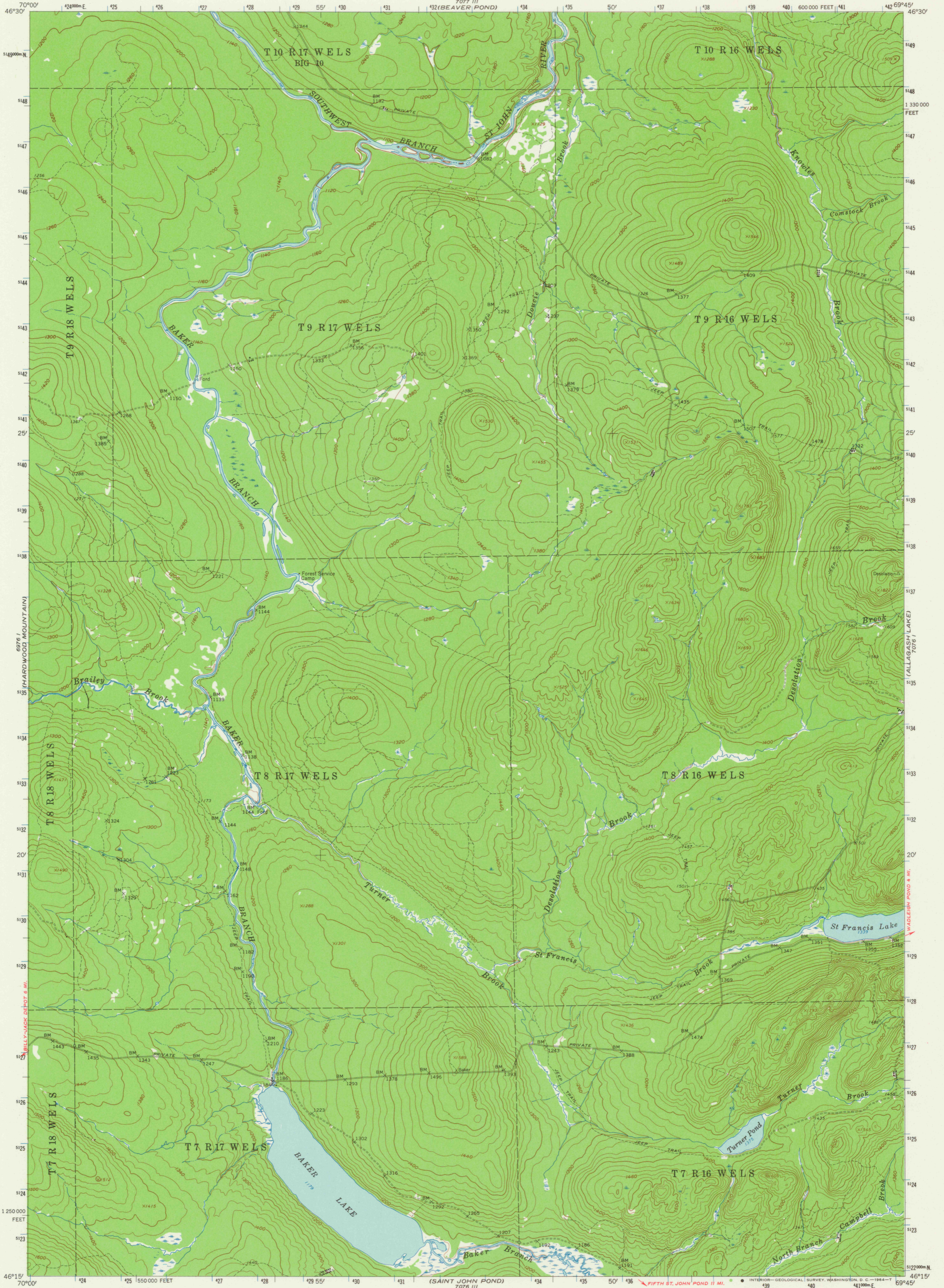


7077 II  
(CLAYTON LAKE)



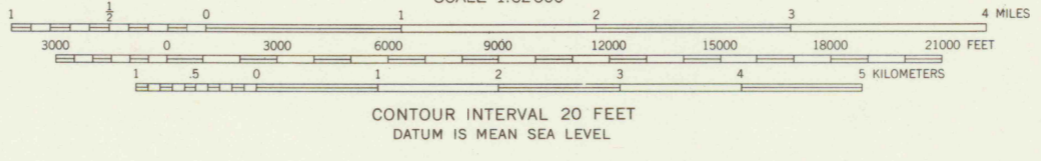
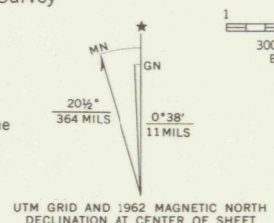
6976 I  
(HARDWOOD MOUNTAIN)

6976 II  
(NORRIS BROOK)

7076 I  
(ALLAGASH LAKE)

7076 II  
(AUCOCHOC LAKE)

Mapped, edited, and published by the Geological Survey  
Control by USGS and USC&GS  
Topography by photogrammetric methods from aerial  
photographs taken 1958 and 1960. Field checked 1962  
Polyconic projection. 1927 North American datum  
10,000-foot grid based on Maine coordinate system, west zone  
1000-meter Universal Transverse Mercator grid ticks,  
zone 19, shown in blue



ROAD CLASSIFICATION  
Light-duty ————— Unimproved dirt - - - - -



THIS MAP COMPLIES WITH NATIONAL MAP ACCURACY STANDARDS  
FOR SALE BY U. S. GEOLOGICAL SURVEY, WASHINGTON 25, D. C.  
A FOLDER DESCRIBING TOPOGRAPHIC MAPS AND SYMBOLS IS AVAILABLE ON REQUEST

BAKER LAKE, MAINE  
N4615—W6945/15  
1962  
AMS 7076 IV—SERIES V711