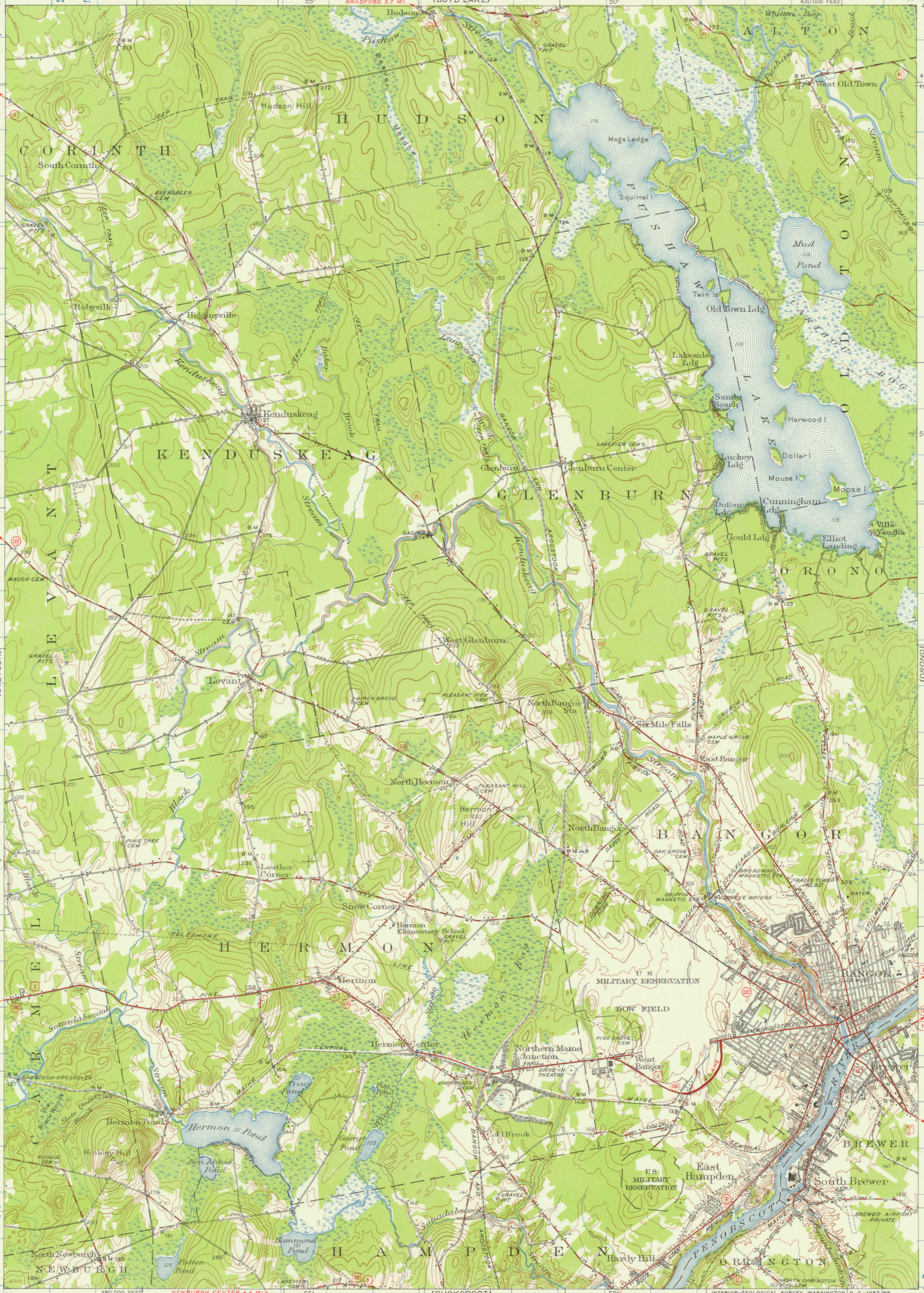
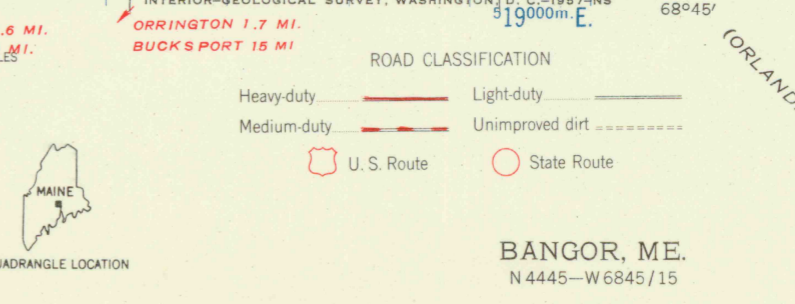
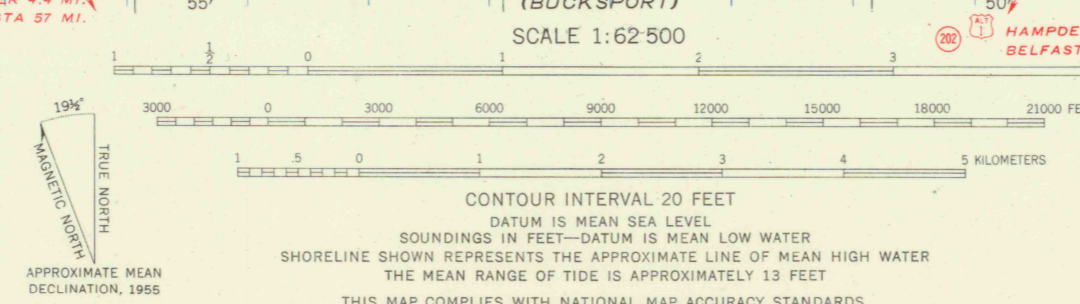


(PASSADUMKEAG)



Mapped, edited, and published by the Geological Survey
Control by USGS and USC&GS
Culture and drainage in part compiled from aerial photographs
taken 1942. Topography by planetable surveys 1944. Revised 1955
Hydrography compiled from USC&GS chart 1227 (1956)
Polyconic projection. 1927 North American datum
10,000-foot grid based on Maine coordinate system, east zone
1,000-meter Universal Transverse Mercator grid ticks,
zone 19, shown in blue
To join Boyd Lake and Stetson maps use dotted projection corners
Red tint indicates area in which only
landmark buildings are shown



FOR SALE BY U.S. GEOLOGICAL SURVEY, WASHINGTON 25, D.C.
A FOLDER DESCRIBING TOPOGRAPHIC MAPS AND SYMBOLS IS AVAILABLE ON REQUEST

BANGOR, ME.
N 4445-W 6845/15
1955