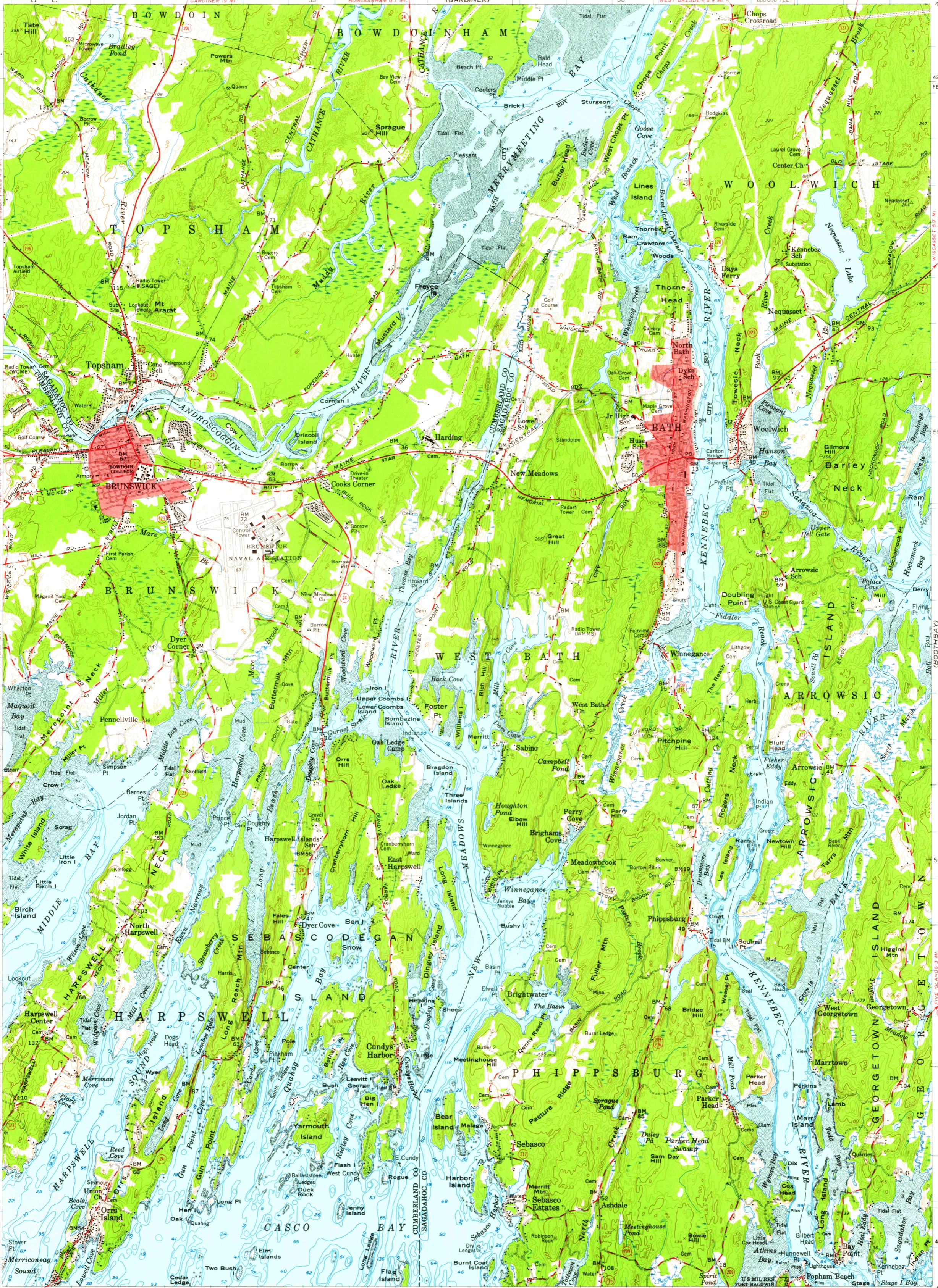
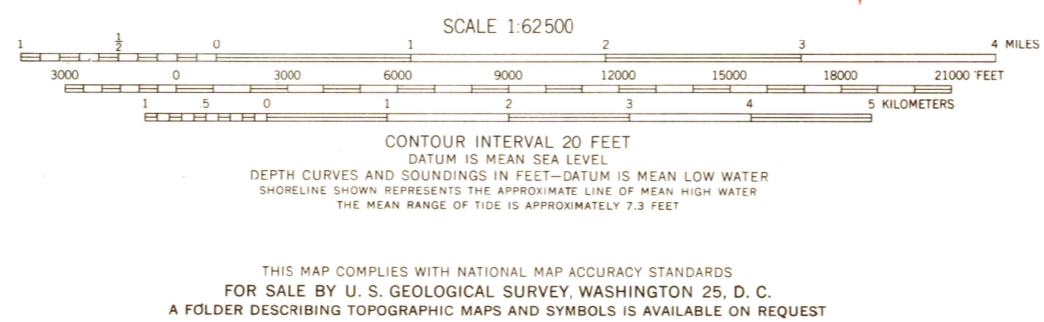


(LEWISTON)  
44°00'  
4871000m N  
70°00'  
421000m E  
AUGUSTA 25 MI.  
GARDINER 9.7 MI.  
RICHMOND 8.8 MI.  
BOWDOINHAM 9.7 MI.  
(GARDINER)  
55°  
50'  
WEST DRESDEN 9.9 MI.  
600 000 FEET  
DRESDEN MILLS 9.2 MI.  
69°45'  
44°00'  
420 000 FEET  
55°  
50'  
(FREEDPORT)  
50'  
340 000 FEET  
70°00'  
439 000 FEET  
SOUTH HARPSWELL 1.5 MI.  
HARPSWELL 1.6 MI.  
BAILEY ISLAND 1.7 MI.  
550 000 FEET  
55°  
50'  
340 000 FEET  
43°45'  
70°00'  
CASCADIA 2.8 MI.  
SOUTH 1.6 MI.  
PORTLAND 25 MI.  
MAINE TURNPIKE 24 MI.  
ROCKLAND 16 MI.  
LEWISTON 16 MI.  
LUDLOW 16 MI.  
MERRIMAN 1.5 MI.  
HARPSWELL 1.6 MI.  
SOUTH HARPSWELL 1.5 MI.  
BAILEY ISLAND 1.7 MI.  
550 000 FEET  
55°  
50'  
340 000 FEET  
43°45'



Mapped by the Geological Survey and the Army Map Service  
Edited and published by the Geological Survey  
Control by USGS, USC&GS, and USCE, and Maine Geodetic Survey  
Topography on north half by planetable surveys 1941  
Revised 1957. South half compiled in 1959 from  
USGS 1:24,000 scale maps of Orrs Island and Phippsburg  
7.5 minute quadrangles, surveyed 1941. Revised 1957  
Hydrography compiled from USC&GS charts 230 (1953),  
238 (1954), 314 and 315 (1955)  
Polyconic projection. 1927 North American datum  
10,000-foot grid based on Maine coordinate system, west zone  
1000-meter Universal Transverse Mercator grid ticks,  
zone 19, shown in blue  
Red tint indicates areas in which only landmark buildings are shown  
Unchecked elevations are shown in brown



ROAD CLASSIFICATION  
Heavy-duty ——— Light-duty ———  
Medium-duty ——— Unimproved dirt ———  
Interstate Route U.S. Route State Route  
U.S.G.S. THE SOUTH HALF OF THIS AREA ALSO COVERED  
BY 1:24,000 SCALE MAPS OF ORRS ISLAND AND  
PHIPPSBURG 7.5 MINUTE QUADRANGLES, SURVEYED 1941  
BATH, MAINE  
N4345-W6945/15  
1957

AUG 14 1953  
6280