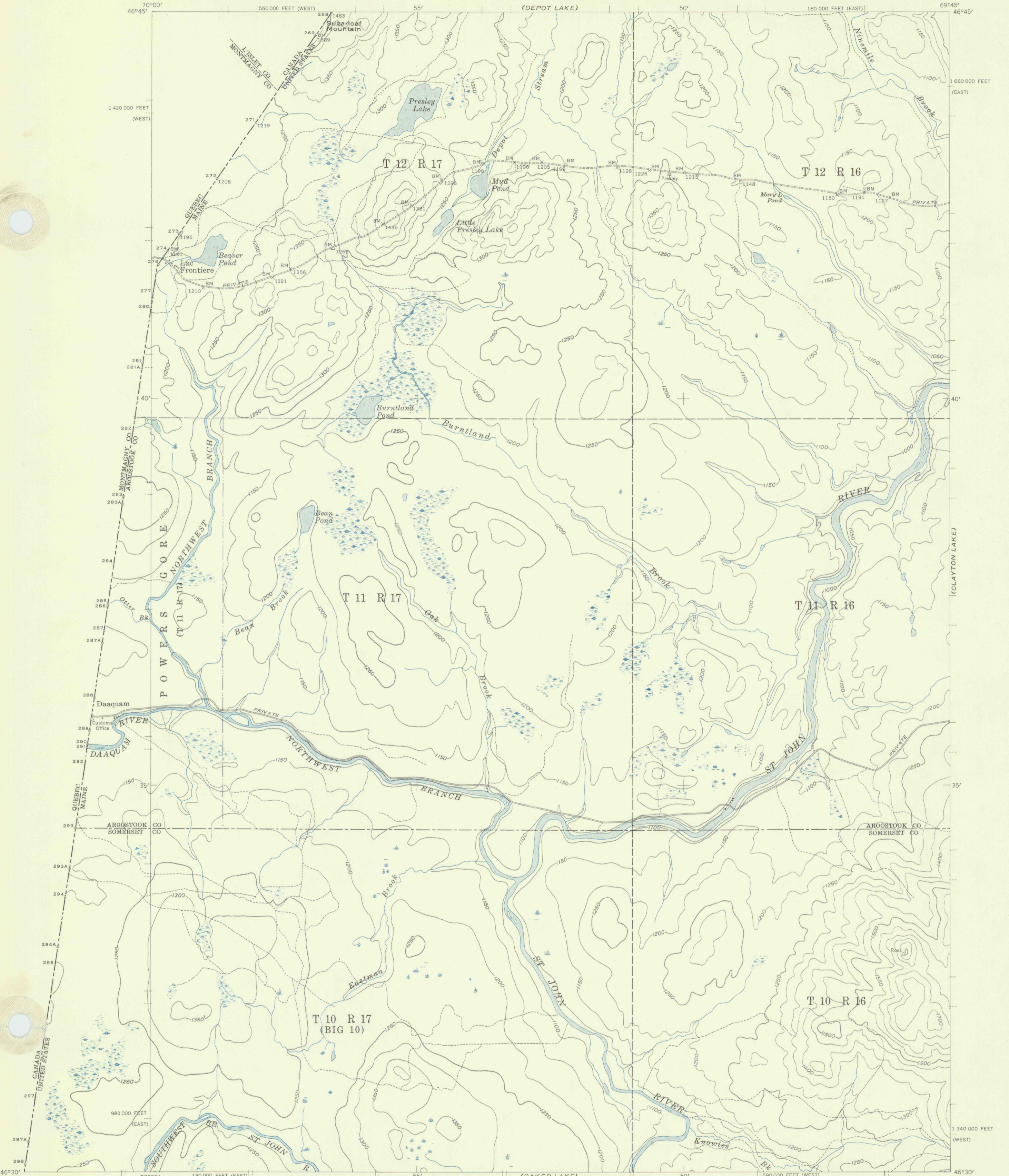
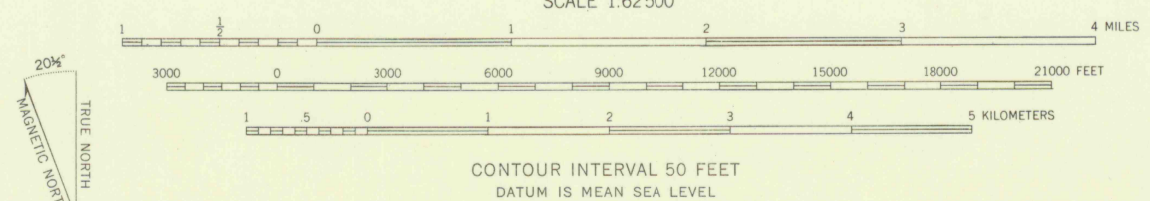


(SEVEN ISLANDS)



Mapped by the Army Map Service
Edited and published for civil use
by the Geological Survey
Control by USGS, USC&GS, International Boundary
Commission, and the Geodetic Survey of Canada
Topography from aerial photographs by multiplex methods for
the 1:250 000 scale publication. Aerial photographs taken 1951
and 1952. Map field checked by the Geological Survey 1955
Polyconic projection. 1927 North American datum
10,000-foot grids based on Maine coordinate system,
east and west zones



ROAD CLASSIFICATION
Improved
Unimproved
Trail



BEAVER POND, ME.
N 4630 - W 6945 / 15