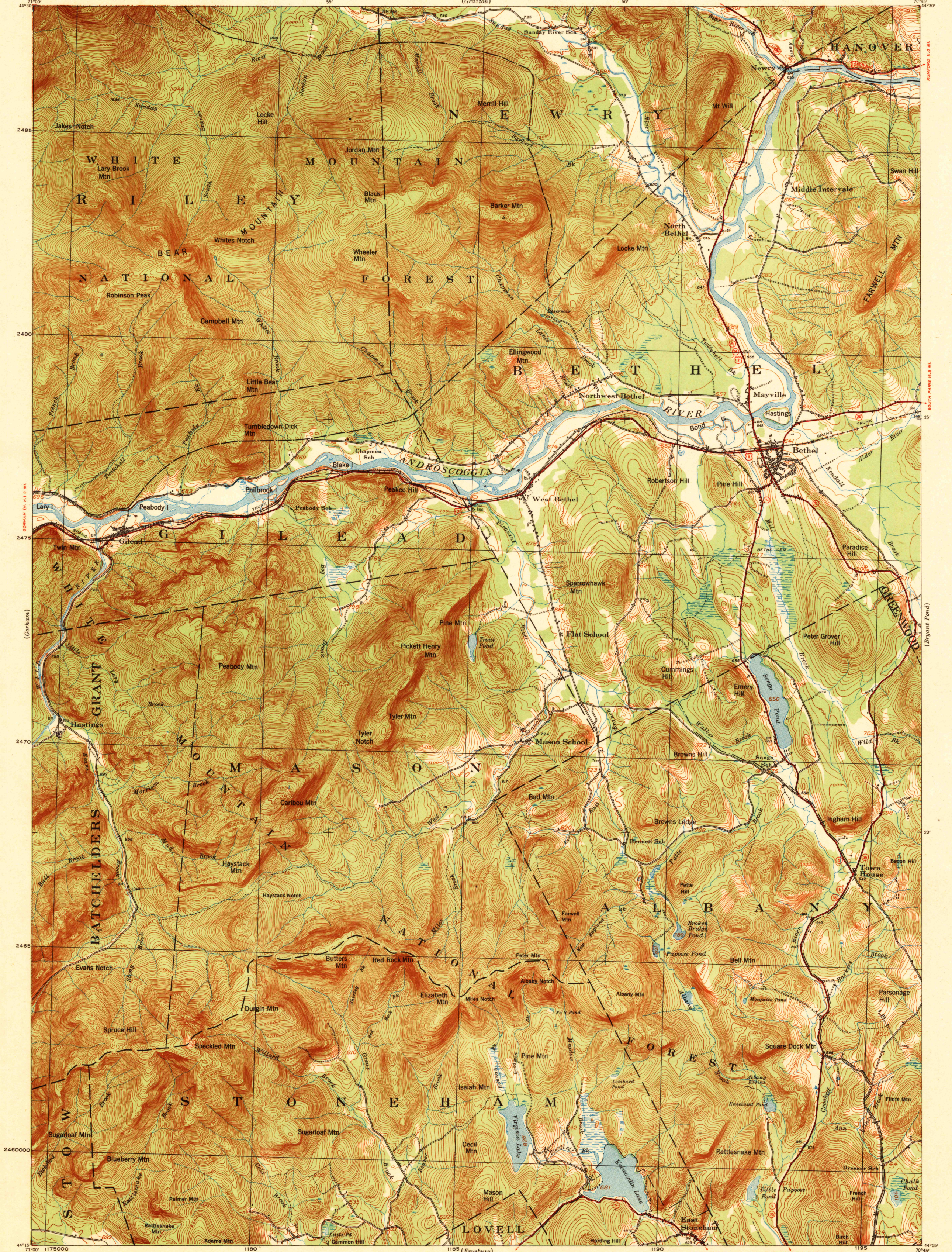
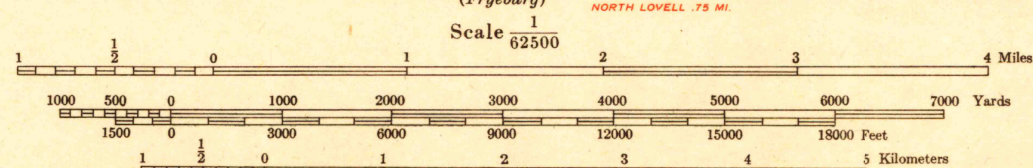


Advance sheet
Subject to correction



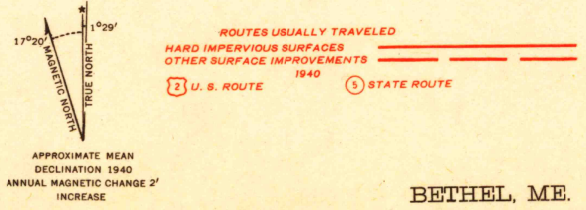
Prepared under the direction of the Engineer, First Corps Area, by the Work Projects Administration, 1940. Horizontal and vertical control by U. S. Geological Survey. Topography, culture and drainage in part revised by the Engineer, First Corps Area, from aerial photographs taken 1940 by Flight "B", 1st Photographic Squadron, Air Corps, U. S. Army. Polyconic Projection, North American Datum.



Contour interval 20 feet
Datum is mean sea level

FIVE THOUSAND YARD GRID COMPUTED FROM "GRID SYSTEM FOR PROGRESSIVE MAPS IN THE U. S." ZONE A, U. S. G. S. SPECIAL PUBLICATION NO. 59 (THE LAST THREE DIGITS OF THE GRID NUMBERS ARE OMITTED)

NOTE: OFFICERS USING THIS MAP WILL WANT TO BE AWARE OF THE CORRECTIONS AND AMENDMENTS WHICH COME TO THEIR ATTENTION AND WILL DIRECT TO THE CHIEF OF ENGINEERS, WASHINGTON, D. C.



APPROXIMATE MEAN DECLINATION 1940 ANNUAL MAGNETIC CHANGE 7 INCREASE

BETHEL, ME.
N4415-W7045/15

USCS
Historical File
Topographic Division

FILE COPY
Inspection and Kitings