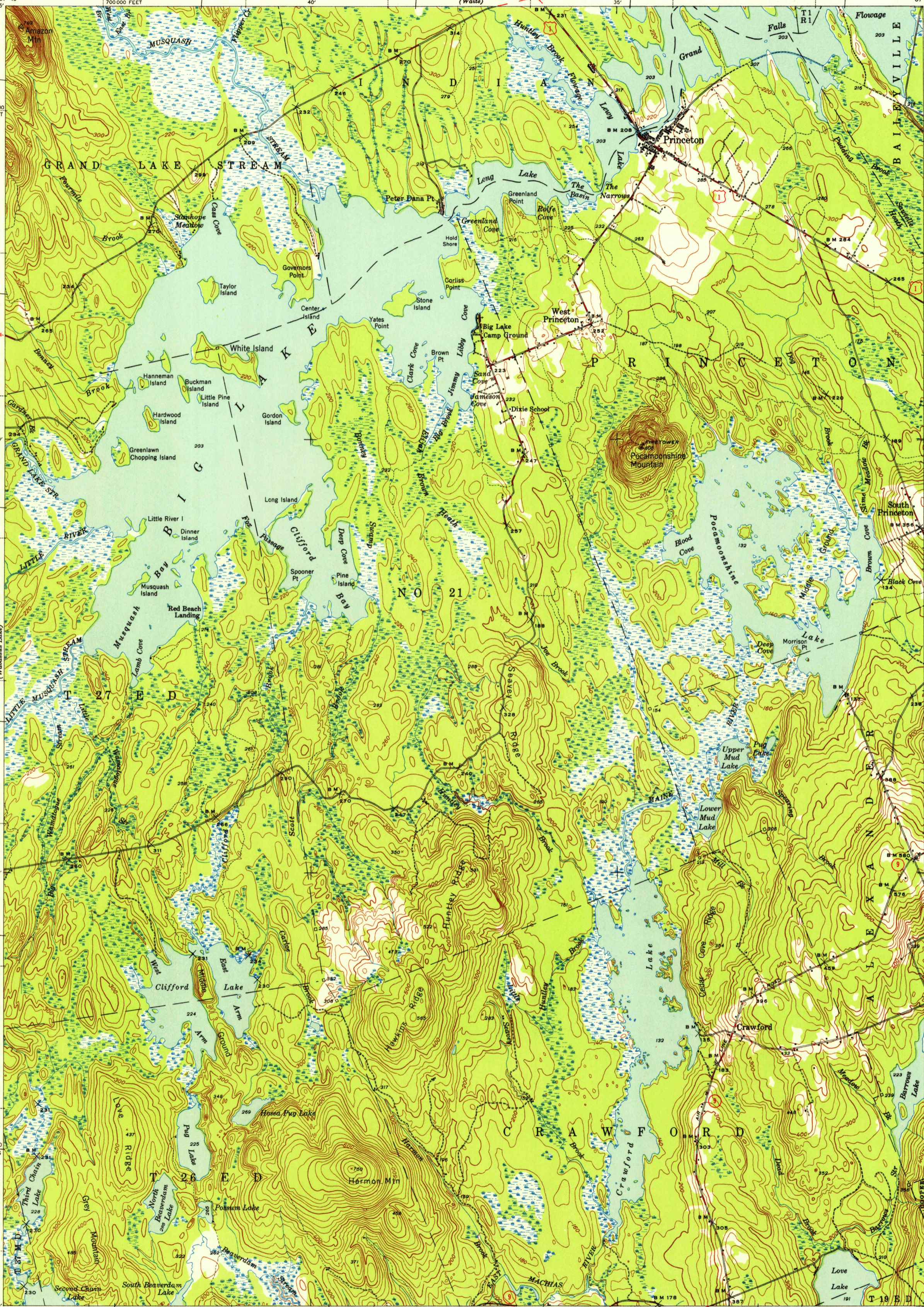


U.S.G.S.
FILE COPY
TOPOGRAPHIC DIVISION



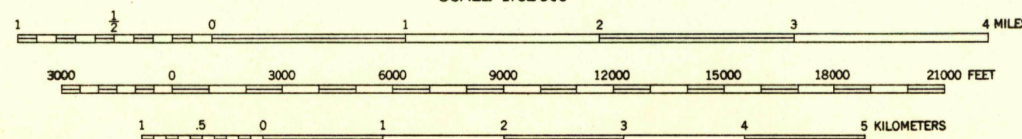
Topography by W. C. Thompson, J. A. McKeon, Lindsay Arthur, R. G. Carpenter, Ray Redfearn, and J. H. Drake
Surveyed in 1941

SCALE 1:62500

Polyconic projection. 1927 North American datum
5000 yard grid based on U. S. zone system, A
10000 foot grid based on Maine (East)
rectangular coordinate system

ROAD CLASSIFICATION
HARD-SURFACE ALL WEATHER ROADS DRY WEATHER ROADS
Heavy-duty GRAVEL SLANE Improved dirt
Medium-duty Unimproved dirt
Loose-surface or narrow hard-surface
① U. S. Route ② State Route

TRUE NORTH
MAGNETIC NORTH
APPROXIMATE MEAN DECLINATION, 1941



Contour interval 20 feet
Datum is mean sea level

BIG LAKE, ME.
Edition of 1943
reprinted 1948
N4500-W6730/15

To join Calais map use dotted
projection corners

USGS
Historical File
Topographic Division

MAR 22 1955

3595