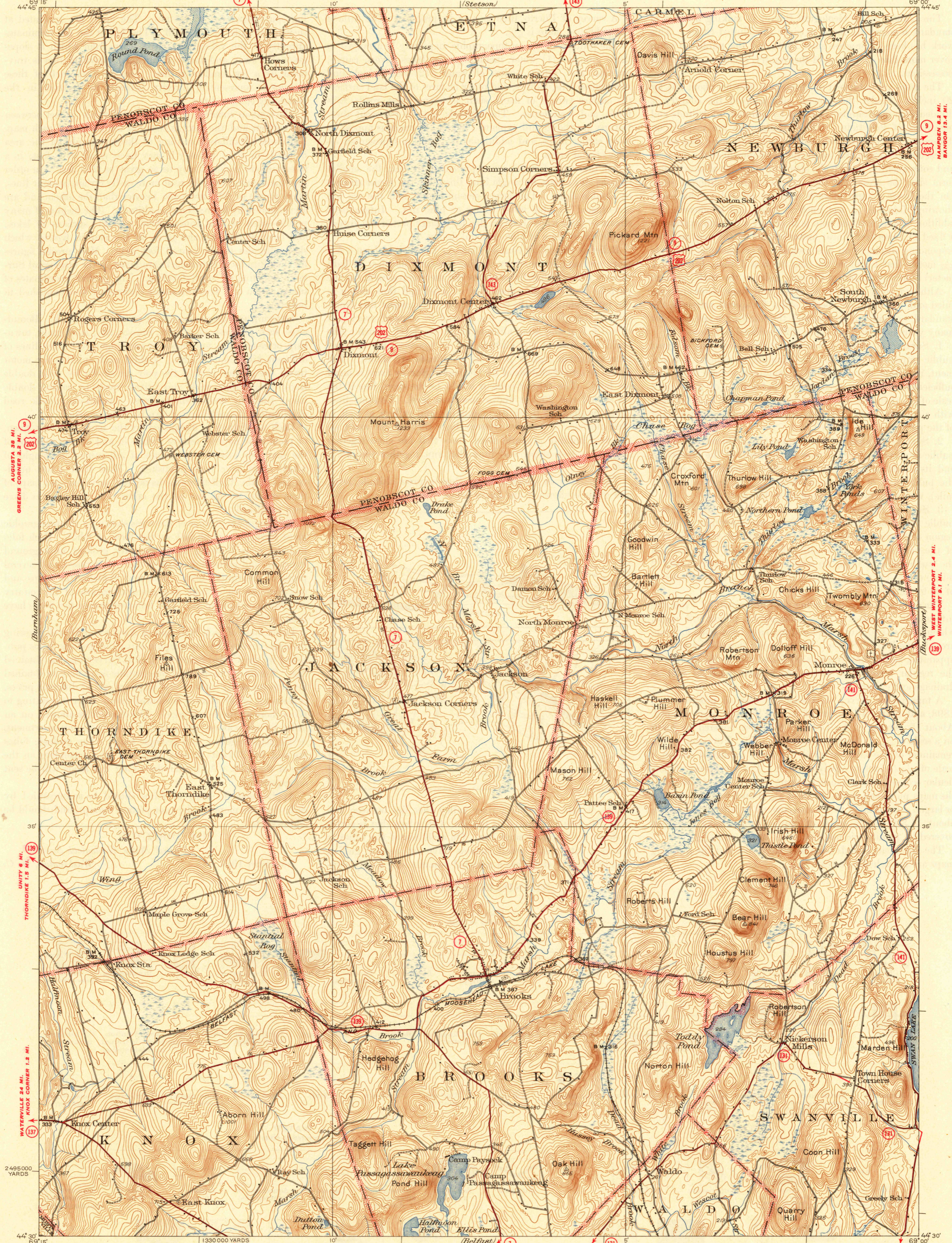


U. S. G. S.
FILE COPY
Inspection and Editing.

UNITED STATES
DEPARTMENT OF THE INTERIOR
GEOLOGICAL SURVEY

STATE OF MAINE
REPRESENTED BY THE
PUBLIC UTILITIES COMMISSION

MAINE
BROOKS QUADRANGLE

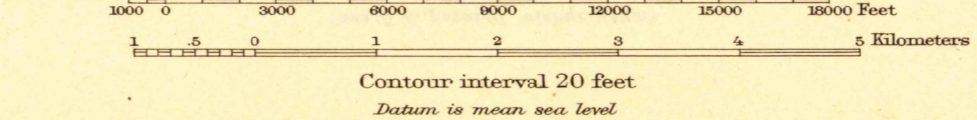


44° 45' 69° 15'
44° 40' 69° 15'
44° 35' 69° 15'
44° 30' 69° 15'
44° 25' 69° 15'
44° 20' 69° 15'
44° 15' 69° 15'

69° 00' 44° 45'
69° 00' 44° 45'
69° 00' 44° 45'
69° 00' 44° 45'
69° 00' 44° 45'
69° 00' 44° 45'
69° 00' 44° 45'

Topography by W. F. Chenault, E. V. Holloway,
J. P. Rydeen, and L. H. Caldwell
Control by U.S. Geological Survey and
U.S. Coast and Geodetic Survey
Surveyed in 1929

KENDALLS CORNER 6.7 MI.
BELFAST 11 MI.
KENDALLS CORNER 8.5 MI.
BELFAST 9.8 MI. Scale 42500
MORRILL 5.7 MI.
BELMONT 8.5 MI.



Polyconic projection, North American datum
5000 yard grid based upon U. S. zone system, A
SHERMANS CORNER 3 MI.
BELFAST 5.1 MI.

ROUTES USUALLY TRAVELED
HARD IMPROVED SURFACES
OTHER SURFACE IMPROVEMENTS
U. S. ROUTE 1944
STATE ROUTE

BROOKS ME
Edition of 1932
reprinted 1945
14-430-W 6900/15

USGS
Historical File
Topographic Division

U. S. G. S.
FILE COPY