

TOPOGRAPHY

STATE OF MAINE

FREDERICK W. PLAISTED, GOVERNOR

F. E. MACE, EDWARD P. RICKER, J. M. McNULIFY, E. C. JORDAN

STATE WATER STORAGE COMMISSION

CYRUS C. BABB, CHIEF ENGINEER

U.S. GEOLOGICAL SURVEY
GEORGE OTIS SMITH
DIRECTOR

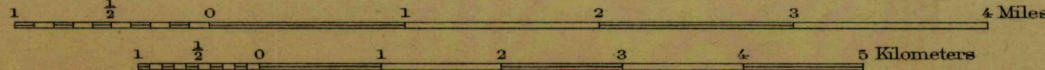
MAINE
(OXFORD COUNTY)
BRYANT POND QUADRANGLE



ENGRAVED MAR. 1913 BY U.S.G.S.

(Norway)

Scale 62500



Contour interval 20 feet.

Datum is mean sea level.

Edition of Feb. 1914.

R. B. Marshall, Chief Geographer.
Frank Sutton, Geographer in charge.
Topography by Hersey Munroe and R. A. Kiger.
Control by E. L. McNair and Kenneth F. Maxcy.
Surveyed in 1911.

Kiger
Munroe

SURVEYED IN COOPERATION WITH THE STATE OF MAINE.

BRYANT POND