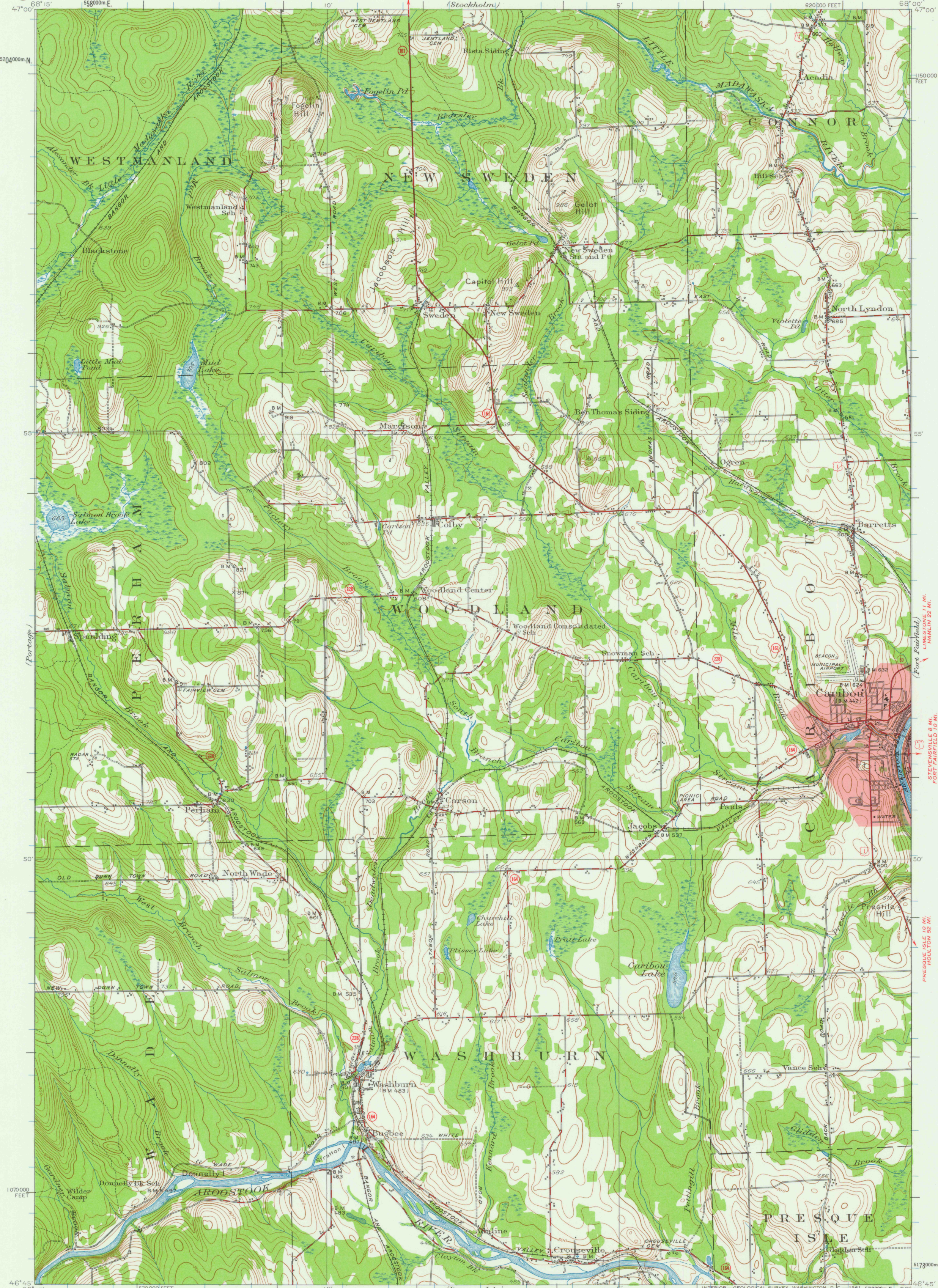


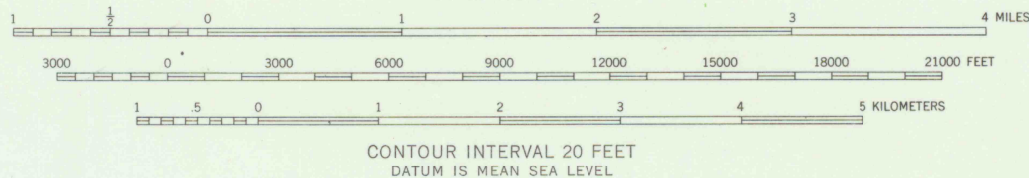
UNITED STATES
DEPARTMENT OF THE INTERIOR
GEOLOGICAL SURVEY

STATE OF MAINE
REPRESENTED BY THE
PUBLIC UTILITIES COMMISSION
(Stockholm)

CARIBOU QUADRANGLE
MAINE—AROOSTOOK CO.
15 MINUTE SERIES (TOPOGRAPHIC)



Mapped, edited, and published by the Geological Survey
Control by USGS and USC&GS
Culture and drainage in part compiled from aerial photographs
Topography by planetable surveys 1929. Revised 1953
Polyconic projection. 1927 North American datum
10,000-foot grid based on Maine coordinate system,
east zone
1000-meter Universal Transverse Mercator grid ticks,
zone 19, shown in blue
Red tint indicates area in which
only landmark buildings are shown



ROAD CLASSIFICATION

Heavy-duty ——— Light-duty ———
Medium-duty ——— Unimproved dirt ———
U.S. Route ——— Slate Route ———



CARIBOU, ME.
N 4645—W 6800/15

1953

FOR SALE BY U.S. GEOLOGICAL SURVEY, WASHINGTON 25, D. C.
A FOLDER DESCRIBING TOPOGRAPHIC MAPS AND SYMBOLS IS AVAILABLE ON REQUEST